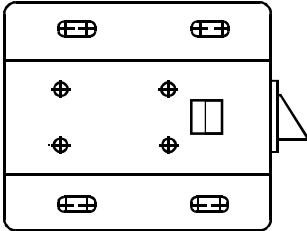
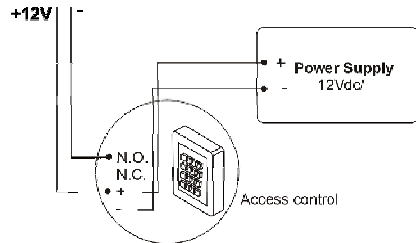


CABINETLOCK11

Cabinet Lock Dead Bolt



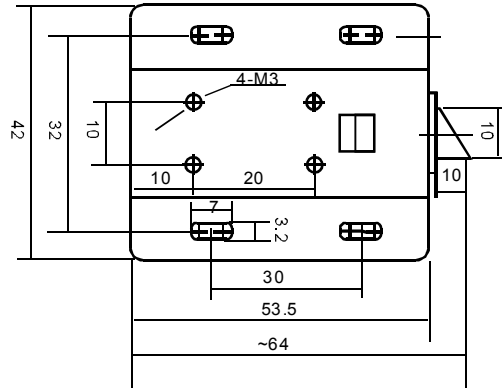
Wiring Diagram:



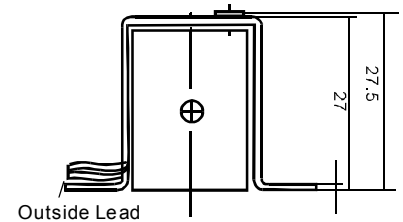
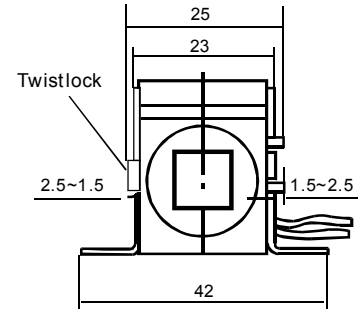
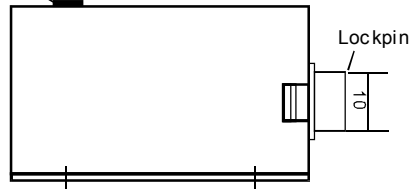
SPECIFICATION

Working Voltage: DC 12V
 Working Current: 0.6A
 Length Extension of Lockpin: 10MM
 Weight: 0.16KG
 Dimension: 55x43x28MM
 2.2" x 1.7" x 1.1" (inches)
 FEATURE: Fail Secure (NO)

Installation Diagram of Cabinet Lock



Bolt



Mouser Electronics

Authorized Distributor

Click to View Pricing, Inventory, Delivery & Lifecycle Information:

[SparkFun Electronics:](#)

[ROB-15324](#)