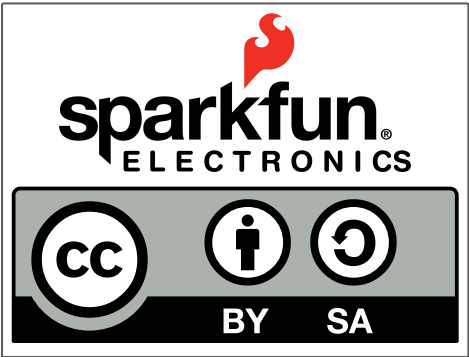
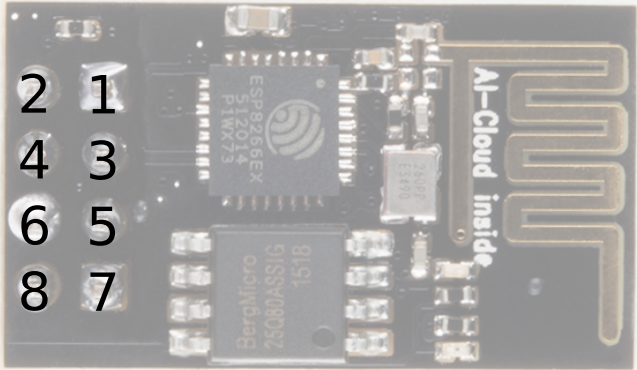


# ESP8266 Module (WRL-13678)



|    |        |             |          |
|----|--------|-------------|----------|
| D7 | GPIO1  | TX          | 2- TXO   |
|    |        | Chip Enable | 4- CHPD  |
|    |        | Reset       | 6- RST   |
|    |        | 3.3V        | 8- 3V    |
|    |        | GND         | 1- GND   |
|    | D2/SDA | GPIO2       | 3- GPIO2 |
|    | DO     | GPIO0       | 5- GPIO0 |
| D8 | GPIO3  | RX          | 7- RXI   |



PCB Antenna

**Power**  
VCC-3.0-3.6V  
Standby ~ 0.9uA  
Running ~60-215mA,  
Average ~ 80mA

**Wifi Features**  
802.11 b/g/n  
2.4GHz  
WPA/WPA2  
Wifi Direct

+20dBm output power (802.11b)

**I/O Features**  
Integrated TCP/IP  
Integrated TR switch, LNA,  
balun

**Memory/Speed Features**  
80MHz  
64KB instruction RAM  
96KB data RAM  
64K boot ROM  
1MB\* Flash Memory

**Basic Connection**  
VCC - 3.3V  
GND - GND  
TX - RX on Arduino or FTDI  
RX - TX on ARduino or FTDI  
Chip Enable - 3.3V

**Default Baud Rate**  
11520\* 8N1

**LEDs**  
Red: Power  
Blue: TX

\*milage may vary on different  
version of the board

**AT Command Usage**  
Commands are case sensitive and should end with /r/n  
  
Commands may use 1 or more of these types  
Set = AT+<x>=<...> - Sets the value  
Inquiry = AT+<x>? - See what the value is set at  
Test = AT+<x>=? - See the possible options  
Execute = AT+<x> - Execute a command  
  
Commands with \* have been depreciated in favor of  
COMMAND\_CUR and COMMAND\_DEF. CUR will not write the  
value to flash, DEF will write the valueto flash and be usedas the  
default in the future.

**AT Command List**  
  
AT - Attention  
AT+RST - Reset the board  
AT+CMR - Firmware version  
AT+CWMODE\* - Operating Mode  
1. Client  
2. Access Point  
3. Client and Access Point  
AT+CWJAP\*=<ssid>,<pwd> - Join network  
AT+CWLAP - View available networks  
AT+CWQAP - Disconnect from network  
AT+CWSAP\*=<ssid>,<pwd>,<chl>,<ecn> - Set up access point  
0. Open. No security  
1. WEP  
2. WPA\_PSK  
3. WPA2\_PSK  
4. WPA\_WPA2\_PSK  
AT+CWLIF - Show assigned IP addresses as access point  
AT+CIPSTATUS - Show current status as socket client or server  
AT+CIPSTART=<type>,<addr>,<port> - Connect to socket server  
IP is fixed at 192.168.4.1, mask is fixed at 255.255.255.0  
if CIPMUX is set to multichannel add <id> to beginning of string  
AT+CIPCLOSE - Close socket connection  
AT+CIFSR - Show assigned IP address when connected to network  
AT+CIPMUX=<mode> - Set connection  
0. Single Connection  
1. Multi-Channel Connection  
AT+CIPSERVER=<mode>[,<port>](AT+CIPMUX=1) - Default port is 333  
0. Close the Socket Server  
1. Open the Socket Server  
AT+CIPMODE=<mode> - Set transparent mode  
Data received will be sent to serial port as  
0. +IPD,<connection channel>,<length>format (AT+CIPMUX=[0,1])  
1. Data stream (AT+CIPMUX=0)  
AT+CIPSTO=<time> - Set auto socket client disconnect timeout  
from 1-28800s  
  
Example commands  
AT+CWMODE=? //View options for mode (test)  
AT+CWMODE=3 //Set mode to client and access modes (set)  
AT+CWLAP //View available networks (execute)  
AT+CWJAP = "ssid","password" //Join network (set)  
AT+CWJAP? //View the current network (inquiry)  
AT+CIFSR //Show IP address (execute)  
AT+CWQAP //Disconnect from network (execute)  
AT+CWSAP="apoint","pass",11,0//Setup an open access point (set)  
AT+CWLIF //Show devices connected to access point

# Mouser Electronics

Authorized Distributor

Click to View Pricing, Inventory, Delivery & Lifecycle Information:

[SparkFun Electronics:](#)

[WRL-13678](#)