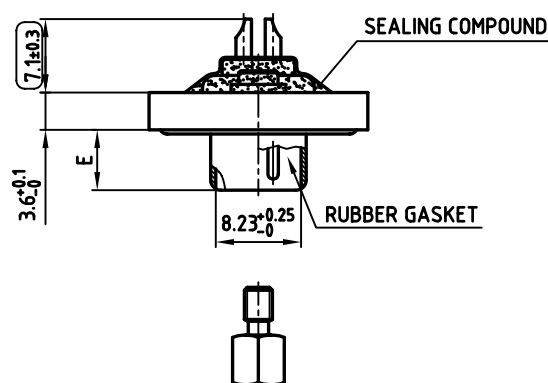
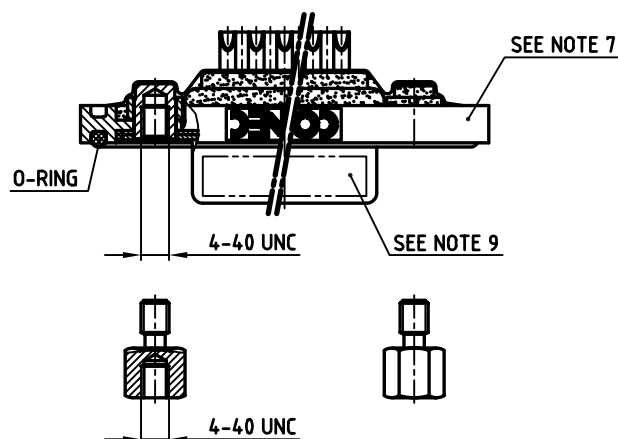
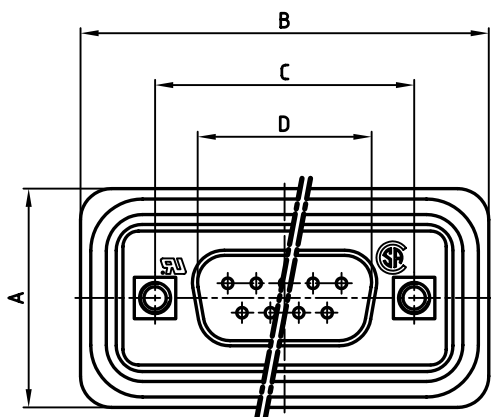


AT ALL TIMES WATER RESISTANT CONNECTORS NOT IN USE SHOULD BE COVERED WITH A CONEC WATER RESISTANT CAP OR WATER TIGHT HOOD.

used for: D-SUB

POS.	A ^{+0.2}	B ^{+0.2}	C	D ^{+0.25}	E ^{-0.30}	Part-NO.
9	21.1	39.4	25.00 ^{+0.12} _{-0.13}	16.79	5.82	6STD09PCM99B30X
15	21.1	47.7	33.30 ^{+0.15} _{-0.1}	25.12	5.82	6STD15PCM99B30X
25	21.1	61.4	47.04 ^{+0.13}	38.84	5.69	6STD25PCM99B30X
37	21.1	77.9	63.50 ^{+0.13}	55.30	5.69	6STD37PCM99B30X



NOTES:



- METAL SHELLS: COPPER ALLOY; min. 320µ" TIN
- INSULATORS: PBT GF UL 94 V-0, BLACK
- CONTACTS: COPPER ALLOY
PLATING: 30µ" HARD GOLD OVER min. 50µ" NICKEL
SOLDER CUP ACCEPTS CABLE AWG 20
- THREADED INSERT: COPPER ALLOY; min. 200µ" TIN over 80µ" NICKEL
- COLLAR: COPPER ALLOY; min. 200µ" TIN over 80µ" NICKEL
- HEXLOCKING SCREW: STAINLESS STEEL
- FRAME: ZINC DIECAST; NICKEL PLATED
- MAXIMUM TORQUE VALUE FOR THREAD: 6" LBS
- CONNECTOR IS PART MARKED: PART-NO. CONEC ABC
- = CHECK DIMENSION

Directive 2002/95/EC
"RoHS"
Compliant

APPROVAL * FREIGABE * DEBLOCAGE * AUTORIZACION * APPROVAL	
CUSTOMER APPROVAL DATE:	
NAME:	TITLE:
COMPANY NAME:	
APPROVAL * FREIGABE * DEBLOCAGE * AUTORIZACION * APPROVAL	

THIS DRAWING MAY NOT BE COPIED OR REPRODUCED IN ANY WAY, AND MAY NOT BE PASSED ON TO A THIRD PARTY WITHOUT WRITTEN PERMISSION.
OWNERSHIP AND COPYRIGHT OF CONEC GmbH
DO NOT ALTER CAD DRAWING BY HAND

rev.	description	date	name

tolerance		scale: 2:1
dim. in mm		material: SEE NOTES
2005	date	name
drawn	25.07.	Lehmenkühler
appd.	25.07.	Mickenbecker
norm	DIN 41652	
d-old		
		

title:	
D-SUB MALE 9-37pos. SOLDER CUP with threaded insert and hexlocking screw	
dwg no:	AutoCAD 2004 DIN-A
18K1A372	3 sh: 1/1
part no: SEE TABLE	

Mouser Electronics

Authorized Distributor

Click to View Pricing, Inventory, Delivery & Lifecycle Information:

CONEC:

[6STD09PCM99B30X](#) [6STD15PCM99B30X](#)