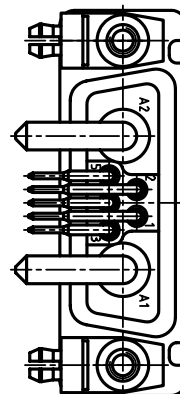
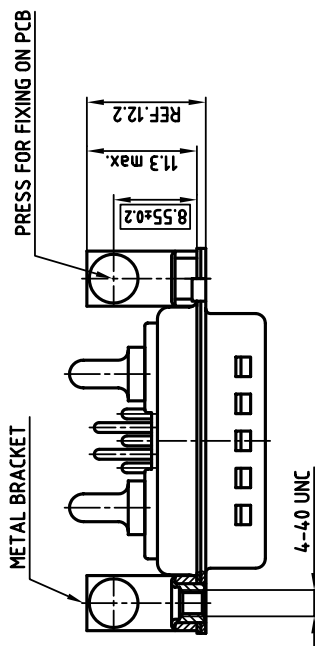
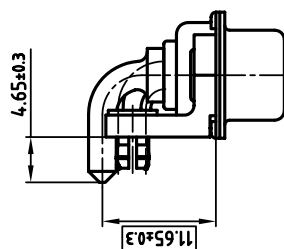




NOTES:

1. METAL SHELLS: STEEL; min. 320µ" TIN over 80µ" NICKEL
2. INSULATORS: PBT GF UL 94 V-0, GREEN
3. CONTACTS: COPPER ALLOY
4. PLATING: min. 30µ" HARD GOLD OVER min. 50µ" NICKEL
5. HIGH POWER CONTACTS 20A: COPPER ALLOY
6. PLATING: min. 30µ" HARD GOLD OVER min. 50µ" NICKEL
7. METAL BRACKET: STEEL; min. 320µ" TIN over 80µ" NICKEL
8. THREADED INSERT: COPPER ALLOY; min. 200µ" TIN over 80µ" NICKEL
9. PCB-SNAP: COPPER ALLOY; min. 200µ" TIN over 80µ" NICKEL
10. MAXIMUM TORQUE VALUE FOR THREAD: 6" LBS
11. = CRITICAL DIMENSION: SPC



THIS DRAWING MAY NOT BE COPIED OR
REPRODUCED IN ANY WAY, AND MAY NOT
BE PASSED ON TO A THIRD PARTY WITHOUT
WRITTEN PERMISSION.
OWNERSHIP AND COPYRIGHT OF CONEC GmbH
DO NOT ALTER CAD DRAWING BY HAND

[illegible]

tolerance		
	drawn	name
	2000	15.09.
	date	Pareil
	appd.	E. Mickenbecker
	15.09.	
norm		
e-aid		
		

scale:	2:1 (5:1)
material:	SEE NOTES
title: D-SUB COMBINATION MALE 90° 7W2P with threaded insert, metal bracket and clip	
dwg no:	AutoCAD 2000
	DIN-A 3 sh: 1/1
product no: 3007W2PCT56N40X	

Mouser Electronics

Authorized Distributor

Click to View Pricing, Inventory, Delivery & Lifecycle Information:

CONEC:

[3007W2PCT56N40X](#)