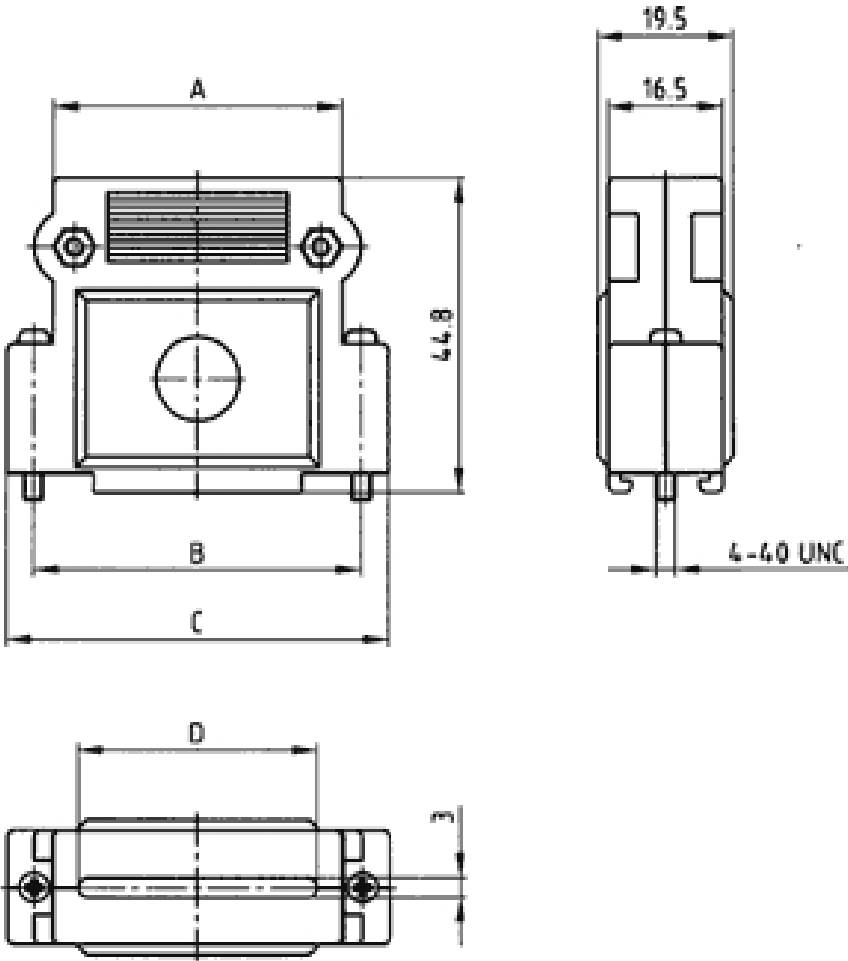


Plastic hood
for flat cable
IDC D-Subminiature

Directive 2002/95/EC
"RoHS"
Compliant

(click on the schematic(s) for a more detailed view)



No. of Pos.	A	B	C	D
9	19.25	25.00	33.35	14.0
15	28.00	33.30	41.20	21.7
25	41.70	47.00	54.80	43.4
37	58.00	63.50	71.50	49.6

This series of hoods are designed for use with flat cable IDC D-SUB connectors. They are straight exit and are available in grey or metallized plastic versions. They are a two-piece design and come standard with screwdriver actuated screws.

Part Numbers		
No. of Pos.	GREY	METALLIZED
9	300X11049X	300X11089X
15	300X11059X	300X11099X
25	300X11069X	300X11109X
37	300X11079X	300X11119X



File #: E202784



File #: LR115000

Mouser Electronics

Authorized Distributor

Click to View Pricing, Inventory, Delivery & Lifecycle Information:

[CONEC:](#)

[300X11119X](#)