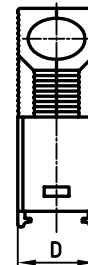
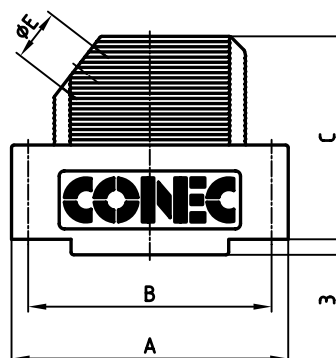
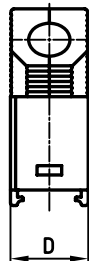
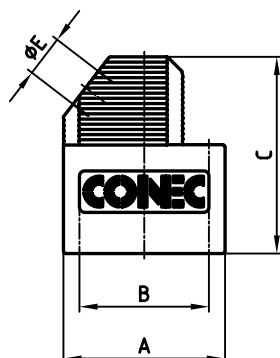


used for: D-SUB

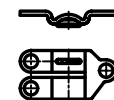
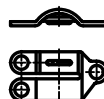
9pos.

15-50pos.



3 x SCREW FOR CABLE CLAMP

1 x CABLE CLAMP / VERSION 1



1 x CABLE CLAMP / VERSION 2

9pos. = 1 x FULL METAL SCREW  
15-50pos. = 2 x FULL METAL SCREW

No. of pos.	A±0.1	B	C±0.2	D	ØE	Part No.
9	31.20	25.0	37.95	15.0	8.0	165X00779XE
15	39.52	33.3	38.95	15.0	9.0	165X00789XE
25	53.42	47.0	38.95	15.0	11.0	165X00799XE
37	69.70	63.5	38.95	15.0	11.0	165X00809XE
50	67.30	61.1	38.95	19.0	14.5	165X00819XE

Directive 2002/95/EC  
„RoHS“  
Compliant

#### NOTES:

HOOD: PC GF 20 UL 94 V-0; BLACK  
FULL METAL SCREW: Ms 58 HARD; NICKEL PLATED  
CABLE CLAMP: Cu Ni 18 Zn 20  
SCREW FOR CABLE CLAMP: STEEL; NICKEL PLATED

APPROVAL * FREIGABE * DEBLOCAGE * AUTORIZACION * APPROVAL	
CUSTOMER APPROVAL DATE:	
NAME:	TITLE:
COMPANY NAME:	
APPROVAL * FREIGABE * DEBLOCAGE * AUTORIZACION * APPROVAL	

THIS DRAWING MAY NOT BE COPIED OR  
REPRODUCED IN ANY WAY, AND MAY NOT  
BE PASSED ON TO A THIRD PARTY, WITHOUT  
WRITTEN PERMISSION.  
OWNERSHIP AND COPYRIGHT OF CONEC GmbH  
DO NOT ALTER CAD DRAWING BY HAND

rev.	description	date	name
a	Origin		

tolerance		dim. in mm
2006	date	name
drawn	09.02.	Lehmenkühler
appd.	09.02.	Mickenbecker
norm	DIN 41652	
d-old		
CONEC®		

scale:	1:1
material:	SEE NOTES
title:	PLASTIC HOOD 9-50pos. shielded version black with metal screw
dwg no:	AutoCAD 2004 16K1A1750
part no:	SEE TABLE
DIN-A	3 sh: 1/1

# Mouser Electronics

Authorized Distributor

Click to View Pricing, Inventory, Delivery & Lifecycle Information:

CONEC:

165X00799XE