

F

E

D

C

B

A

F

E

D

C

B

A

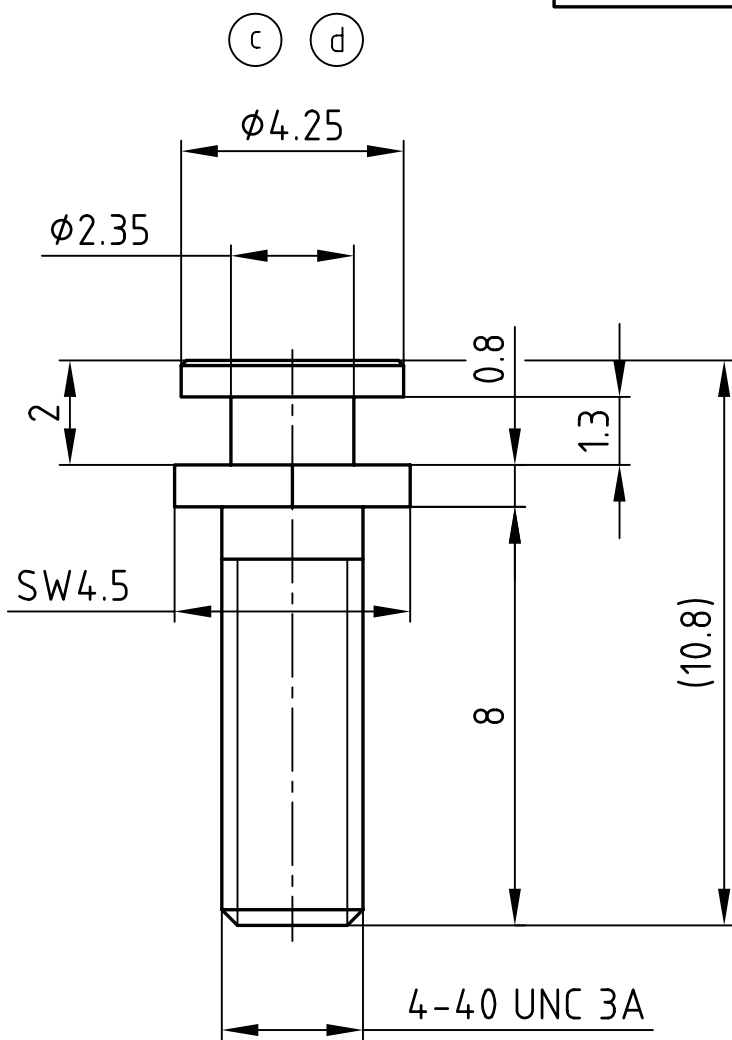
4

3

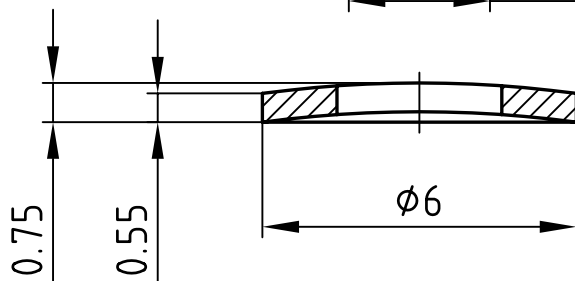
2

1

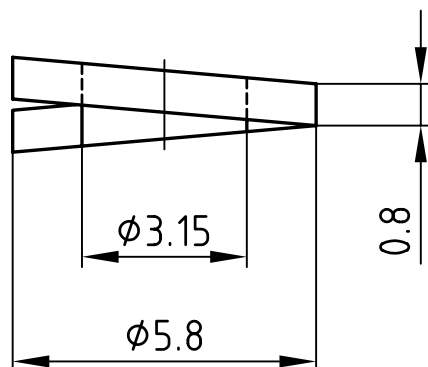
used for: D-SUB



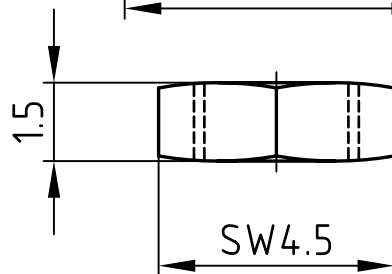
(b)
LOCKING SCREW



WASHER



SPRING WASHER



NUT

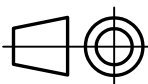

1 SET CONSISTS OF:
2 x LOCKING SCREW
2 x NUT
4 x WASHER
2 x SPRING WASHER

APPROVAL # FREIGABE # DEBLOCAGE # AUTORIZACION # APPROVAL
CUSTOMER APPROVAL DATE:
NAME: TITLE:
COMPANY NAME:
APPROVAL # FREIGABE # DEBLOCAGE # AUTORIZACION # APPROVAL



NOTES:

1. LOCKING SCREW: 4-7 μ m Sn over 2-3 μ m Cu
2. NUT: 4-7 μ m Sn over 2-3 μ m Cu
3. WASHER: 4-7 μ m Sn over 2-3 μ m Cu
4. SPRING WASHER: 4-7 μ m Sn over 2-3 μ m Cu

THIS DRAWING MAY NOT BE COPIED OR REPRODUCED IN ANY WAY, AND MAY NOT BE PASSED ON TO A THIRD PARTY WITHOUT WRITTEN PERMISSION. OWNERSHIP AND COPYRIGHT OF CONEC GmbH DO NOT ALTER CAD DRAWING BY HAND										tolerance DIN ISO 2768-m				 dim. in mm		scale: 5:1							
																		material: 9SMnPb28K					
														1995		date		name		title: LOCKING SCREW with accessory D-SUB 9-50pos.			
														drawn		18.07.		Mickenbecker					
														appd.		18.07.		Barcinski					
										1 x d		Ä 3365		02.06.2009		Lehmen.		norm					
										1 x c		Ä 2689		20.03.2007		E. Mick.		d-old					
										1 x b		Ä 2535		18.07.2006		Lehmen.							
										a		Origin											
										rev.		description		date		name							
										dwg no:				AutoCAD 2006		DIN-A							
														16V1M7A									
														sh: 1/1									
										part no:				160X10209X									

4

3

2

1

Mouser Electronics

Authorized Distributor

Click to View Pricing, Inventory, Delivery & Lifecycle Information:

[CONEC:](#)

[160X10209X](#)