

4

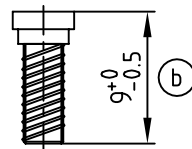
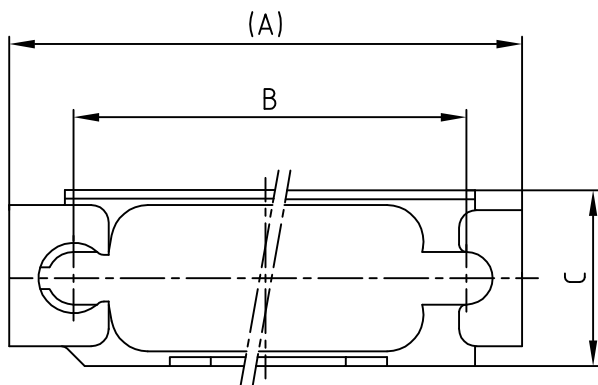
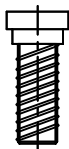
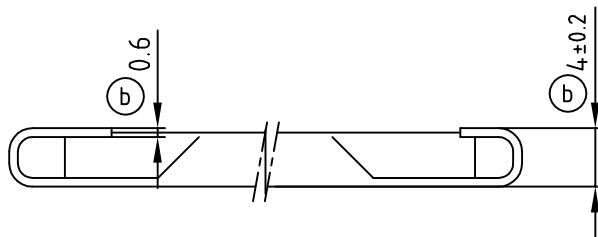
3

2

1

used for:

D-SUB



(b)

A set consists of:

1 frame

2 screws

(b)

Material and plating:

frame - stainless steel

screws; 5-7µ Zn thickfilm passivated

(b)

(b)

(b)

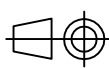
No. of Pos.	A	B	C	Part No.
9	35.0	27.4	12.0	160X10159X
15	43.3	35.7	11.5	160X10169X
25	57.0	49.4	12.0	160X10179X
37	74.4	65.9	12.0	160X10189X
50	72.0	63.5	15.0	160X10199X

Directive 2002/95/EC
"RoHS"
Compliant

THIS DRAWING MAY NOT BE COPIED OR
REPRODUCED IN ANY WAY, AND MAY NOT
BE PASSED ON TO A THIRD PARTY WITHOUT
WRITTEN PERMISSION.
OWNERSHIP AND COPYRIGHT OF CONEC GmbH
DO NOT ALTER CAD DRAWING BY HAND

8 x b	Ä 3055	14.07.2008	Lehmen
a	Origin		
rev.	description	date	name

tolerance
DIN ISO 2768-m



2002	date	name
drawn	12.03.	Schmidt
appd.	12.03.	Mickenbecker
norm		
d-old	KAT1IX5A	

CONEC®

scale: 2:1
material: SEE NOTES

title:
Slide-lock Typ 3
with locking bolt
9 - 50 pos.

dwg no: AutoCAD 2000 DIN-A
16K1A602 4
part no: SEE TABLE sh: 1/1

4

3

2

1

Mouser Electronics

Authorized Distributor

Click to View Pricing, Inventory, Delivery & Lifecycle Information:

CONEC:

[160X10159X](#) [160X10169X](#) [160X10179X](#)