

4

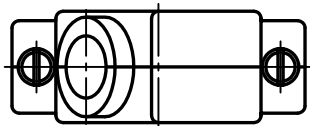
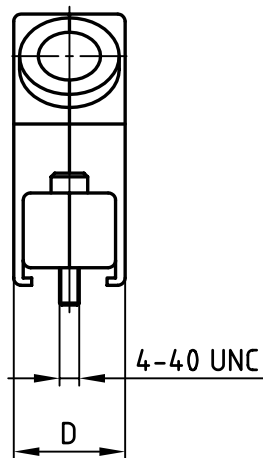
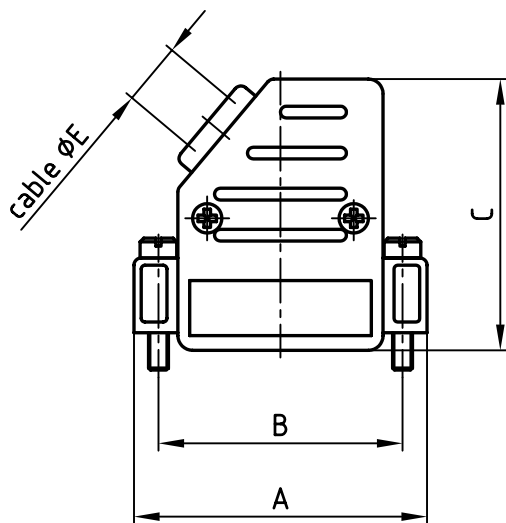
3

2

1

used for:

D-SUB



Directive 2002/95/EC  
„RoHS“  
Compliant

No. of pos.	A	B	C	D	$\phi E$	Part No.
9	31.5	25.0	37.0	15.2	8.5	600X54009X
15	40.0	33.3	37.0	15.2	8.5	600X54015X
25	53.5	47.0	41.0	15.2	11.0	600X54025X
37	70.0	63.5	41.0	15.2	11.0	600X54037X
50	67.8	61.1	41.0	18.2	12.0	600X54050X

## NOTES:

- HOOD: ABS UL 94 V-0; BLACK
- SCREWS: BRASS; NICKEL PLATED

APPROVAL # FREIGABE # DEBLOCKAGE # AUTOR/ZACON # APPROVAL	
CUSTOMER APPROVAL DATE:	
NAME:	TITLE:
COMPANY NAME:	
APPROVAL # FREIGABE # DEBLOCKAGE # AUTOR/ZACON # APPROVAL	

THIS DRAWING MAY NOT BE COPIED OR  
REPRODUCED IN ANY WAY, AND MAY NOT  
BE PASSED ON TO A THIRD PARTY WITHOUT  
WRITTEN PERMISSION.  
OWNERSHIP AND COPYRIGHT OF CONEC GmbH  
DO NOT ALTER CAD DRAWING BY HAND

			tolerance		dim. in mm
rev.	description	date	name	date	
			2005	date	name
			drawn	23.09.	Lehmenkühler
			appd.	23.09.	Mickenbecker
			norm		
			d-old		
			CONEC®		

scale:	1:1	
material:	SEE NOTES	
title:	PLASTIC HOOD 9-50pos. WITH SIDE CABLE EXIT with short screws	
dwg no:	AutoCAD 2004	DIN-A
	16K1A1503	4
		sh: 1/1
part no:	SEE TABLE	

4

3

2

1

# Mouser Electronics

Authorized Distributor

Click to View Pricing, Inventory, Delivery & Lifecycle Information:

CONEC:

[600X54009X](#) [600X54015X](#)