

4

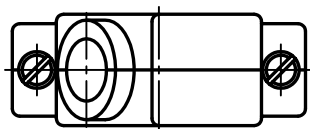
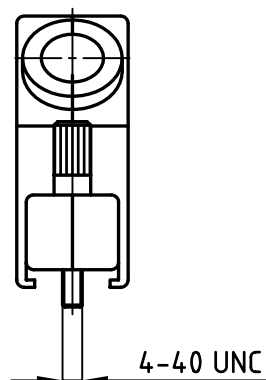
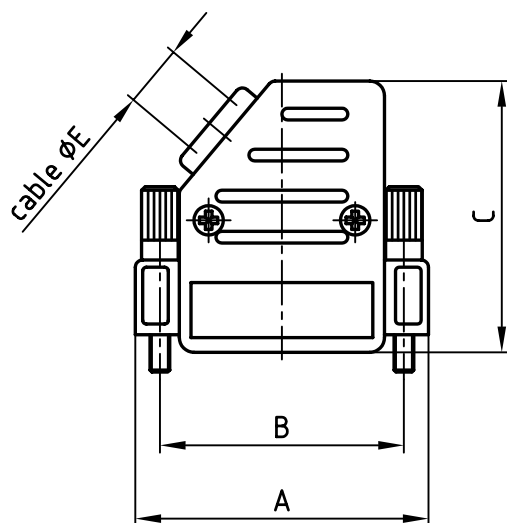
3

2

1

used for:

D-SUB





Directive 2002/95/EC  
"RoHS"  
Compliant

| No. of pos. | A    | B    | C    | D    | $\varnothing E$ | Part No:   |
|-------------|------|------|------|------|-----------------|------------|
| 9           | 31.5 | 25.0 | 37.0 | 15.2 | 8.5             | 600X57009X |
| 15          | 40.0 | 33.3 | 37.0 | 15.2 | 8.5             | 600X57015X |
| 25          | 53.5 | 47.0 | 41.0 | 15.2 | 11.0            | 600X57025X |
| 37          | 70.0 | 63.5 | 41.0 | 15.2 | 11.0            | 600X57037X |
| 50          | 67.8 | 61.1 | 41.0 | 18.2 | 12.0            | 600X57050X |

|  |        |
|--|--------|
| APPROVAL # FREIGABE # DEBLOCAGE # AUTOR/ZACON # APPROVAL |        |
| CUSTOMER APPROVAL DATE:                                  |        |
| NAME:  | TITLE: |
| COMPANY NAME:  |        |
| APPROVAL # FREIGABE # DEBLOCAGE # AUTOR/ZACON # APPROVAL |        |

THIS DRAWING MAY NOT BE COPIED OR  
REPRODUCED IN ANY WAY, AND MAY NOT  
BE PASSED ON TO A THIRD PARTY WITHOUT  
WRITTEN PERMISSION.  
OWNERSHIP AND COPYRIGHT OF CONEC GmbH  
DO NOT ALTER CAD DRAWING BY HAND

|      |             |      |      |   |          |   |
|------|-------------|------|------|---|----------|---|
|      |             |      |      | tolerance   |          | <br>dim. in mm |
|      |             |      |      | 2002  | date     | name  |
|      |             |      |      | drawn   | 28.02.   | Schmidt   |
|      |             |      |      | appd.   | 28.02.   | E. Mickenbecker   |
|      |             |      |      | norm  | DIN41652 |   |
|      |             |      |      | d-old   | KAT116QA |   |
|      |             |      |      |  |          |   |
|      |             |      |      |   |          |   |
|      |             |      |      |   |          |   |
| rev. | description | date | name |   |          |   |

|           |  |         |
|-----------|--|---------|
| scale:    | 1:1  |         |
| material: | ABS UL 94 V-0<br>Metallized                                      |         |
| title:    | Plastic hood<br>side cable exit, with jack screws<br>9 - 50 pos. |         |
| dwg no:   | AutoCAD 2000   | DIN-A   |
|           | 16K1A673   | 4       |
|           |  | sh: 1/1 |
| part no:  | SEE TABLE  |         |

4

3

2

1

# Mouser Electronics

Authorized Distributor

Click to View Pricing, Inventory, Delivery & Lifecycle Information:

[CONEC:](#)

[600X57050X](#)