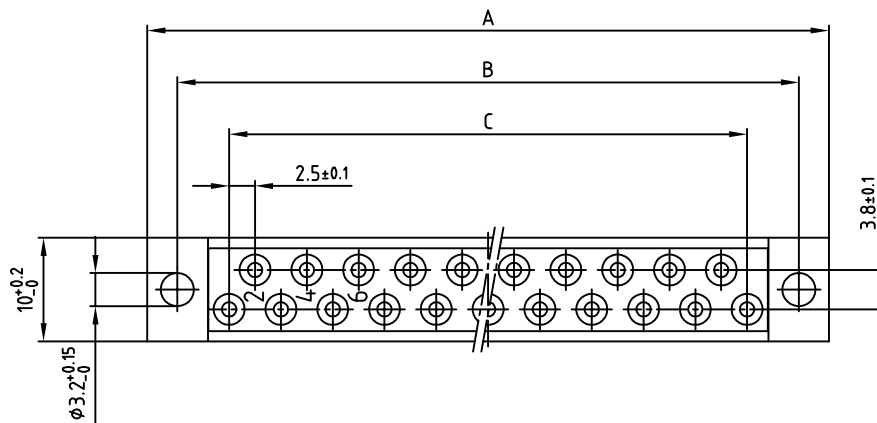
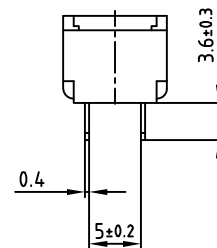
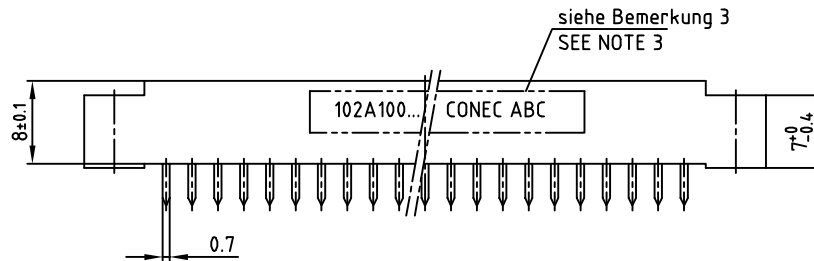
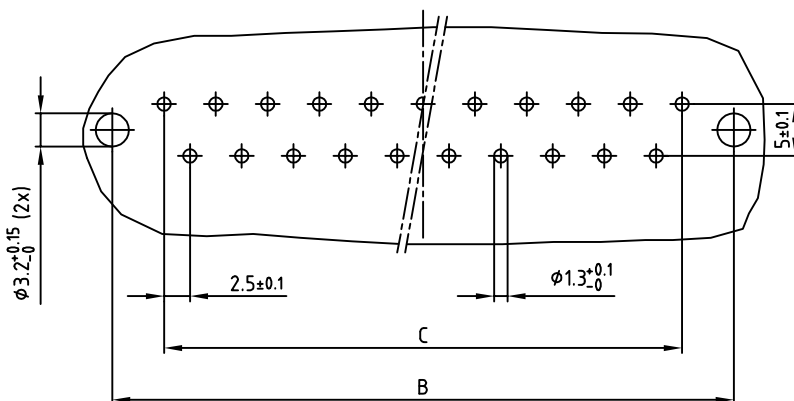


used for: DIN 41617

Part-NÖ.	POS.	A -0.3	B ±0.1	C ±0.1
102A10059X	13	45.8	40	12x2.5=30
102A10079X	21	65.8	60	20x2.5=50
102A10099X	31	90.8	85	30x2.5=75



Leiterplattenbohrbild
P.C.B.-HOLE DRILLINGS (b)



Bemerkung: (b)

1. Isolierkörper: PC GF UL 94 V-1, grau (c)
2. Kontakte: Cu-Legierung
Veredelung: min. Au über min. Ni
3. Bedruckung: [Art.-Nr. CONEC ABC]



NOTES:

1. INSULATOR: PC GF UL 94 V-1, GREY (c)
2. CONTACTS: COPPER ALLOY
PLATING: GOLD FLASH over NICKEL
3. CONNECTOR IS PART MARKED: [PART-NÖ. CONEC ABC]

Directive 2002/95/EC RoHS compliant

THIS DRAWING MAY NOT BE COPIED OR
REPRODUCED IN ANY WAY, AND MAY NOT
BE PASSED ON TO A THIRD PARTY, WITHOUT
WRITTEN PERMISSION.
OWNERSHIP AND COPYRIGHT OF CONEC GmbH
DO NOT ALTER CAD DRAWING BY HAND

rev.	description	date	name
2 x c	Ä4154	09.11.2011	K.H.
2 x b	Ä3723	18.08.2010	K.H.
a	Original		

tolerance		 dim. in mm
2004	date	name
drawn	09.03.	Lehmenkühler
appd.	09.03.	Mickenbecker
norm	DIN 41617	
d-old		
		

CONEC

scale:	2:1
material:	SEE NOTES
title:	
FEMALE CONNECTOR 13-31pos. Version "D" with straight solder pins	
dwg no:	DIN-A
10K1A008	3
part no:	SEE TABLE
	sh: 1/1

Mouser Electronics

Authorized Distributor

Click to View Pricing, Inventory, Delivery & Lifecycle Information:

CONEC:

[102A10079X](#) [102A10059X](#) [102A10099X](#)