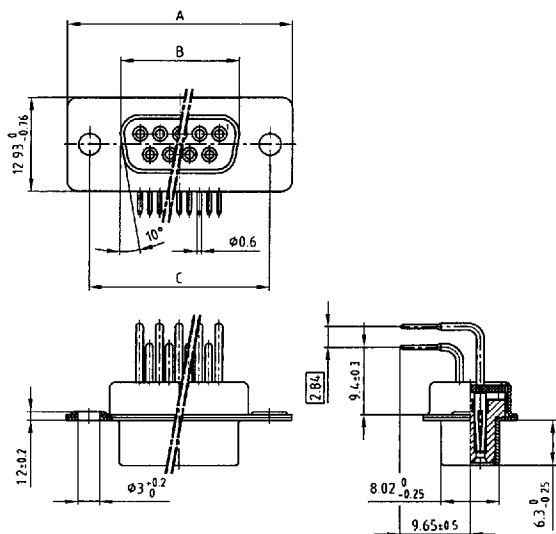


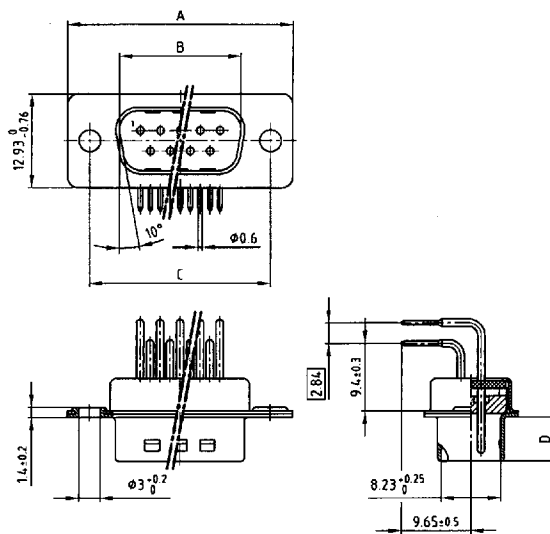
•.370 inch

Solder pin angled

Socket connector



Plug connector



Kat 1 i B9A

No. of pos.	A - 0,76	B - 0,25	C
9	31,19	16,46	25,00 $\pm 0,12$
15	39,52	24,79	33,30 $\pm 0,15$
25	53,42	38,50	47,04 $\pm 0,13$
37	69,70	54,96	63,50 $\pm 0,13$

Kat 1 i C0A

No. of pos.	A - 0,76	B ± 0,25	C	D - 0,30
9	31,19	16,79	25,00 $\pm 0,12$	6,12
15	39,52	25,12	33,30 $\pm 0,15$	6,12
25	53,42	38,84	47,04 $\pm 0,13$	5,99
37	69,70	55,30	63,50 $\pm 0,12$	5,99

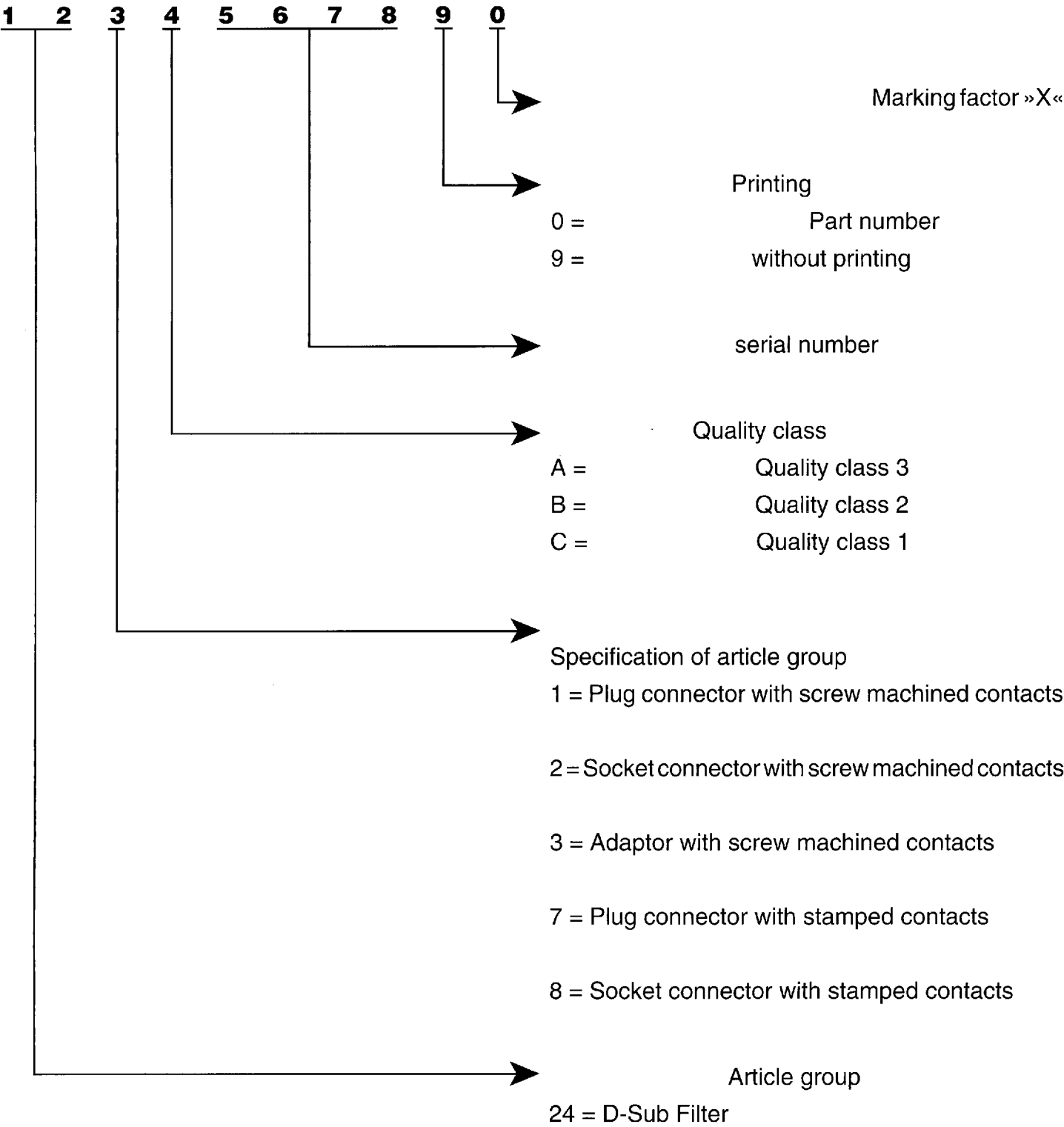
Part numbers

No. of Pos.	Socket connector – Solder pin angled			
	Typ 1	Typ 3	Typ 4	Typ 5
9	242 A 16660 X	242 A 10850 X	242 A 10930 X	242 A 10890 X
15	242 A 16670 X	242 A 10860 X	242 A 10940 X	242 A 10900 X
25	242 A 16680 X	242 A 10870 X	242 A 10950 X	242 A 10910 X
37	242 A 16690 X	242 A 10880 X	242 A 10960 X	242 A 10920 X

No. of Pos.	Plug connector – Solder pin angled			
	Typ 1	Typ 3	Typ 4	Typ 5
9	241 A 19280 X	241 A 10850 X	241 A 10930 X	241 A 10890 X
15	241 A 19290 X	241 A 10860 X	241 A 10940 X	241 A 10900 X
25	241 A 19300 X	241 A 10870 X	241 A 10950 X	241 A 10910 X
37	241 A 19310 X	241 A 10880 X	241 A 10960 X	241 A 10920 X

Filter connectors

Part number

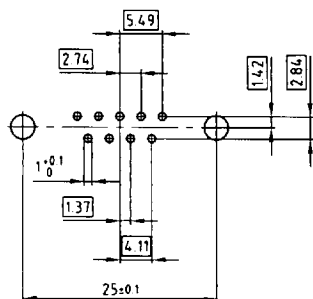


Order example

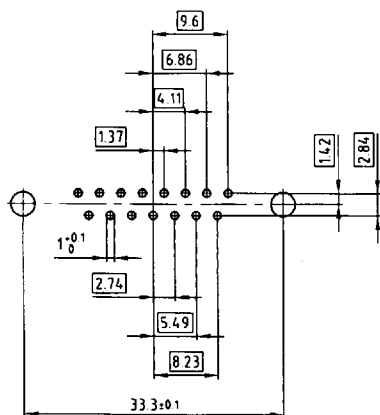
Plug connector solder pin angled 25 pos.		
Quality class	with screw machine contacts	with stamped contacts
3	241 A 12900 X	247 A 12900 X
2	241 B 12900 X	247 B 12900 X
1	241 C 12900 X	247 C 12900 X

Hole pattern for straight and angled solder pins D-Sub filter

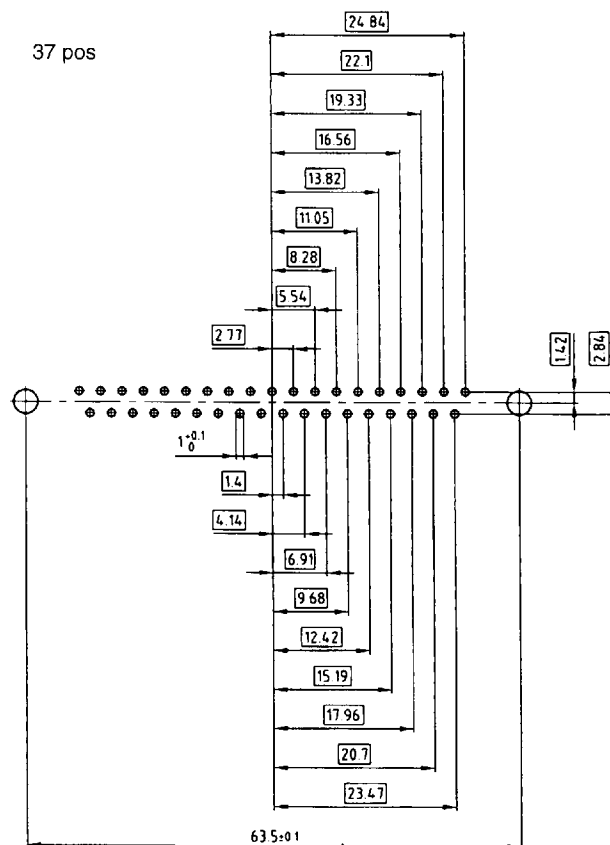
9 pos



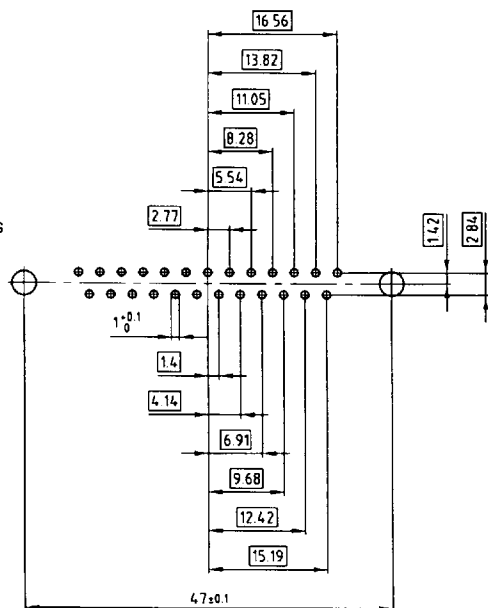
15 pos



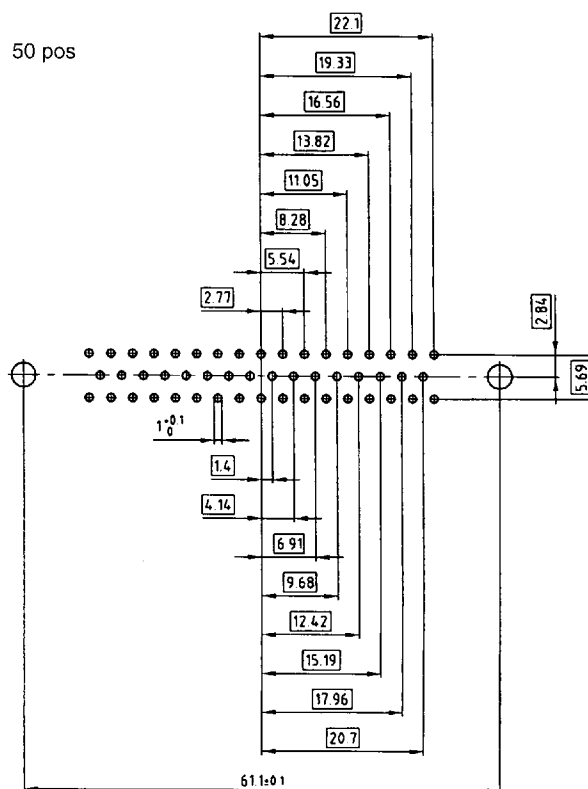
37 pos



25 pos



50 pos



Technical Data	D-Sub Standard 9,15,25,37,50 pos.	D-Sub High Density 15,26,44,62 pos.
Insulators	Polyester GF UL 94 V-0	PA 6.6 GF 25 UL 94 V-0
Contacts	Copper alloy	
Contact finish	hard-gold-plated over nickel, solder area tin plated	
Shell	steel tin plated over nickel	
Working voltage	100 V _{DC} Insulation Gr. A according to VDE 0100 *	60 V _{DC} Insulation Gr. A according to VDE 0100 *
Dielectric stand. voltage	424 V _{DC} standard 707 V _{DC} „high voltage“	424 V _{DC}
Contact resistance	max. 10mΩ with no load Δ R max. 10 mΩ with load according to din 41652 part. 2	
Insulation resistance	depending on quality class 1 ≥ 10 ¹² Ω 2 ≥ 10 ¹¹ Ω 3 ≥ 10 ⁸ Ω	
Current rating	straight version: 5,0 A (20° C) angled version: 2,5 A (20° C)	straight version: 3,0 A (20° C) angled version: 2,5 A (20° C)
Voltage surge 10/750 μs	300 V standard 500 V „high voltage“	300 V standard
Mating-/ unmating forces	9-pol. ≤ 30/29 N 15-pol. ≤ 50/33 N 25-pol. ≤ 83/56 N 37-pol. ≤ 123/82 N 50-pol. ≤ 167/111 N	15-pol. ≤ 50/33 N 26-pol. ≤ 83/56 N 44-pol. ≤ 110/74 N
Temperature range storage	- 55° C /to + 125° C	
Temperature range working	- 25° C /to + 105° C	- 25° C /to + 85° C
Humidity	40° C / 85% relative	
Capacitor values	/type 1 min. 144 pF max. 216 pF /type 2 min. 240 pF max. 360 pF /type 3 min. 296 pF max. 444 pF /type 4 min. 664 pF max. 996 pF /type 5 min. 1040 pF max. 1560 pF	/type 3 min. 296 pF max. 444 pF /type 4 min. 664 pF max. 996 pF
Quality class	/Quality class 3 = 50 mating cycles /Quality class 2 = 200 mating cycles /Quality class 1 = 500 mating cycles	

Mouser Electronics

Authorized Distributor

Click to View Pricing, Inventory, Delivery & Lifecycle Information:

CONEC:

<u>241A10860X</u>	<u>241A10870X</u>	<u>241A10880X</u>	<u>241A10890X</u>	<u>241A10900X</u>	<u>241A10910X</u>	<u>241A10920X</u>	<u>241A10940X</u>
<u>241A10950X</u>	<u>241A10960X</u>	<u>241A19280X</u>	<u>241A19290X</u>	<u>241A19300X</u>	<u>241A19310X</u>	<u>242A10850X</u>	<u>242A10880X</u>
<u>242A10890X</u>	<u>242A10920X</u>	<u>242A10930X</u>	<u>242A10950X</u>	<u>242A10960X</u>	<u>242A16660X</u>	<u>242A16680X</u>	<u>242A16690X</u>