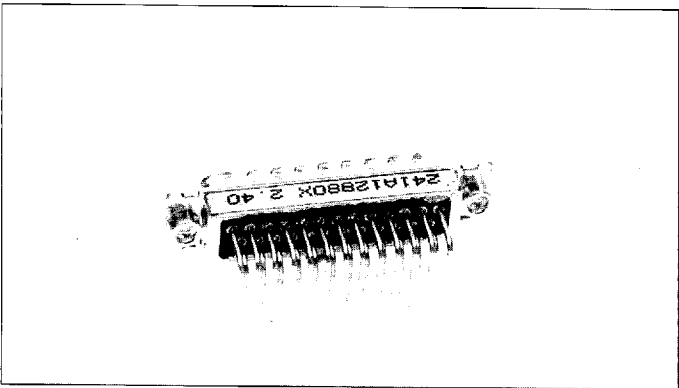


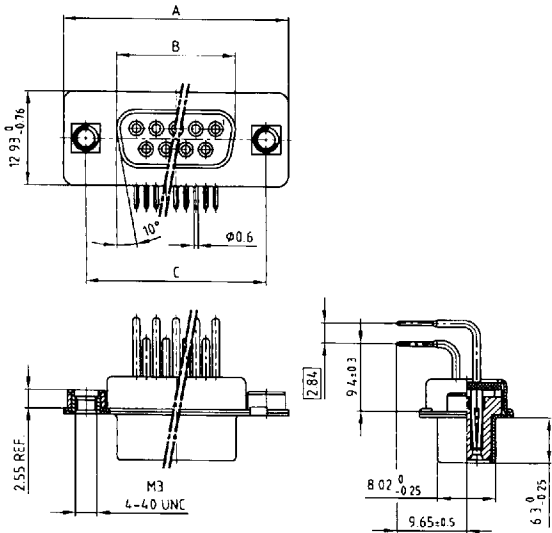
Filter connectors



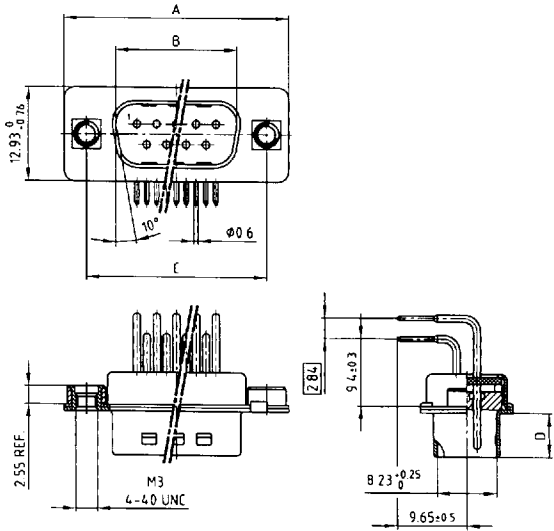
•370 inch

Solder pin angled with threaded insert

Socket connector



Plug connector



Kat 1 i C1A

| No. of pos. | A - 0.76 | B - 0.25 | C |
|-------------|----------|----------|--|
| 9 | 31,19 | 16,46 | 25,00 $\begin{smallmatrix} +0,12 \\ -0,15 \end{smallmatrix}$ |
| 15 | 39,52 | 24,79 | 33,30 $\begin{smallmatrix} +0,15 \\ -0,10 \end{smallmatrix}$ |
| 25 | 53,42 | 38,50 | 47,04 $\begin{smallmatrix} +0,13 \\ -0,10 \end{smallmatrix}$ |
| 37 | 69,70 | 54,96 | 63,50 $\begin{smallmatrix} +0,13 \\ -0,10 \end{smallmatrix}$ |

Kat 1 i C2A

| No. of pos. | A - 0.76 | B + 0.25 | C | D - 0.30 |
|-------------|----------|----------|--|----------|
| 9 | 31,19 | 16,79 | 25,00 $\begin{smallmatrix} +0,12 \\ -0,15 \end{smallmatrix}$ | 6,12 |
| 15 | 39,52 | 25,12 | 33,30 $\begin{smallmatrix} +0,15 \\ -0,10 \end{smallmatrix}$ | 6,12 |
| 25 | 53,42 | 38,84 | 47,04 $\begin{smallmatrix} +0,13 \\ -0,10 \end{smallmatrix}$ | 5,99 |
| 37 | 69,70 | 55,30 | 63,50 $\begin{smallmatrix} +0,13 \\ -0,10 \end{smallmatrix}$ | 5,99 |

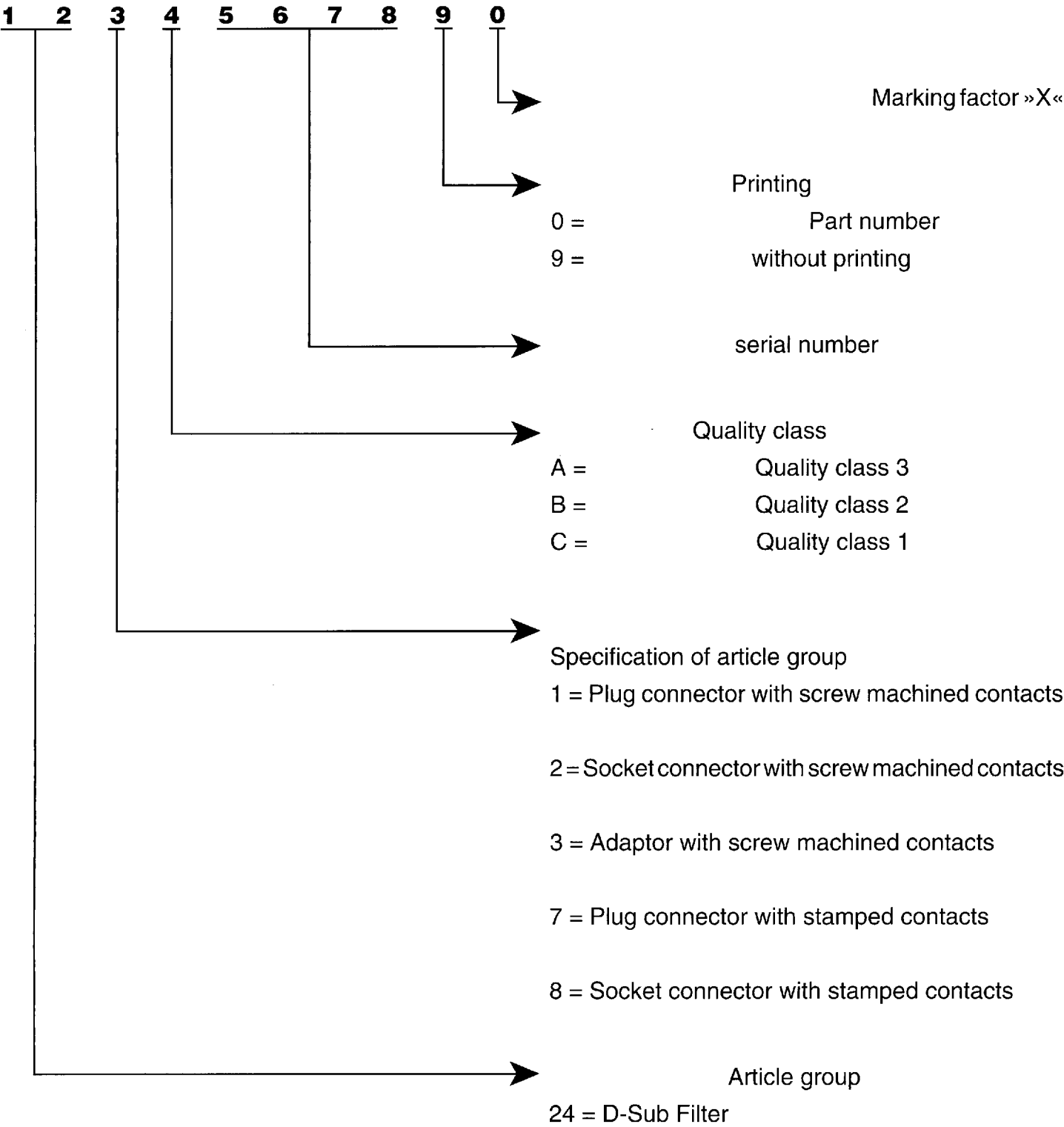
Part numbers

| No. of Pos. | Socket connector with thread – Solder pin angled | | | | |
|-------------|--|---------------|---------------|---------------|---------------|
| | | Typ 1 | Typ 3 | Typ 4 | Typ 5 |
| 9 | thread UNC 4-40 | 242 A 16700 X | 242 A 13780 X | 242 A 13860 X | 242 A 13820 X |
| 15 | | 242 A 16710 X | 242 A 13790 X | 242 A 13870 X | 242 A 13830 X |
| 25 | | 242 A 16720 X | 242 A 13800 X | 242 A 13880 X | 242 A 13840 X |
| 37 | | 242 A 16730 X | 242 A 13810 X | 242 A 13890 X | 242 A 13850 X |
| 9 | thread M 3 | 242 A 16740 X | 242 A 13900 X | 242 A 13980 X | 242 A 13940 X |
| 15 | | 242 A 16750 X | 242 A 13910 X | 242 A 13990 X | 242 A 13950 X |
| 25 | | 242 A 16760 X | 242 A 13920 X | 242 A 14000 X | 242 A 13960 X |
| 37 | | 242 A 16770 X | 242 A 13930 X | 242 A 14010 X | 242 A 13970 X |

| No. of Pos. | Plug connector with thread – Solder pin angled | | | | |
|-------------|--|---------------|---------------|---------------|---------------|
| | | Typ 1 | Typ 3 | Typ 4 | Typ 5 |
| 9 | thread UNC 4-40 | 241 A 19320 X | 241 A 13890 X | 241 A 13970 X | 241 A 13930 X |
| 15 | | 241 A 19330 X | 241 A 13900 X | 241 A 13980 X | 241 A 13940 X |
| 25 | | 241 A 19340 X | 241 A 13910 X | 241 A 13990 X | 241 A 13950 X |
| 37 | | 241 A 19350 X | 241 A 13920 X | 241 A 14000 X | 241 A 13960 X |
| 9 | thread M 3 | 241 A 19360 X | 241 A 14010 X | 241 A 14090 X | 241 A 14050 X |
| 15 | | 241 A 19370 X | 241 A 14020 X | 241 A 14100 X | 241 A 14060 X |
| 25 | | 241 A 19380 X | 241 A 14030 X | 241 A 14110 X | 241 A 14070 X |
| 37 | | 241 A 19390 X | 241 A 14040 X | 241 A 14120 X | 241 A 14080 X |

Filter connectors

Part number

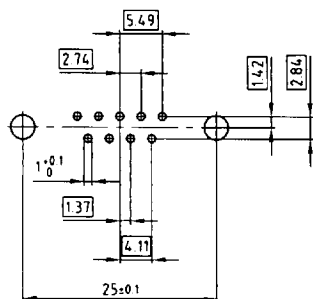


Order example

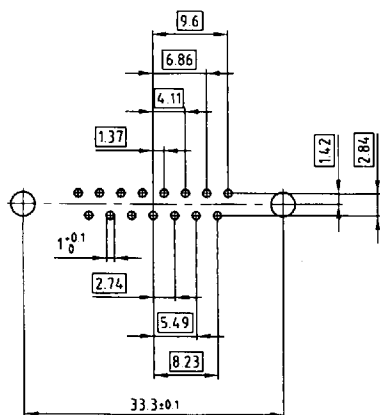
| Plug connector solder pin angled 25 pos. | | |
|--|-----------------------------|-----------------------|
| Quality class | with screw machine contacts | with stamped contacts |
| 3 | 241 A 12900 X | 247 A 12900 X |
| 2 | 241 B 12900 X | 247 B 12900 X |
| 1 | 241 C 12900 X | 247 C 12900 X |

Hole pattern for straight and angled solder pins D-Sub filter

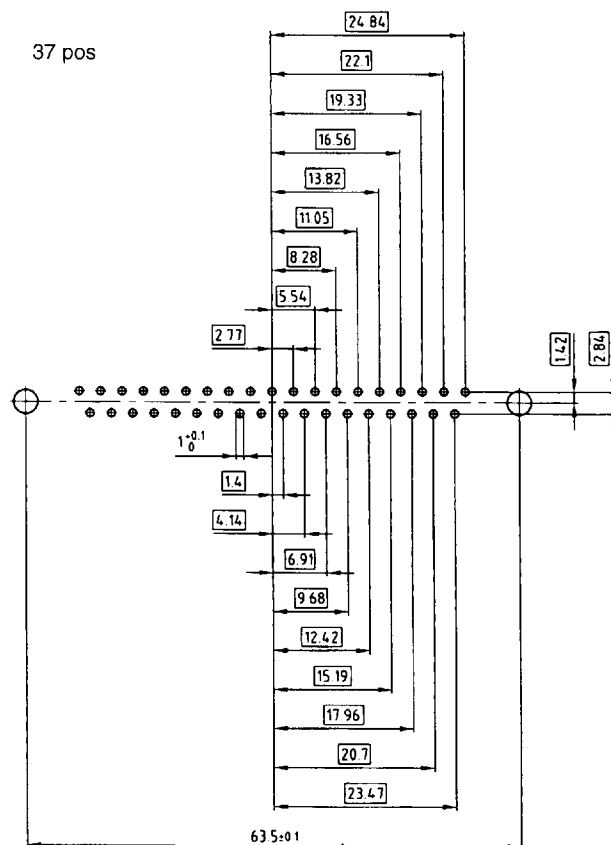
9 pos



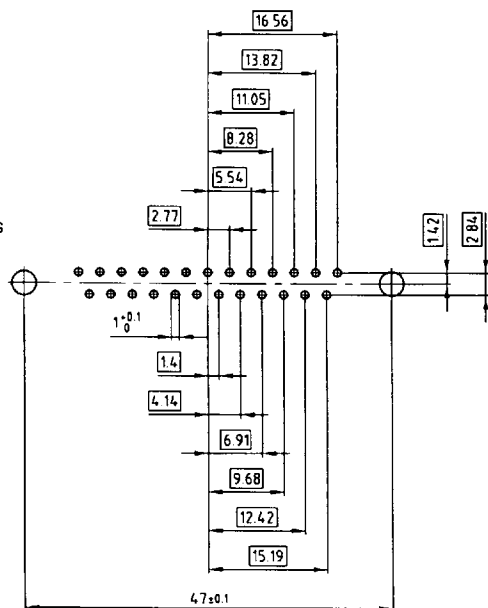
15 pos



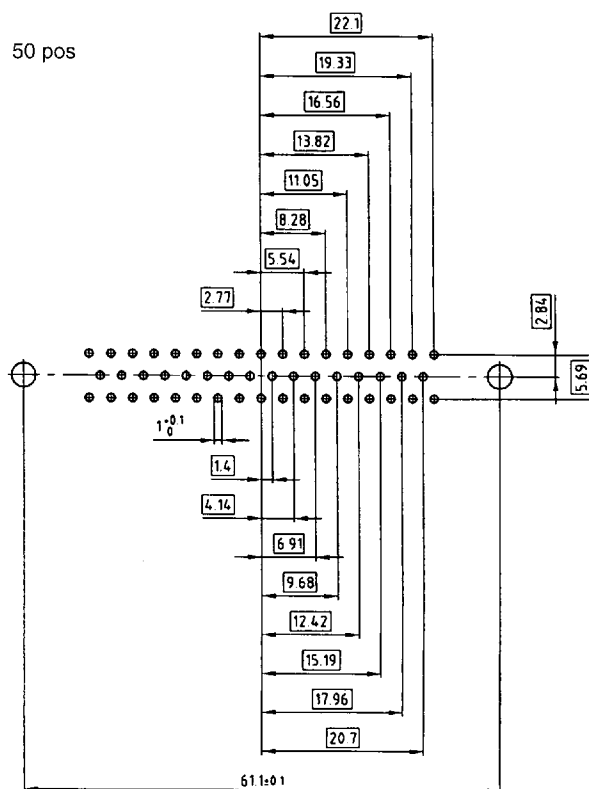
37 pos



25 pos



50 pos



| Technical Data | D-Sub Standard 9,15,25,37,50 pos. | D-Sub High Density 15,26,44,62 pos. |
|---------------------------|---|--|
| Insulators | Polyester GF UL 94 V-0 | PA 6.6 GF 25 UL 94 V-0 |
| Contacts | Copper alloy | |
| Contact finish | hard-gold-plated over nickel, solder area tin plated | |
| Shell | steel tin plated over nickel | |
| Working voltage | 100 V _{DC} Insulation Gr. A according to VDE 0100 * | 60 V _{DC} Insulation Gr. A according to VDE 0100 * |
| Dielectric stand. voltage | 424 V _{DC} standard 707 V _{DC} „high voltage“ | 424 V _{DC} |
| Contact resistance | max. 10mΩ with no load Δ R max. 10 mΩ with load according to din 41652 part. 2 | |
| Insulation resistance | depending on quality class 1 ≥ 10 ¹² Ω 2 ≥ 10 ¹¹ Ω 3 ≥ 10 ⁸ Ω | |
| Current rating | straight version: 5,0 A (20° C) angled version: 2,5 A (20° C) | straight version: 3,0 A (20° C) angled version: 2,5 A (20° C) |
| Voltage surge 10/750 μs | 300 V standard 500 V „high voltage“ | 300 V standard |
| Mating-/ unmating forces | 9-pol. ≤ 30/29 N 15-pol. ≤ 50/33 N 25-pol. ≤ 83/56 N 37-pol. ≤ 123/82 N 50-pol. ≤ 167/111 N | 15-pol. ≤ 50/33 N 26-pol. ≤ 83/56 N 44-pol. ≤ 110/74 N |
| Temperature range storage | - 55° C /to + 125° C | |
| Temperature range working | - 25° C /to + 105° C | - 25° C /to + 85° C |
| Humidity | 40° C / 85% relative | |
| Capacitor values | /type 1 min. 144 pF max. 216 pF /type 2 min. 240 pF max. 360 pF /type 3 min. 296 pF max. 444 pF /type 4 min. 664 pF max. 996 pF /type 5 min. 1040 pF max. 1560 pF | /type 3 min. 296 pF max. 444 pF /type 4 min. 664 pF max. 996 pF |
| Quality class | /Quality class 3 = 50 mating cycles /Quality class 2 = 200 mating cycles /Quality class 1 = 500 mating cycles | |

Mouser Electronics

Authorized Distributor

Click to View Pricing, Inventory, Delivery & Lifecycle Information:

CONEC:

| | | | | | | | |
|-----------------------------------|-----------------------------------|-----------------------------------|-----------------------------------|-----------------------------------|-----------------------------------|-----------------------------------|-----------------------------------|
| <u>241A13890X</u> | <u>241A13900X</u> | <u>241A13910X</u> | <u>241A13920X</u> | <u>241A13930X</u> | <u>241A13940X</u> | <u>241A13950X</u> | <u>241A13960X</u> |
| <u>241A13970X</u> | <u>241A13980X</u> | <u>241A13990X</u> | <u>241A14000X</u> | <u>241A14010X</u> | <u>241A14020X</u> | <u>241A14030X</u> | <u>241A14040X</u> |
| <u>241A14050X</u> | <u>241A14060X</u> | <u>241A14070X</u> | <u>241A14080X</u> | <u>241A14090X</u> | <u>241A14100X</u> | <u>241A14110X</u> | <u>241A14120X</u> |
| <u>241A19320X</u> | <u>241A19330X</u> | <u>241A19340X</u> | <u>241A19350X</u> | <u>241A19360X</u> | <u>241A19370X</u> | <u>241A19380X</u> | <u>241A19390X</u> |
| <u>242A13780X</u> | <u>242A13790X</u> | <u>242A13800X</u> | <u>242A13810X</u> | <u>242A13820X</u> | <u>242A13850X</u> | <u>242A13860X</u> | <u>242A13870X</u> |
| <u>242A13880X</u> | <u>242A13890X</u> | <u>242A13900X</u> | <u>242A13910X</u> | <u>242A13920X</u> | <u>242A13930X</u> | <u>242A13940X</u> | <u>242A13950X</u> |
| <u>242A13960X</u> | <u>242A13970X</u> | <u>242A13980X</u> | <u>242A13990X</u> | <u>242A14000X</u> | <u>242A14010X</u> | <u>242A16700X</u> | <u>242A16710X</u> |
| <u>242A16720X</u> | <u>242A16730X</u> | <u>242A16740X</u> | <u>242A16750X</u> | <u>242A16760X</u> | <u>242A16770X</u> | | |