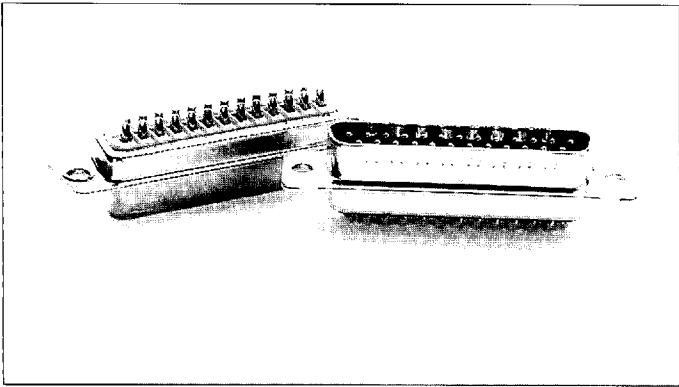
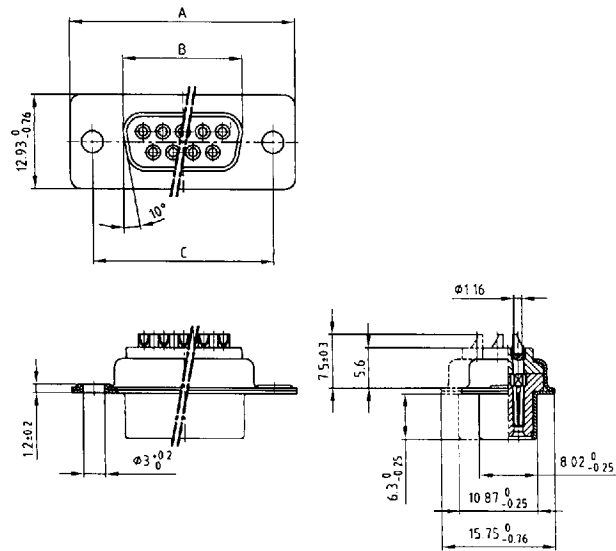


D-Subminiature connectors



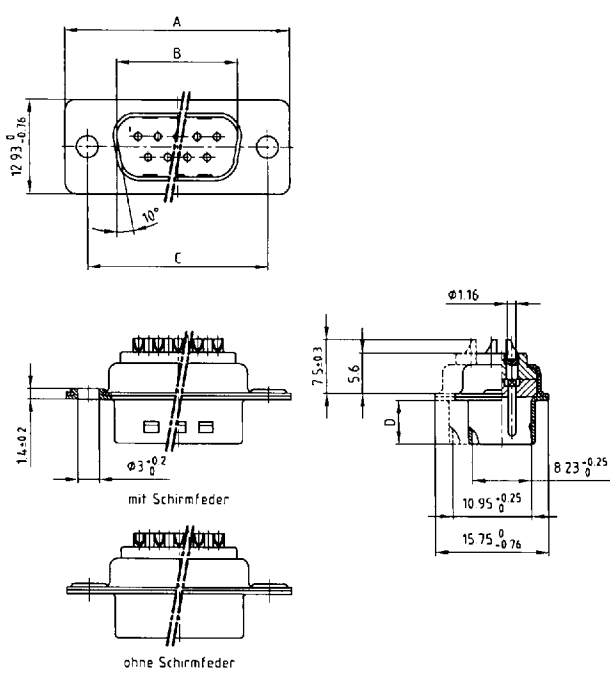
Solder cup
stamped contacts

Socket connector



Solder cup accepts cable AWG 20

Plug connector



Kat 1 i F2A

| No. of pos. | A - 0.76 | B - 0.25 | C |
|-------------|----------|----------|------------------|
| 9 | 31,19 | 16,46 | 25,00 ± 0.12 |
| 15 | 39,52 | 24,79 | 33,30 ± 0.15 |
| 25 | 53,42 | 38,50 | 47,04 ± 0.13 |
| 37 | 69,70 | 54,96 | 63,50 ± 0.13 |
| 50 | 67,31 | 52,55 | 61,10 ± 0.14 |

Kat 1 i F3A

| No. of pos. | A - 0.76 | B + 0.25 | C | D - 0.30 |
|-------------|----------|----------|------------------|----------|
| 9 | 31,19 | 16,79 | 25,00 ± 0.12 | 6,12 |
| 15 | 39,52 | 25,12 | 33,30 ± 0.15 | 6,12 |
| 25 | 53,42 | 38,84 | 47,04 ± 0.13 | 5,99 |
| 37 | 69,70 | 55,30 | 63,50 ± 0.13 | 5,99 |
| 50 | 67,31 | 52,68 | 61,10 ± 0.14 | 5,99 |

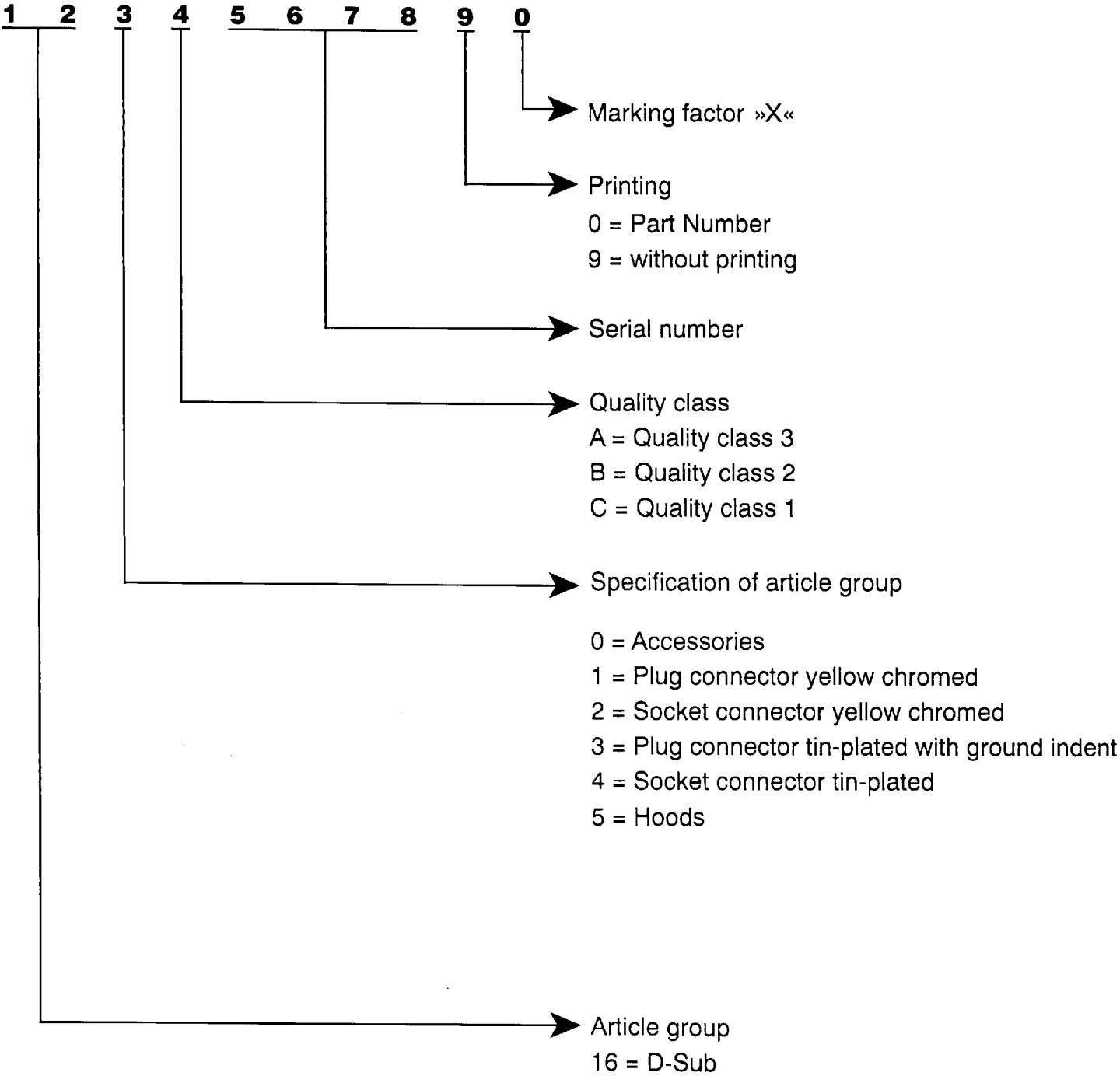
Part numbers

| No. of Pos. | Socket connector – solder cup | |
|-------------|-------------------------------|-------------------------------|
| | yellow zinc | tin-plated |
| 9 | CDF 09 LRE 162 A 17789 X | CDF 09 LRESN 164 A 17789 X |
| 15 | CDF 15 LRE 162 A 17799 X | CDF 15 LRESN 164 A 17799 X |
| 25 | CDF 25 LRE 162 A 17809 X | CDF 25 LRESN 164 A 17809 X |
| 37 | CDF 37 LRE 162 A 17819 X | CDF 37 LRESN 164 A 17819 X |
| 50 | CDF 50 LRE 162 A 17829 X | CDF 50 LRESN 164 A 17829 X |

| No. of Pos. | Plug connector – solder cup | |
|-------------|-----------------------------------|--------------------------------|
| | yellow zinc without ground indent | tin-plated with ground indent |
| 9 | CDS 09 LRE 161 A 17379 X | CDS 09 LFRESN 163 A 17379 X |
| 15 | CDS 15 LRE 161 A 17389 X | CDS 15 LFRESN 163 A 17389 X |
| 25 | CDS 25 LRE 161 A 17399 X | CDS 25 LFRESN 163 A 17399 X |
| 37 | CDS 37 LRE 161 A 17409 X | CDS 37 LFRESN 163 A 17409 X |
| 50 | CDS 50 LRE 161 A 17419 X | CDS 50 LFRESN 163 A 17419 X |



Part Number



Order example

| Plug connector Solder bucket 25 pos. without printing | | | |
|---|--|-------------|---------------|
| Quality class | | Part Number | |
| 3 | | CDS 25 L | 161 A 10039 X |
| 2 | | CDS 25 L | 161 B 10039 X |
| 1 | | CDS 25 L | 161 C 10039 X |

| Technical Data | D-Sub Standard | D-Sub High Density |
|---|--|--|
| Initial contact resistance | ≤ 10 mΩ | ≤ 10 mΩ |
| Initial insulation resistance | Quality class 1 ≥ 5GΩ Quality class 2 ≥ 5GΩ Quality class 3 ≥ 5GΩ | Quality class 1 ≥ 5GΩ Quality class 2 ≥ 5GΩ Quality class 3 ≥ 5GΩ |
| Clearance distance | contact–contact ≥ 1.0 mm contact–ground ≥ 1.2 mm | ≥ 0.6 mm |
| Creepage distance | contact–contact ≥ 1.0 mm contact–ground ≥ 1.2 mm | ≥ 0.6 mm |
| Test voltage V. r. m. s./NM | 1000 V | 1000 V |
| Working voltage/Insulation group* * nach SEV 50 V – acc. to SEV 50 V | 125 V ≈ | 60 V ≈ |
| Working current 20° C | 5 A max. | 25 A max. |
| Operating temperature | - 55° C – + 125° C | - 55° C – + 125° C |
| Moulding material | Polyester GF UL 94 V-O | PA 6.6 GF 25 UL 94 V-O |
| Contact material | Copper alloy | Copper alloy |
| Contact finish | hard-gold-plated over nickel | hard-gold-plated over nickel |
| Shell | Sheet steel, zinc lined and yellow chromate Sheet steel, nickel underneath and tin-plated | Sheet steel, nickel underneath and tin-plated |
| Insertion and withdrawal froces | 9-polig/way 30 N 15-polig/way 50 N 25-polig/way 83 N 37-polig/way 123 N 50-polig/way 167 N | 15-polig/way 50 N 26-polig/way 84 N 44-polig/way 120 N 62-polig/way 170 N 78-polig/way 200 N |
| Quality classes | Quality class 1 Quality class 2 Quality class 3 | 500 mating cycles 200 mating cycles 50 mating cycles |

Mouser Electronics

Authorized Distributor

Click to View Pricing, Inventory, Delivery & Lifecycle Information:

CONEC:

[163A17409X](#) [163A17419X](#) [161A17419X](#)