

D-SUB STANDARD – IP67

Solder cup – Precision machined contacts – For wire size AWG 20

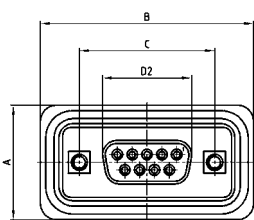


RoHS compliant - CSA listed, File No.LR115000-1 UL listed, File No. E202784

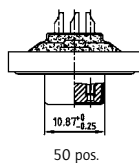
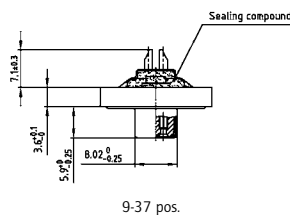
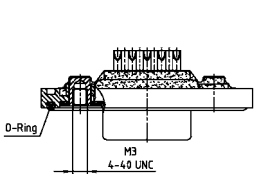
DESCRIPTION

- Suitable for wire size **AWG 20**
- Mounting style:
with 4-40 UNC or M3 threaded insert including hex locking bolt
- Quality class 3 (also available in quality class 1)
- Shell: Brass tin plated (stainless steel available on request)
- Nickel plated die-cast frame
(Black plastic frame on request)

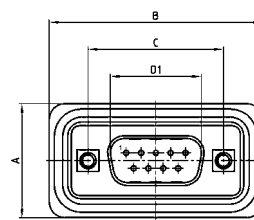
SOCKET CONNECTOR



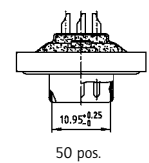
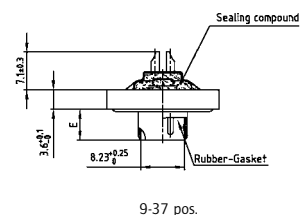
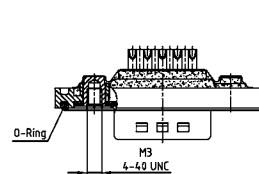
No. of pos.	A +0.2	B +0.2	C	D2 -0.25
09	21.10	39.40	25.00 ^{+0.12}	16.46
15	21.10	47.70	33.30 ^{+0.15} _{-0.10}	24.79
25	21.10	61.40	47.04 ^{+0.13}	38.50
37	21.10	77.90	63.50 ^{+0.13}	54.96
50	23.90	75.50	61.10 ^{+0.14} _{-0.11}	52.55



PLUG CONNECTOR



No. of pos.	A +0.2	B +0.2	C	D1 -0.25	E -0.30
9	21.10	39.40	25.00 ^{+0.12} _{-0.12}	16.79	5.82
15	21.10	47.70	33.30 ^{+0.15} _{-0.10}	25.12	5.82
25	21.10	61.40	47.04 ^{+0.13}	38.84	5.69
37	21.10	77.90	63.50 ^{+0.13}	55.30	5.69
50	23.90	75.50	61.10 ^{+0.14} _{-0.11}	52.68	5.69



ORDER DATA

SOCKET CONNECTOR		
No. of pos.	Mounting style	Part Number
09	M3 Threaded insert	6 STD09SAM99B20 X
15	M3 Threaded insert	6 STD15SAM99B20 X
25	M3 Threaded insert	6 STD25SAM99B20 X
37	M3 Threaded insert	6 STD37SAM99B20 X
50	M3 Threaded insert	6 STD50SAM99B20 X
09	4-40 UNC Threaded insert	6 STD09SAM99B30 X
15	4-40 UNC Threaded insert	6 STD15SAM99B30 X
25	4-40 UNC Threaded insert	6 STD25SAM99B30 X
37	4-40 UNC Threaded insert	6 STD37SAM99B30 X
50	4-40 UNC Threaded insert	6 STD50SAM99B30 X

PLUG CONNECTOR		
No. of pos.	Mounting style	Part Number
09	M3 Threaded insert	6 STD09PAM99B20 X
15	M3 Threaded insert	6 STD15PAM99B20 X
25	M3 Threaded insert	6 STD25PAM99B20 X
37	M3 Threaded insert	6 STD37PAM99B20 X
50	M3 Threaded insert	6 STD50PAM99B20 X
09	4-40 UNC Threaded insert	6 STD09PAM99B30 X
15	4-40 UNC Threaded insert	6 STD15PAM99B30 X
25	4-40 UNC Threaded insert	6 STD25PAM99B30 X
37	4-40 UNC Threaded insert	6 STD37PAM99B30 X
50	4-40 UNC Threaded insert	6 STD50PAM99B30 X

Mouser Electronics

Authorized Distributor

Click to View Pricing, Inventory, Delivery & Lifecycle Information:

CONEC:

[6STD09PAM99B20X](#) [6STD15PAM99B30X](#) [6STD09SAM99B30X](#) [6STD09SAM99B20X](#) [6STD37PAM99B20X](#)
[6STD37PAM99B30X](#) [6STD25SAM99B30X](#) [6STD37SAM99B30X](#)