

PART NUMBER CREATOR

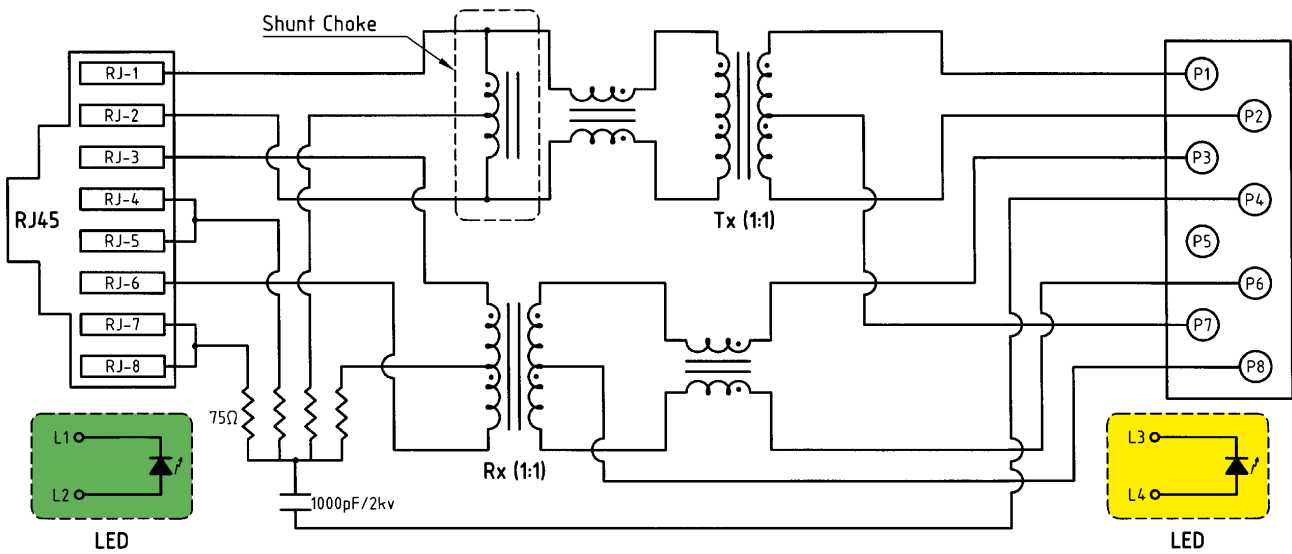
	RJ45	T	J	S	1	1	A	C	O	N	O	X
Product Line												
PCB-Termination												
T = Solder pin, straight												
S = SMT												
Contact finish												
J = Min. 50 micro inch, 1.27μ gold plated over nickel												
Other plating options are available.												
Shielding												
S =Fully shielded												
Number of ports												
1 = 1 Port												
2 = 2 Ports												
4 = 4 Ports												
6 = 6 Ports												
8 = 8 Ports												
Number of rows												
1 = 1 row												
Turns ratio of transformer												
A = 1:1/1:1 (Tx/Rx)												
B = 1:1.414/1:1 (Tx/Rx)												
Other turns ratio of transformer are avaible, please contact factory.												
Shunt choke option												
C = With shunt choke in transmit channel												
N = Without shunt choke in transmit channel												
Impedance matching resistors												
O = Without impedance matching resistors												
LED Color options												
N = Without LED												
1 = Green LED (left), yellow LED (right)												
Other LED combinations are available, please contact factory.												
Standard												
OX = Standard												

TECHNICAL DATA

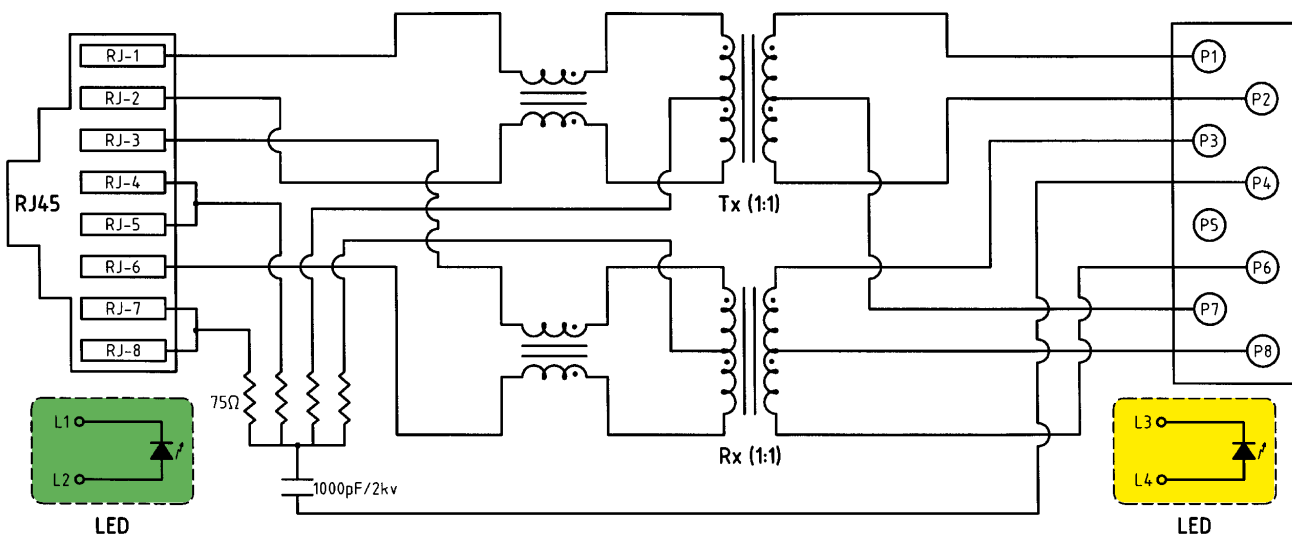
Specifications	
Housing, solder pin, straight	Polyester glass filled, black, UL94 V-0
Housing, SMT-Termination	Nylon 46 glass filled, black, UL94 V-0
Shielding	.008" / 0.20 mm thick copper alloy
Contact material	.014" / 0.35 mm thick copper alloy
Mating area plating	50µ" / 1.27 µm gold min. over 30µ" / 0.76 µm min. nickel
Solder tails plating	Tin plated
OCL (Open Circuit Inductance)	Min. 350 µH at 8mA DC bias
Leakage inductance	Max. 0.35 µH
Inter-winding capacitance	Max. 25 pF
DC-Resistance	Max. 1.0 Ω
Turns ratio	1:1/1:1 ± 3% or Tx/Rx = 1:1.414/1:1 ± 3%
Rise time and fall time	3.0 ns (typical)
Mating force	Max. 22 N
Retention force	Min. 89 N
Mating cycles	Min. 1 000
Contact resistance	Max. 20 mΩ
Insulation resistance	Min. 1000 mΩ
Dielectric with standing voltage	1 500V ms (Signal to Shield)
Current rating	Max. 0,05A
Spezifikation at 25°C (Operating temperature -40°C to +85°C)	
Insertion loss	0.1-100 MHZ 1.0 dB max
Return loss	0.1-30 MHZ 20.0 dB Type 60 MHZ 15.0 dB Type 80 MHZ 12.0 dB Type
Next near and cross talk	0.1-30 MHZ 50.0 dB Type 60 MHZ 45.0 dB Type 100 MHZ 40.0 dB Type
Differential to common mode rejection	60 MHZ 40.0 dB Type 100 MHZ 35.0 dB Type
Common mode rejection ration	60 MHZ 35.0 dB Type 100 MHZ 30.0 dB Type
Hi-Pot	1500 Vrms 60 sec.
Standard-LED	
Color	Green Yellow
Wave length	565 nm 585 nm
Forward voltage with I _F =20 mA	2.6 V (max) 2.6 V (max) 2.1 V (Type) 2.0 V (Type)
Reserve voltage with I _R =10 µA	5.0 V (Type) 5.0 V (Type)
Luminous intensity with I _F =20 mA	15 mcd (min) 20 mcd (min) 25 mcd (Type) 30 mcd (Type)

SCHEMATICS

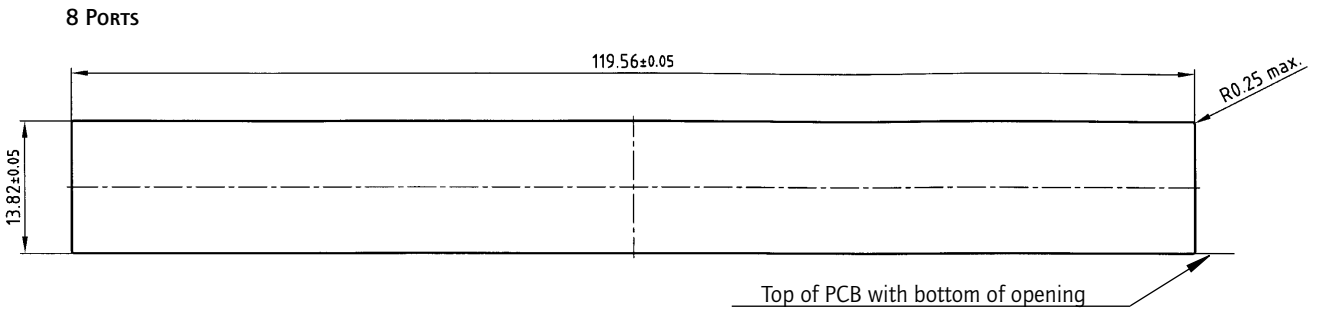
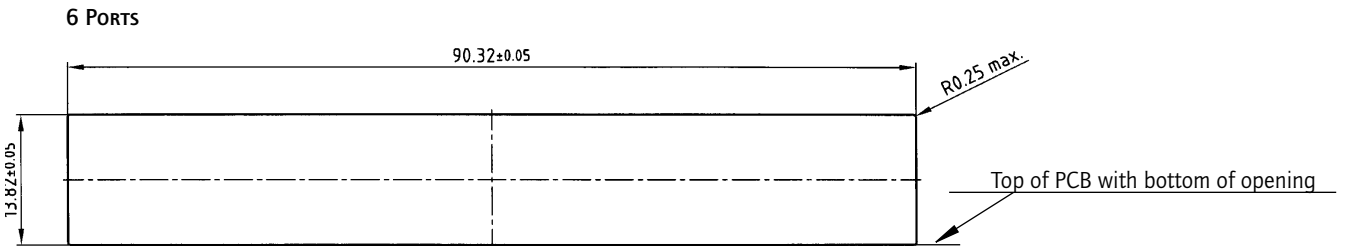
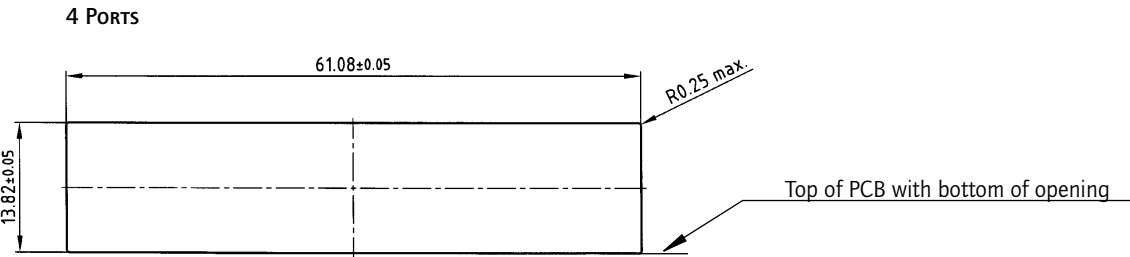
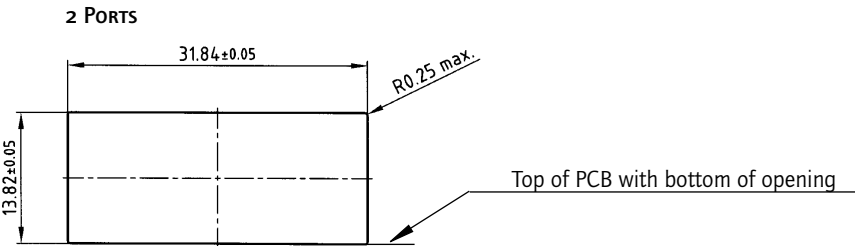
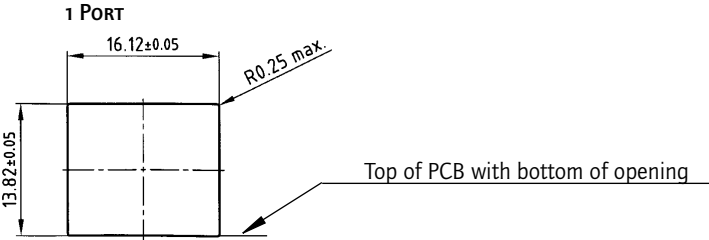
Schematic of magnetic Circuit with Tx/Rx = 1:1/1:1 or Tx/Rx = 1:1.414/1:1 - Turns Ratio, additional shount Chok, 4x0,75Ω Terminal Resistors - 1000pF/2kv Capacitor and LEDs (Optional)



Schematic of magnetic Circuit with Tx/Rx = 1:1/1:1 or Tx/Rx = 1:1.414/1:1 - Turns Ratio, additional 4x0,75Ω Terminal Resistors - 1000pF/2kv Capacitor and LEDs (Optional).



RECOMMENDED PANEL CUT-OUT



[illegible]

Technical drawing of a mechanical part, likely a bracket or plate, showing dimensions in millimeters. The drawing includes a top view and a side view. Key dimensions include overall width 3122, overall height 24.9, and various internal features like holes and slots with specified tolerances.

Top View Dimensions:

- Overall width: 3122
- Overall height: 24.9
- Top horizontal segments: 27.52 \pm 0.1, 25.9 \pm 0.1, 254 \pm 0.1, 254 \pm 0.1
- Left vertical segments: 9.2, 6.92
- Bottom horizontal segments: 3.7 \pm 0.1, 11.53 \pm 0.1, 254 \pm 0.1, 127 \pm 0.1, 8.89 \pm 0.1, 8.89 \pm 0.1, 23.5 \pm 0.1
- Right vertical segments: 157.13 \pm 0.1, 3.35 \pm 0.1
- Internal features: 1.72 \pm 0.1, 1.72 \pm 0.1, 1.26 \pm 0.1, 1.26 \pm 0.1, 1.82 \pm 0.1, 1.82 \pm 0.1, 0.89 \pm 0.2 (16x), 0.67, 2.54 \pm 0.1

Side View Dimensions:

- Overall height: 24.9
- Top horizontal segments: 27.52 \pm 0.1, 25.9 \pm 0.1, 254 \pm 0.1, 254 \pm 0.1
- Left vertical segments: 9.2, 6.92
- Bottom horizontal segments: 3.7 \pm 0.1, 11.53 \pm 0.1, 254 \pm 0.1, 127 \pm 0.1, 8.89 \pm 0.1, 8.89 \pm 0.1, 23.5 \pm 0.1
- Right vertical segments: 157.13 \pm 0.1, 3.35 \pm 0.1
- Internal features: 1.72 \pm 0.1, 1.72 \pm 0.1, 1.26 \pm 0.1, 1.26 \pm 0.1, 1.82 \pm 0.1, 1.82 \pm 0.1, 0.89 \pm 0.2 (16x), 0.67, 2.54 \pm 0.1

[illegible]



SOLDER PROFILE

Connector Type	Preheating		Solder terminal dipping parameters	
	max. Temperature	Duration	max. Solder bath Temperature	max. Terminal Immersion Time
Filter D-SUB	100°C	30s	260°C	5s
Combo D-SUB Filter	120°C	120s	260°C	5s
Filter D-SUB Water Resistant	100°C	30s	240°C	5s
Combo D-SUB Water Resistant	120°C	120s	240°C	5s
D-SUB Water Resistant	120°C	120s	240°C	5s
D-SUB Solid Body Type Water Resistant	150°C	180s	265°C	8s
RJ45 Modular Jack Filtered	150°C	180s	265°C	8s
Filter Plates	150°C	180s	265°C	8s

Recommended wave-solder parameters for CONEC connectors.

Mouser Electronics

Authorized Distributor

Click to View Pricing, Inventory, Delivery & Lifecycle Information:

[CONEC:](#)

[RJ45TJS11AC010X](#)