

LC-FILTER D-SUB ADAPTER

Socket connector / Plug connector – Precision machined contacts – Full Metal



RoHS compliant – CSA listed, File No.: LR 115000-1 – UL listed, File No.: E202784

DESCRIPTION

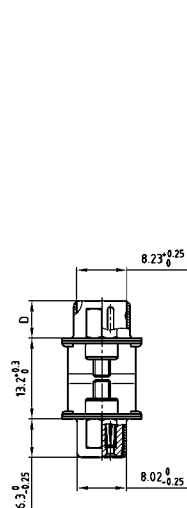
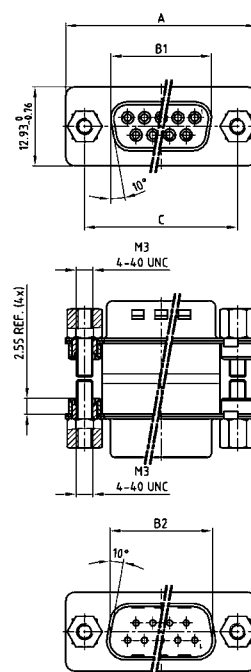
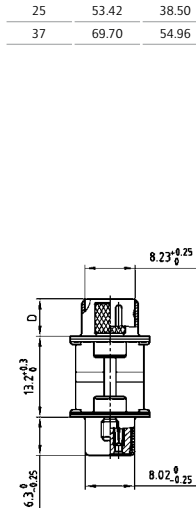
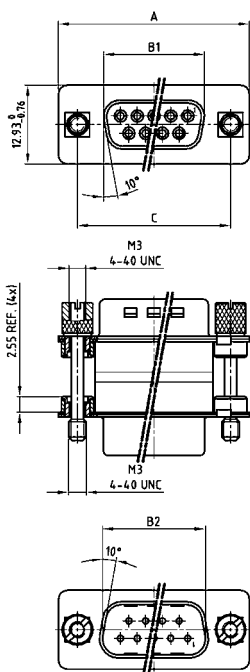
- Mounting styles:
 - with 4-40 UNC or M3 jack screw
 - with 4-40 UNC or M3 hex bolt
- Quality class 3 (also available in quality class 1)
- Shell: Steel tin plated

PRODUCT DRAWING

Version with jack screw

No. of pos.	A -0.76	B1 -0.25	B2 +0.25	C	D -0.3
09	31.19	16.46	16.79	25.00 $^{+0.12}_{-0.13}$	6.10
15	39.52	24.79	25.12	33.30 $^{+0.15}_{-0.10}$	6.12
25	53.42	38.50	38.84	47.04 ± 0.13	5.99
37	69.70	54.96	55.30	63.50 ± 0.13	5.99

Version with hex bolt



ORDER DATA

Capacitance 180 pF

SOCKET CONNECTOR / PLUG CONNECTOR WITH JACK SCREW		
No. of pos.	Mounting style	Part Number
09	4-40 UNC Jack screw	243 A 12800 X
15	4-40 UNC Jack screw	243 A 12810 X
25	4-40 UNC Jack screw	243 A 12820 X
37	4-40 UNC Jack screw	243 A 12830 X
09	M3 Jack screw	243 A 12960 X
15	M3 Jack screw	243 A 12970 X
25	M3 Jack screw	243 A 12980 X
37	M3 Jack screw	243 A 12990 X

SOCKET CONNECTOR / PLUG CONNECTOR WITH HEX BOLT		
No. of pos.	Mounting style	Part Number
09	4-40 UNC Hex bolt	243 A 13440 X
15	4-40 UNC Hex bolt	243 A 13450 X
25	4-40 UNC Hex bolt	243 A 13460 X
37	4-40 UNC Hex bolt	243 A 13470 X
09	M3 Hex bolt	243 A 13600 X
15	M3 Hex bolt	243 A 13610 X
25	M3 Hex bolt	243 A 13620 X
37	M3 Hex bolt	243 A 13630 X

LC-FILTER D-SUB ADAPTER

Socket connector / Plug connector – Precision machined contacts – Full Metal

ORDER DATA

Capacitance 370 pF

SOCKET CONNECTOR / PLUG CONNECTOR WITH JACK SCREW			SOCKET CONNECTOR / PLUG CONNECTOR WITH HEX BOLT		
No. of pos.	Mounting style	Part Number	No. of pos.	Mounting style	Part Number
09	4-40 UNC Jack screw	243 A 12840 X	09	4-40 UNC Hex bolt	243 A 13480 X
15	4-40 UNC Jack screw	243 A 12850 X	15	4-40 UNC Hex bolt	243 A 13490 X
25	4-40 UNC Jack screw	243 A 12860 X	25	4-40 UNC Hex bolt	243 A 13500 X
37	4-40 UNC Jack screw	243 A 12870 X	37	4-40 UNC Hex bolt	243 A 13510 X
09	M3 Jack screw	243 A 13000 X	09	M3 Hex bolt	243 A 13640 X
15	M3 Jack screw	243 A 13010 X	15	M3 Hex bolt	243 A 13650 X
25	M3 Jack screw	243 A 13020 X	25	M3 Hex bolt	243 A 13660 X
37	M3 Jack screw	243 A 13030 X	37	M3 Hex bolt	243 A 13670 X

Capacitance 830 pF

SOCKET CONNECTOR / PLUG CONNECTOR WITH JACK SCREW			SOCKET CONNECTOR / PLUG CONNECTOR WITH HEX BOLT		
No. of pos.	Mounting style	Part Number	No. of pos.	Mounting style	Part Number
09	4-40 UNC Jack screw	243 A 12880 X	09	4-40 UNC Hex bolt	243 A 13520 X
15	4-40 UNC Jack screw	243 A 12890 X	15	4-40 UNC Hex bolt	243 A 13530 X
25	4-40 UNC Jack screw	243 A 12900 X	25	4-40 UNC Hex bolt	243 A 13540 X
37	4-40 UNC Jack screw	243 A 12910 X	37	4-40 UNC Hex bolt	243 A 13550 X
09	M3 Jack screw	243 A 13040 X	09	M3 Hex bolt	243 A 13680 X
15	M3 Jack screw	243 A 13050 X	15	M3 Hex bolt	243 A 13690 X
25	M3 Jack screw	243 A 13060 X	25	M3 Hex bolt	243 A 13700 X
37	M3 Jack screw	243 A 13070 X	37	M3 Hex bolt	243 A 13710 X

Capacitance 1300 pF

SOCKET CONNECTOR / PLUG CONNECTOR WITH JACK SCREW			SOCKET CONNECTOR / PLUG CONNECTOR WITH HEX BOLT		
No. of pos.	Mounting style	Part Number	No. of pos.	Mounting style	Part Number
09	4-40 UNC Jack screw	243 A 12920 X	09	4-40 UNC Hex bolt	243 A 13560 X
15	4-40 UNC Jack screw	243 A 12930 X	15	4-40 UNC Hex bolt	243 A 13570 X
25	4-40 UNC Jack screw	243 A 12940 X	25	4-40 UNC Hex bolt	243 A 13580 X
37	4-40 UNC Jack screw	243 A 12950 X	37	4-40 UNC Hex bolt	243 A 13590 X
09	M3 Jack screw	243 A 13080 X	09	M3 Hex bolt	243 A 13720 X
15	M3 Jack screw	243 A 13090 X	15	M3 Hex bolt	243 A 13730 X
25	M3 Jack screw	243 A 13100 X	25	M3 Hex bolt	243 A 13740 X
37	M3 Jack screw	243 A 13110 X	37	M3 Hex bolt	243 A 13750 X

Mouser Electronics

Authorized Distributor

Click to View Pricing, Inventory, Delivery & Lifecycle Information:

CONEC:

[243A13580X](#) [243A13050X](#) [243A13630X](#) [243A12800X](#) [243A12810X](#) [243A12880X](#) [243A12890X](#) [243A12960X](#)
[243A13470X](#) [243A13480X](#) [243A13560X](#) [243A13640X](#) [243A12830X](#) [243A12900X](#) [243A13070X](#) [243A13740X](#)
[243A13000X](#) [243A13010X](#) [243A13090X](#) [243A13100X](#) [243A13510X](#) [243A13520X](#) [243A12860X](#) [243A12940X](#)
[243A12950X](#) [243A13040X](#) [243A13610X](#) [243A13620X](#) [243A13690X](#) [243A12970X](#) [243A13460X](#) [243A13550X](#)
[243A13720X](#) [243A13730X](#) [243A12870X](#) [243A13530X](#) [243A13700X](#) [243A13600X](#) [243A13030X](#) [243A13110X](#)
[243A13440X](#) [243A13540X](#) [243A13710X](#) [243A12910X](#) [243A13080X](#) [243A13490X](#) [243A13570X](#) [243A12840X](#)
[243A12850X](#) [243A12920X](#) [243A12930X](#) [243A13590X](#) [243A13680X](#) [243A12820X](#) [243A12980X](#) [243A12990X](#)
[243A13500X](#) [243A13650X](#) [243A13660X](#)