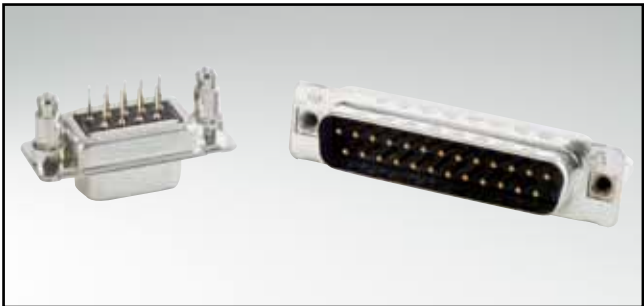


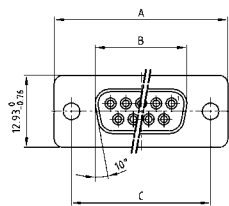
C-FILTER D-SUB STANDARD

Solder pin – Straight – Precision machined contacts



RoHS compliant – CSA listed, File No.: LR 115000-1 – UL listed, File No.: E202784

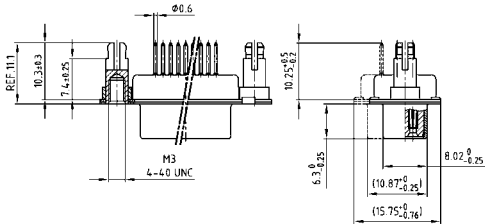
SOCKET CONNECTOR



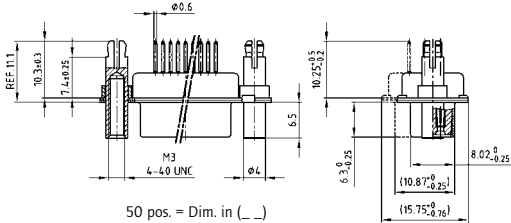
No. of pos.	A -0.76	B -0.25	C
09	31.19	16.46	25.00 ^{+0.12} _{-0.13}
15	39.52	24.79	33.30 ^{+0.15} _{-0.10}
25	53.42	38.50	47.04 ^{+0.13} _{-0.10}
37	69.70	54.96	63.50 ^{+0.13} _{-0.10}
50	67.31	52.55	61.10 ^{+0.14} _{-0.11}

PCB layout: Kat1kFUA

Mounting style: Threaded rear spacer with PCB clip



Mounting style: Front and threaded rear spacer with PCB clip

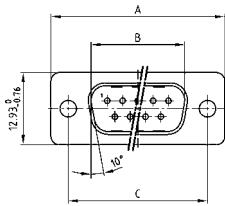


50 pos. = Dim. in (_)

DESCRIPTION

- Mounting styles:
 - with 4-40 UNC or M3 threaded rear spacer with PCB clip
 - with 4-40 UNC or M3 front and threaded rear spacer with PCB clip
- Quality class 3 (also available in quality class 1)
- Shell: Steel tin plated (brass tin plated on request)

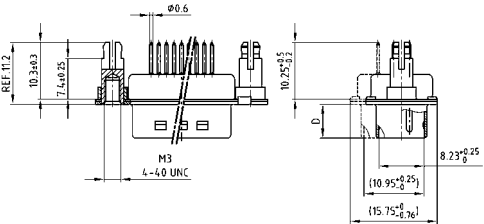
PLUG CONNECTOR



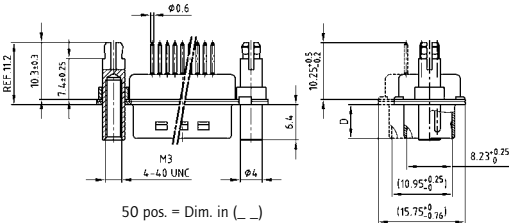
No. of pos.	A -0.76	B +0.25	C	D -0.3
09	31.19	16.79	25.00 ^{+0.12} _{-0.13}	6.12
15	39.52	25.12	33.30 ^{+0.15} _{-0.10}	6.12
25	53.42	38.84	47.04 ^{+0.13} _{-0.10}	5.99
37	69.70	55.30	63.50 ^{+0.13} _{-0.10}	5.99
50	67.31	52.68	61.10 ^{+0.14} _{-0.11}	5.99

PCB layout: Kat1kFUA

Mounting style: Threaded rear spacer with PCB clip



Mounting style: Front and threaded rear spacer with PCB clip



50 pos. = Dim. in (_)

ORDER DATA

Capacitance 180 pF

SOCKET CONNECTOR			PLUG CONNECTOR		
No. of pos.	Mounting style	Part Number	No. of pos.	Mounting style	Part Number
09	4-40 UNC Threaded rear spacer PCB clip	242 A 16460 X	09	4-40 UNC Threaded rear spacer PCB clip	241 A 19080 X
15	4-40 UNC Threaded rear spacer PCB clip	242 A 16470 X	15	4-40 UNC Threaded rear spacer PCB clip	241 A 19090 X
25	4-40 UNC Threaded rear spacer PCB clip	242 A 16480 X	25	4-40 UNC Threaded rear spacer PCB clip	241 A 19100 X
37	4-40 UNC Threaded rear spacer PCB clip	242 A 16490 X	37	4-40 UNC Threaded rear spacer PCB clip	241 A 19110 X
50	4-40 UNC Threaded rear spacer PCB clip	242 A 16500 X	50	4-40 UNC Threaded rear spacer PCB clip	241 A 19120 X
09	M3 Threaded rear spacer PCB clip	242 A 16510 X	09	M3 Threaded rear spacer PCB clip	241 A 19130 X
15	M3 Threaded rear spacer PCB clip	242 A 16520 X	15	M3 Threaded rear spacer PCB clip	241 A 19140 X
25	M3 Threaded rear spacer PCB clip	242 A 16530 X	25	M3 Threaded rear spacer PCB clip	241 A 19150 X
37	M3 Threaded rear spacer PCB clip	242 A 16540 X	37	M3 Threaded rear spacer PCB clip	241 A 19160 X
50	M3 Threaded rear spacer PCB clip	242 A 16550 X	50	M3 Threaded rear spacer PCB clip	241 A 19170 X
09	4-40 UNC Front / Threaded rear spacer PCB clip	242 A 16560 X	09	4-40 UNC Front / Threaded rear spacer PCB clip	241 A 19180 X
15	4-40 UNC Front / Threaded rear spacer PCB clip	242 A 16570 X	15	4-40 UNC Front / Threaded rear spacer PCB clip	241 A 19190 X
25	4-40 UNC Front / Threaded rear spacer PCB clip	242 A 16580 X	25	4-40 UNC Front / Threaded rear spacer PCB clip	241 A 19200 X
37	4-40 UNC Front / Threaded rear spacer PCB clip	242 A 16590 X	37	4-40 UNC Front / Threaded rear spacer PCB clip	241 A 19210 X
50	4-40 UNC Front / Threaded rear spacer PCB clip	242 A 16600 X	50	4-40 UNC Front / Threaded rear spacer PCB clip	241 A 19220 X
09	M3 Front / Threaded rear spacer PCB clip	242 A 16610 X	09	M3 Front / Threaded rear spacer PCB clip	241 A 19230 X
15	M3 Front / Threaded rear spacer PCB clip	242 A 16620 X	15	M3 Front / Threaded rear spacer PCB clip	241 A 19240 X
25	M3 Front / Threaded rear spacer PCB clip	242 A 16630 X	25	M3 Front / Threaded rear spacer PCB clip	241 A 19250 X
37	M3 Front / Threaded rear spacer PCB clip	242 A 16640 X	37	M3 Front / Threaded rear spacer PCB clip	241 A 19260 X
50	M3 Front / Threaded rear spacer PCB clip	242 A 16650 X	50	M3 Front / Threaded rear spacer PCB clip	241 A 19270 X

PCB clip .122" / 3.1 ± .004" / 0.10 mm hole diameter and .063" / 1.6 mm circuit board thickness

Mouser Electronics

Authorized Distributor

Click to View Pricing, Inventory, Delivery & Lifecycle Information:

CONEC:

<u>241A15440X</u>	<u>241A15270X</u>	<u>241A15600X</u>	<u>241A15160X</u>	<u>241A15330X</u>	<u>241A15310X</u>	<u>241A15260X</u>	<u>241A15580X</u>
<u>241A15670X</u>	<u>241A15660X</u>	<u>241A15590X</u>	<u>241A15100X</u>	<u>241A15280X</u>	<u>241A15470X</u>	<u>241A15550X</u>	<u>241A15390X</u>
<u>242A15220X</u>	<u>242A15290X</u>	<u>242A15300X</u>	<u>242A15310X</u>	<u>242A15470X</u>	<u>242A15560X</u>	<u>242A15570X</u>	<u>242A15190X</u>
<u>242A15060X</u>	<u>242A15080X</u>	<u>242A15160X</u>	<u>242A15230X</u>	<u>242A15330X</u>	<u>242A15490X</u>	<u>242A15500X</u>	<u>241A19170X</u>
<u>241A19250X</u>	<u>241A19110X</u>	<u>241A19120X</u>	<u>241A19220X</u>	<u>241A19230X</u>	<u>241A15130X</u>	<u>241A15220X</u>	<u>241A15380X</u>
<u>241A15540X</u>	<u>241A15630X</u>	<u>241A15640X</u>	<u>241A19090X</u>	<u>241A19100X</u>	<u>241A19210X</u>	<u>241A15210X</u>	<u>241A15460X</u>
<u>241A15420X</u>	<u>241A15430X</u>	<u>241A19200X</u>	<u>241A19150X</u>	<u>241A19160X</u>	<u>241A19130X</u>	<u>241A19140X</u>	<u>241A15560X</u>
<u>241A15650X</u>	<u>241A19180X</u>	<u>241A19190X</u>	<u>241A19270X</u>	<u>241A15290X</u>	<u>241A15300X</u>	<u>241A19080X</u>	<u>241A19240X</u>
<u>241A15120X</u>	<u>241A15490X</u>	<u>241A15190X</u>	<u>241A15350X</u>	<u>241A15610X</u>	<u>241A15200X</u>	<u>241A15360X</u>	<u>241A15450X</u>
<u>241A15530X</u>	<u>241A15620X</u>	<u>241A15500X</u>	<u>241A15680X</u>	<u>241A15250X</u>	<u>241A15340X</u>	<u>241A15510X</u>	<u>241A15370X</u>
<u>241A15520X</u>	<u>241A15150X</u>	<u>241A15230X</u>	<u>241A15320X</u>	<u>241A15400X</u>	<u>241A15240X</u>	<u>241A15410X</u>	<u>241A15480X</u>
<u>241A15570X</u>	<u>242A16650X</u>	<u>242A14990X</u>	<u>242A15150X</u>	<u>242A15240X</u>	<u>242A15320X</u>	<u>242A15410X</u>	<u>242A16580X</u>
<u>242A15000X</u>	<u>242A15090X</u>	<u>242A15260X</u>	<u>242A15340X</u>				