

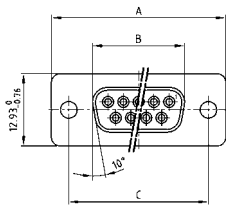
C-FILTER D-SUB STANDARD

Solder pin – Straight – Precision machined contacts



RoHS compliant – CSA listed, File No.: LR 115000-1 – UL listed, File No.: E202784

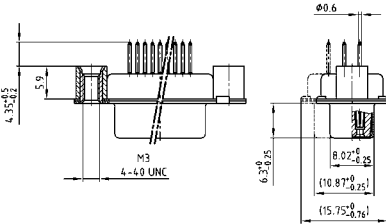
SOCKET CONNECTOR



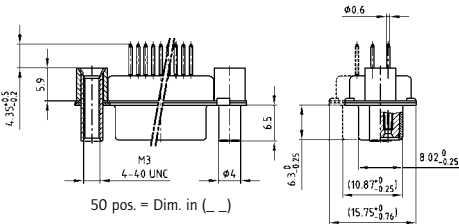
No. of pos.	A -0.76	B -0.25	C
09	31.19	16.46	25.00 ^{+0.12} _{-0.13}
15	39.52	24.79	33.30 ^{+0.15} _{-0.10}
25	53.42	38.50	47.04 ^{+0.13} _{-0.13}
37	69.70	54.96	63.50 ^{+0.13} _{-0.13}
50	67.31	52.55	61.10 ^{+0.14} _{-0.11}

PCB layout: Kat1kFUA

Mounting style: Threaded rear spacer



Mounting style: Threaded rear spacer, front spacer



ORDER DATA

Capacitance 180 pF

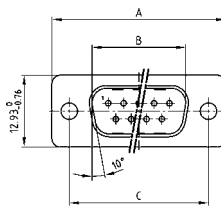
SOCKET CONNECTOR

No. of pos.	Mounting style	Part Number
09	4-40 UNC Threaded rear spacer	242 A 16210 X
15	4-40 UNC Threaded rear spacer	242 A 16220 X
25	4-40 UNC Threaded rear spacer	242 A 16230 X
37	4-40 UNC Threaded rear spacer	242 A 16240 X
50	4-40 UNC Threaded rear spacer	242 A 16250 X
09	M3 Threaded rear spacer	242 A 16260 X
15	M3 Threaded rear spacer	242 A 16270 X
25	M3 Threaded rear spacer	242 A 16280 X
37	M3 Threaded rear spacer	242 A 16290 X
50	M3 Threaded rear spacer	242 A 16300 X
09	4-40 UNC Front / Threaded rear spacer	242 A 16310 X
15	4-40 UNC Front / Threaded rear spacer	242 A 16320 X
25	4-40 UNC Front / Threaded rear spacer	242 A 16330 X
37	4-40 UNC Front / Threaded rear spacer	242 A 16340 X
50	4-40 UNC Front / Threaded rear spacer	242 A 16350 X
09	M3 Front / Threaded rear spacer	242 A 16360 X
15	M3 Front / Threaded rear spacer	242 A 16370 X
25	M3 Front / Threaded rear spacer	242 A 16380 X
37	M3 Front / Threaded rear spacer	242 A 16390 X
50	M3 Front / Threaded rear spacer	242 A 16400 X

DESCRIPTION

- Mounting styles:
 - with 4-40 UNC or M3 threaded rear spacer
 - with 4-40 UNC or M3 front and threaded rear spacer
- Quality class 3 (also available in quality class 1)
- Shell: Steel tin plated (brass tin plated on request)

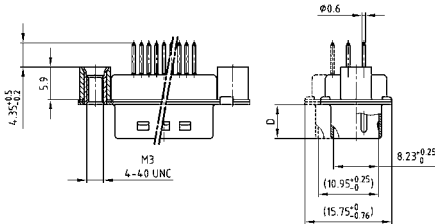
PLUG CONNECTOR



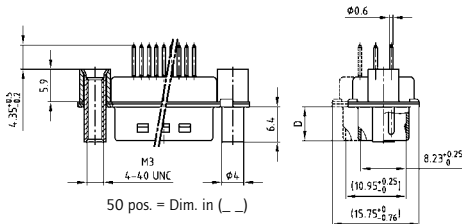
No. of pos.	A -0.76	B +0.25	C	D -0.3
09	31.19	16.79	25.00 ^{+0.12} _{-0.13}	6.12
15	39.52	25.12	33.30 ^{+0.15} _{-0.10}	6.12
25	53.42	38.84	47.04 ^{+0.13} _{-0.13}	5.99
37	69.70	55.30	63.50 ^{+0.13} _{-0.13}	5.99
50	67.31	52.68	61.10 ^{+0.14} _{-0.11}	5.99

PCB layout: Kat1kFUA

Mounting style: Threaded rear spacer



Mounting style: Threaded rear spacer, front spacer



PLUG CONNECTOR

No. of pos.	Mounting style	Part Number
09	4-40 UNC Threaded rear spacer	241 A 18830 X
15	4-40 UNC Threaded rear spacer	241 A 18840 X
25	4-40 UNC Threaded rear spacer	241 A 18850 X
37	4-40 UNC Threaded rear spacer	241 A 18860 X
50	4-40 UNC Threaded rear spacer	241 A 18870 X
09	M3 Threaded rear spacer	241 A 18880 X
15	M3 Threaded rear spacer	241 A 18890 X
25	M3 Threaded rear spacer	241 A 18900 X
37	M3 Threaded rear spacer	241 A 18910 X
50	M3 Threaded rear spacer	241 A 18920 X
09	4-40 UNC Front / Threaded rear spacer	241 A 18930 X
15	4-40 UNC Front / Threaded rear spacer	241 A 18940 X
25	4-40 UNC Front / Threaded rear spacer	241 A 18950 X
37	4-40 UNC Front / Threaded rear spacer	241 A 18960 X
50	4-40 UNC Front / Threaded rear spacer	241 A 18970 X
09	M3 Front / Threaded rear spacer	241 A 18980 X
15	M3 Front / Threaded rear spacer	241 A 18990 X
25	M3 Front / Threaded rear spacer	241 A 19000 X
37	M3 Front / Threaded rear spacer	241 A 19010 X
50	M3 Front / Threaded rear spacer	241 A 19020 X

Mouser Electronics

Authorized Distributor

Click to View Pricing, Inventory, Delivery & Lifecycle Information:

CONEC:

<u>241A10610X</u>	<u>242A10430X</u>	<u>241A15790X</u>	<u>241A10680X</u>	<u>241A10770X</u>	<u>241A10780X</u>	<u>241A10810X</u>	<u>241A10720X</u>
<u>241A10760X</u>	<u>241A10550X</u>	<u>241A10620X</u>	<u>241A10400X</u>	<u>241A10730X</u>	<u>241A10590X</u>	<u>241A10410X</u>	<u>241A10660X</u>
<u>241A10670X</u>	<u>241A10630X</u>	<u>241A10640X</u>	<u>242A16230X</u>	<u>242A16310X</u>	<u>242A16320X</u>	<u>242A16400X</u>	<u>242A15740X</u>
<u>242A15750X</u>	<u>242A16240X</u>	<u>242A15680X</u>	<u>242A15690X</u>	<u>242A15760X</u>	<u>242A15770X</u>	<u>242A16270X</u>	<u>242A16280X</u>
<u>242A16210X</u>	<u>242A16380X</u>	<u>242A15720X</u>	<u>242A15730X</u>	<u>242A16220X</u>	<u>242A16390X</u>	<u>242A16260X</u>	<u>242A16330X</u>
<u>242A16340X</u>	<u>242A10530X</u>	<u>242A10710X</u>	<u>242A10790X</u>	<u>242A15700X</u>	<u>242A16290X</u>	<u>242A10460X</u>	<u>242A10510X</u>
<u>242A10520X</u>	<u>242A10590X</u>	<u>242A10600X</u>	<u>242A10690X</u>	<u>242A10760X</u>	<u>242A16350X</u>	<u>242A16360X</u>	<u>242A10370X</u>
<u>242A10540X</u>	<u>242A10700X</u>	<u>242A10680X</u>	<u>242A10770X</u>	<u>242A10380X</u>	<u>242A10390X</u>	<u>242A10550X</u>	<u>242A10630X</u>
<u>242A10720X</u>	<u>242A15710X</u>	<u>242A15780X</u>	<u>242A16300X</u>	<u>242A16370X</u>	<u>242A10490X</u>	<u>242A10500X</u>	<u>242A10570X</u>
<u>242A10580X</u>	<u>242A10660X</u>	<u>242A10450X</u>	<u>242A10620X</u>	<u>242A10780X</u>	<u>242A10470X</u>	<u>242A10730X</u>	<u>242A10800X</u>
<u>242A10810X</u>	<u>242A10400X</u>	<u>242A10750X</u>	<u>242A10820X</u>	<u>242A10830X</u>	<u>242A10440X</u>	<u>242A10670X</u>	<u>242A10840X</u>
<u>242A10650X</u>	<u>242A16250X</u>	<u>242A10560X</u>	<u>241A18900X</u>	<u>241A18860X</u>	<u>241A18870X</u>	<u>241A18890X</u>	<u>241A10750X</u>
<u>241A18850X</u>	<u>241A18960X</u>	<u>241A15850X</u>	<u>241A18950X</u>				