

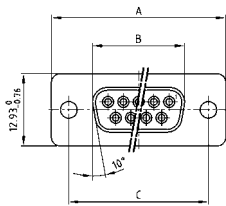
C-FILTER D-SUB STANDARD

Solder pin – Straight – Precision machined contacts



RoHS compliant – CSA listed, File No.: LR 115000-1 – UL listed, File No.: E202784

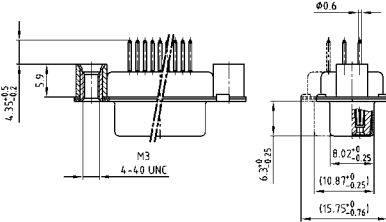
SOCKET CONNECTOR



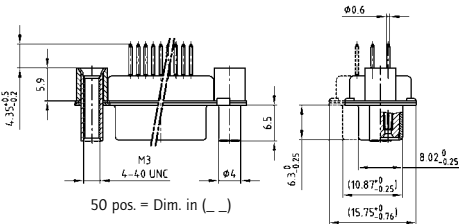
No. of pos.	A -0.76	B -0.25	C
09	31.19	16.46	25.00 <sup>+0.12</sup> <sub>-0.13</sub>
15	39.52	24.79	33.30 <sup>+0.15</sup> <sub>-0.10</sub>
25	53.42	38.50	47.04 <sup>+0.13</sup> <sub>-0.13</sub>
37	69.70	54.96	63.50 <sup>+0.13</sup> <sub>-0.13</sub>
50	67.31	52.55	61.10 <sup>+0.14</sup> <sub>-0.11</sub>

PCB layout: Kat1kFUA

Mounting style: Threaded rear spacer



Mounting style: Threaded rear spacer, front spacer



ORDER DATA

Capacitance 180 pF

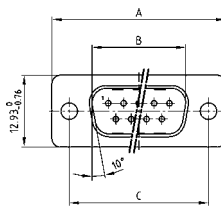
SOCKET CONNECTOR

No. of pos.	Mounting style	Part Number
09	4-40 UNC Threaded rear spacer	242 A 16210 X
15	4-40 UNC Threaded rear spacer	242 A 16220 X
25	4-40 UNC Threaded rear spacer	242 A 16230 X
37	4-40 UNC Threaded rear spacer	242 A 16240 X
50	4-40 UNC Threaded rear spacer	242 A 16250 X
09	M3 Threaded rear spacer	242 A 16260 X
15	M3 Threaded rear spacer	242 A 16270 X
25	M3 Threaded rear spacer	242 A 16280 X
37	M3 Threaded rear spacer	242 A 16290 X
50	M3 Threaded rear spacer	242 A 16300 X
09	4-40 UNC Front / Threaded rear spacer	242 A 16310 X
15	4-40 UNC Front / Threaded rear spacer	242 A 16320 X
25	4-40 UNC Front / Threaded rear spacer	242 A 16330 X
37	4-40 UNC Front / Threaded rear spacer	242 A 16340 X
50	4-40 UNC Front / Threaded rear spacer	242 A 16350 X
09	M3 Front / Threaded rear spacer	242 A 16360 X
15	M3 Front / Threaded rear spacer	242 A 16370 X
25	M3 Front / Threaded rear spacer	242 A 16380 X
37	M3 Front / Threaded rear spacer	242 A 16390 X
50	M3 Front / Threaded rear spacer	242 A 16400 X

DESCRIPTION

- Mounting styles:
  - with 4-40 UNC or M3 threaded rear spacer
  - with 4-40 UNC or M3 front and threaded rear spacer
- Quality class 3 (also available in quality class 1)
- Shell: Steel tin plated (brass tin plated on request)

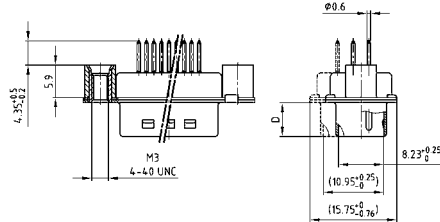
PLUG CONNECTOR



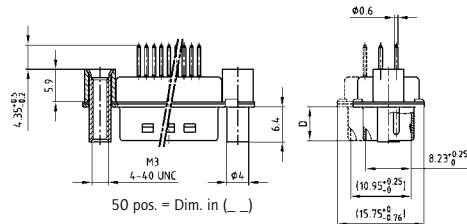
No. of pos.	A -0.76	B +0.25	C	D -0.3
09	31.19	16.79	25.00 <sup>+0.12</sup> <sub>-0.13</sub>	6.12
15	39.52	25.12	33.30 <sup>+0.15</sup> <sub>-0.10</sub>	6.12
25	53.42	38.84	47.04 <sup>+0.13</sup> <sub>-0.13</sub>	5.99
37	69.70	55.30	63.50 <sup>+0.13</sup> <sub>-0.13</sub>	5.99
50	67.31	52.68	61.10 <sup>+0.14</sup> <sub>-0.11</sub>	5.99

PCB layout: Kat1kFUA

Mounting style: Threaded rear spacer



Mounting style: Threaded rear spacer, front spacer



## C-FILTER D-SUB STANDARD

## Solder pin – Straight – Precision machined contacts

## ORDER DATA

Capacitance 370 pF

SOCKET CONNECTOR			PLUG CONNECTOR		
No. of pos.	Mounting style	Part Number	No. of pos.	Mounting style	Part Number
09	4-40 UNC Threaded rear spacer	242 A 10370 X	09	4-40 UNC Threaded rear spacer	241 A 10370 X
15	4-40 UNC Threaded rear spacer	242 A 10380 X	15	4-40 UNC Threaded rear spacer	241 A 10380 X
25	4-40 UNC Threaded rear spacer	242 A 10390 X	25	4-40 UNC Threaded rear spacer	241 A 10390 X
37	4-40 UNC Threaded rear spacer	242 A 10400 X	37	4-40 UNC Threaded rear spacer	241 A 10400 X
50	4-40 UNC Threaded rear spacer	242 A 15670 X	50	4-40 UNC Threaded rear spacer	241 A 15780 X
09	M3 Threaded rear spacer	242 A 10490 X	09	M3 Threaded rear spacer	241 A 10490 X
15	M3 Threaded rear spacer	242 A 10500 X	15	M3 Threaded rear spacer	241 A 10500 X
25	M3 Threaded rear spacer	242 A 10510 X	25	M3 Threaded rear spacer	241 A 10510 X
37	M3 Threaded rear spacer	242 A 10520 X	37	M3 Threaded rear spacer	241 A 10520 X
50	M3 Threaded rear spacer	242 A 15700 X	50	M3 Threaded rear spacer	241 A 15810 X
09	4-40 UNC Front / Threaded rear spacer	242 A 10610 X	09	4-40 UNC Front / Threaded rear spacer	241 A 10610 X
15	4-40 UNC Front / Threaded rear spacer	242 A 10620 X	15	4-40 UNC Front / Threaded rear spacer	241 A 10620 X
25	4-40 UNC Front / Threaded rear spacer	242 A 10630 X	25	4-40 UNC Front / Threaded rear spacer	241 A 10630 X
37	4-40 UNC Front / Threaded rear spacer	242 A 10640 X	37	4-40 UNC Front / Threaded rear spacer	241 A 10640 X
50	4-40 UNC Front / Threaded rear spacer	242 A 15730 X	50	4-40 UNC Front / Threaded rear spacer	241 A 15840 X
09	M3 Front / Threaded rear spacer	242 A 10730 X	09	M3 Front / Threaded rear spacer	241 A 10730 X
15	M3 Front / Threaded rear spacer	242 A 10740 X	15	M3 Front / Threaded rear spacer	241 A 10740 X
25	M3 Front / Threaded rear spacer	242 A 10750 X	25	M3 Front / Threaded rear spacer	241 A 10750 X
37	M3 Front / Threaded rear spacer	242 A 10760 X	37	M3 Front / Threaded rear spacer	241 A 10760 X
50	M3 Front / Threaded rear spacer	242 A 15760 X	50	M3 Front / Threaded rear spacer	241 A 15870 X

Capacitance 830 pF

Socket Connector			Plug Connector		
No. of pos.	Mounting style	Part Number	No. of pos.	Mounting style	Part Number
09	4-40 UNC Threaded rear spacer	242 A 10450 X	09	4-40 UNC Threaded rear spacer	241 A 10450 X
15	4-40 UNC Threaded rear spacer	242 A 10460 X	15	4-40 UNC Threaded rear spacer	241 A 10460 X
25	4-40 UNC Threaded rear spacer	242 A 10470 X	25	4-40 UNC Threaded rear spacer	241 A 10470 X
37	4-40 UNC Threaded rear spacer	242 A 10480 X	37	4-40 UNC Threaded rear spacer	241 A 10480 X
50	4-40 UNC Threaded rear spacer	242 A 15690 X	50	4-40 UNC Threaded rear spacer	241 A 15800 X
09	M3 Threaded rear spacer	242 A 10570 X	09	M3 Threaded rear spacer	241 A 10570 X
15	M3 Threaded rear spacer	242 A 10580 X	15	M3 Threaded rear spacer	241 A 10580 X
25	M3 Threaded rear spacer	242 A 10590 X	25	M3 Threaded rear spacer	241 A 10590 X
37	M3 Threaded rear spacer	242 A 10600 X	37	M3 Threaded rear spacer	241 A 10600 X
50	M3 Threaded rear spacer	242 A 15720 X	50	M3 Threaded rear spacer	241 A 15830 X
09	4-40 UNC Front / Threaded rear spacer	242 A 10690 X	09	4-40 UNC Front / Threaded rear spacer	241 A 10690 X
15	4-40 UNC Front / Threaded rear spacer	242 A 10700 X	15	4-40 UNC Front / Threaded rear spacer	241 A 10700 X
25	4-40 UNC Front / Threaded rear spacer	242 A 10710 X	25	4-40 UNC Front / Threaded rear spacer	241 A 10710 X
37	4-40 UNC Front / Threaded rear spacer	242 A 10720 X	37	4-40 UNC Front / Threaded rear spacer	241 A 10720 X
50	4-40 UNC Front / Threaded rear spacer	242 A 15750 X	50	4-40 UNC Front / Threaded rear spacer	241 A 15860 X
09	M3 Front / Threaded rear spacer	242 A 10810 X	09	M3 Front / Threaded rear spacer	241 A 10810 X
15	M3 Front / Threaded rear spacer	242 A 10820 X	15	M3 Front / Threaded rear spacer	241 A 10820 X
25	M3 Front / Threaded rear spacer	242 A 10830 X	25	M3 Front / Threaded rear spacer	241 A 10830 X
37	M3 Front / Threaded rear spacer	242 A 10840 X	37	M3 Front / Threaded rear spacer	241 A 10840 X
50	M3 Front / Threaded rear spacer	242 A 15780 X	50	M3 Front / Threaded rear spacer	241 A 15890 X

Capacitance 1300 pF

SOCKET CONNECTOR			PLUG CONNECTOR		
No. of pos.	Mounting style	Part Number	No. of pos.	Mounting style	Part Number
09	4-40 UNC Threaded rear spacer	242 A 10410 X	09	4-40 UNC Threaded rear spacer	241 A 10410 X
15	4-40 UNC Threaded rear spacer	242 A 10420 X	15	4-40 UNC Threaded rear spacer	241 A 10420 X
25	4-40 UNC Threaded rear spacer	242 A 10430 X	25	4-40 UNC Threaded rear spacer	241 A 10430 X
37	4-40 UNC Threaded rear spacer	242 A 10440 X	37	4-40 UNC Threaded rear spacer	241 A 10440 X
50	4-40 UNC Threaded rear spacer	242 A 15680 X	50	4-40 UNC Threaded rear spacer	241 A 15790 X
09	M3 Threaded rear spacer	242 A 10530 X	09	M3 Threaded rear spacer	241 A 10530 X
15	M3 Threaded rear spacer	242 A 10540 X	15	M3 Threaded rear spacer	241 A 10540 X
25	M3 Threaded rear spacer	242 A 10550 X	25	M3 Threaded rear spacer	241 A 10550 X
37	M3 Threaded rear spacer	242 A 10560 X	37	M3 Threaded rear spacer	241 A 10560 X
50	M3 Threaded rear spacer	242 A 15710 X	50	M3 Threaded rear spacer	241 A 15820 X
09	4-40 UNC Front / Threaded rear spacer	242 A 10650 X	09	4-40 UNC Front / Threaded rear spacer	241 A 10650 X
15	4-40 UNC Front / Threaded rear spacer	242 A 10660 X	15	4-40 UNC Front / Threaded rear spacer	241 A 10660 X
25	4-40 UNC Front / Threaded rear spacer	242 A 10670 X	25	4-40 UNC Front / Threaded rear spacer	241 A 10670 X
37	4-40 UNC Front / Threaded rear spacer	242 A 10680 X	37	4-40 UNC Front / Threaded rear spacer	241 A 10680 X
50	4-40 UNC Front / Threaded rear spacer	242 A 15740 X	50	4-40 UNC Front / Threaded rear spacer	241 A 15850 X
09	M3 Front / Threaded rear spacer	242 A 10770 X	09	M3 Front / Threaded rear spacer	241 A 10770 X
15	M3 Front / Threaded rear spacer	242 A 10780 X	15	M3 Front / Threaded rear spacer	241 A 10780 X
25	M3 Front / Threaded rear spacer	242 A 10790 X	25	M3 Front / Threaded rear spacer	241 A 10790 X
37	M3 Front / Threaded rear spacer	242 A 10800 X	37	M3 Front / Threaded rear spacer	241 A 10800 X
50	M3 Front / Threaded rear spacer	242 A 15770 X	50	M3 Front / Threaded rear spacer	241 A 15880 X

# Mouser Electronics

Authorized Distributor

Click to View Pricing, Inventory, Delivery & Lifecycle Information:

## CONEC:

<a href="#"><u>241A10610X</u></a>	<a href="#"><u>242A10430X</u></a>	<a href="#"><u>241A15790X</u></a>	<a href="#"><u>241A10680X</u></a>	<a href="#"><u>241A10770X</u></a>	<a href="#"><u>241A10780X</u></a>	<a href="#"><u>241A10810X</u></a>	<a href="#"><u>241A10720X</u></a>
<a href="#"><u>241A10760X</u></a>	<a href="#"><u>241A10550X</u></a>	<a href="#"><u>241A10620X</u></a>	<a href="#"><u>241A10400X</u></a>	<a href="#"><u>241A10730X</u></a>	<a href="#"><u>241A10590X</u></a>	<a href="#"><u>241A10410X</u></a>	<a href="#"><u>241A10660X</u></a>
<a href="#"><u>241A10670X</u></a>	<a href="#"><u>241A10630X</u></a>	<a href="#"><u>241A10640X</u></a>	<a href="#"><u>242A16230X</u></a>	<a href="#"><u>242A16310X</u></a>	<a href="#"><u>242A16320X</u></a>	<a href="#"><u>242A16400X</u></a>	<a href="#"><u>242A15740X</u></a>
<a href="#"><u>242A15750X</u></a>	<a href="#"><u>242A16240X</u></a>	<a href="#"><u>242A15680X</u></a>	<a href="#"><u>242A15690X</u></a>	<a href="#"><u>242A15760X</u></a>	<a href="#"><u>242A15770X</u></a>	<a href="#"><u>242A16270X</u></a>	<a href="#"><u>242A16280X</u></a>
<a href="#"><u>242A16210X</u></a>	<a href="#"><u>242A16380X</u></a>	<a href="#"><u>242A15720X</u></a>	<a href="#"><u>242A15730X</u></a>	<a href="#"><u>242A16220X</u></a>	<a href="#"><u>242A16390X</u></a>	<a href="#"><u>242A16260X</u></a>	<a href="#"><u>242A16330X</u></a>
<a href="#"><u>242A16340X</u></a>	<a href="#"><u>242A10530X</u></a>	<a href="#"><u>242A10710X</u></a>	<a href="#"><u>242A10790X</u></a>	<a href="#"><u>242A15700X</u></a>	<a href="#"><u>242A16290X</u></a>	<a href="#"><u>242A10460X</u></a>	<a href="#"><u>242A10510X</u></a>
<a href="#"><u>242A10520X</u></a>	<a href="#"><u>242A10590X</u></a>	<a href="#"><u>242A10600X</u></a>	<a href="#"><u>242A10690X</u></a>	<a href="#"><u>242A10760X</u></a>	<a href="#"><u>242A16350X</u></a>	<a href="#"><u>242A16360X</u></a>	<a href="#"><u>242A10370X</u></a>
<a href="#"><u>242A10540X</u></a>	<a href="#"><u>242A10700X</u></a>	<a href="#"><u>242A10680X</u></a>	<a href="#"><u>242A10770X</u></a>	<a href="#"><u>242A10380X</u></a>	<a href="#"><u>242A10390X</u></a>	<a href="#"><u>242A10550X</u></a>	<a href="#"><u>242A10630X</u></a>
<a href="#"><u>242A10720X</u></a>	<a href="#"><u>242A15710X</u></a>	<a href="#"><u>242A15780X</u></a>	<a href="#"><u>242A16300X</u></a>	<a href="#"><u>242A16370X</u></a>	<a href="#"><u>242A10490X</u></a>	<a href="#"><u>242A10500X</u></a>	<a href="#"><u>242A10570X</u></a>
<a href="#"><u>242A10580X</u></a>	<a href="#"><u>242A10660X</u></a>	<a href="#"><u>242A10450X</u></a>	<a href="#"><u>242A10620X</u></a>	<a href="#"><u>242A10780X</u></a>	<a href="#"><u>242A10470X</u></a>	<a href="#"><u>242A10730X</u></a>	<a href="#"><u>242A10800X</u></a>
<a href="#"><u>242A10810X</u></a>	<a href="#"><u>242A10400X</u></a>	<a href="#"><u>242A10750X</u></a>	<a href="#"><u>242A10820X</u></a>	<a href="#"><u>242A10830X</u></a>	<a href="#"><u>242A10440X</u></a>	<a href="#"><u>242A10670X</u></a>	<a href="#"><u>242A10840X</u></a>
<a href="#"><u>242A10650X</u></a>	<a href="#"><u>242A16250X</u></a>	<a href="#"><u>242A10560X</u></a>	<a href="#"><u>241A18900X</u></a>	<a href="#"><u>241A18860X</u></a>	<a href="#"><u>241A18870X</u></a>	<a href="#"><u>241A18890X</u></a>	<a href="#"><u>241A10750X</u></a>
<a href="#"><u>241A18850X</u></a>	<a href="#"><u>241A18960X</u></a>	<a href="#"><u>241A15850X</u></a>	<a href="#"><u>241A18950X</u></a>				