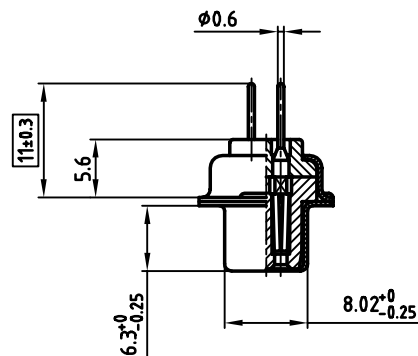
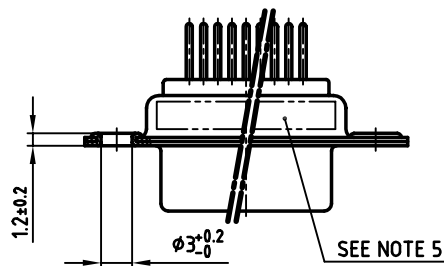
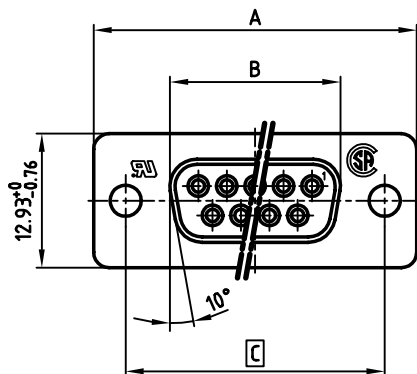


used for: D-SUB





No. of pos.	A -0.76	B -0.25	C	Part No.
9	31.19	16.46	25.00 $\begin{smallmatrix} -0.12 \\ -0.13 \end{smallmatrix}$	162A10069X
15	39.52	24.79	33.30 $\begin{smallmatrix} -0.15 \\ -0.1 \end{smallmatrix}$	162A10079X
25	53.42	38.50	47.04 ± 0.13	162A10089X
37	69.70	54.96	63.50 ± 0.13	162A10099X

NOTES:

- METALSHELLS: STEEL; 315µm YELLOWCHROME OVER 120µ" ZINC
- INSULATORS: PBT GF UL 94 V-0, BLACK
- CONTACTS: COPPER ALLOY
PLATING: min. 8µ" HARD GOLD OVER min. 50µ" NICKEL
- P.C.B. HOLE DRILLINGS ON DRAWING NO.: 16K11IUA
- CONNECTOR IS PART MARKED: **PART-NO. CONEC Y/WW**
- = CRITICAL DIMENSION

THIS DRAWING MAY NOT BE COPIED OR REPRODUCED IN ANY WAY, AND MAY NOT BE PASSED ON TO A THIRD PARTY WITHOUT WRITTEN PERMISSION. OWNERSHIP AND COPYRIGHT OF CONEC GmbH DO NOT ALTER CAD DRAWING BY HAND

rev.	description	date	name

tolerance		
2002	date	name
drawn	28.08.	Parei
appd.	28.08.	Resonnek
norm	DIN 41652	
d-old		
		

scale:		2:1	
material:		SEE NOTES	
title:			
D-SUB FEMALE			
9-37pos. SOLDER PIN STRAIGHT			
dwg no:		AutoCAD 2000	DIN-A
16K1A741			3
			sh: 1/1
part no:		SEE TABLE	

Mouser Electronics

Authorized Distributor

Click to View Pricing, Inventory, Delivery & Lifecycle Information:

[CONEC:](#)

[162A10079X](#)