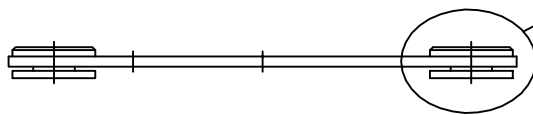
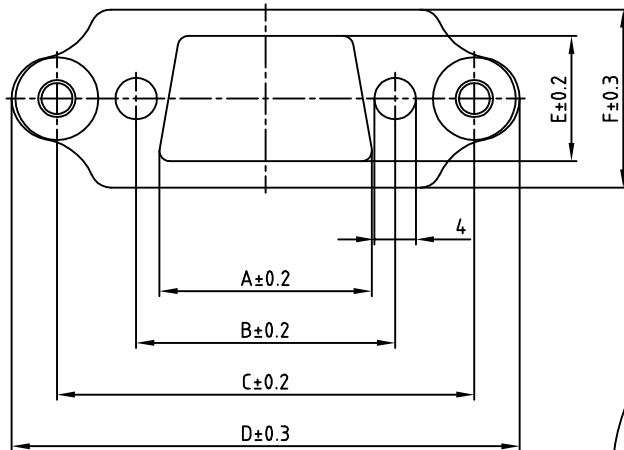
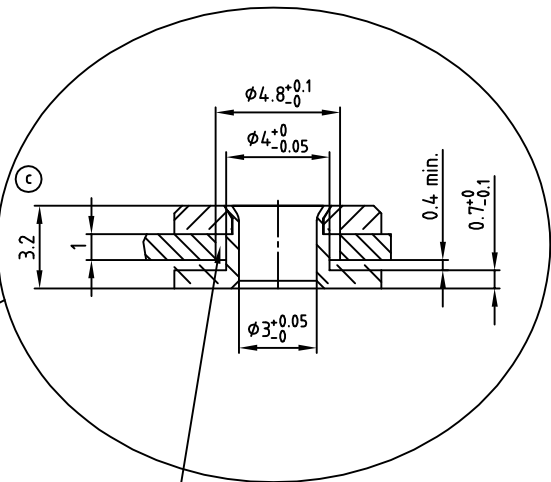


used for: D-SUB



the radius movement 0.8-0.95mm



No. of pos.	A ± 0.2	B ± 0.2	C ± 0.2	D ± 0.3	E ± 0.2	F ± 0.3	Part NO.
9	20.50	24.99	40.28	49.02	12.10	17.20	160X10889X
15	28.80	33.32	48.62	57.35	12.10	17.20	160X10899X
25	42.50	47.04	62.51	71.25	12.10	17.20	160X10909X
37	59.10	63.50	78.79	87.53	12.10	17.20	160X10919X
50	56.30	61.11	76.40	85.14	14.80	20.04	160X10929X

Directive 2002/95/EC
RoHS
Compliant

- ⑥ NOTES:
1. FRAME
MATERIAL: STEEL
FINISH: NICKEL PLATED
 2. FLOAT-BUSHING
MATERIAL: COPPER ALLOY
FINISH: NICKEL PLATED

APPROVAL # FREIGABE # DEBLOCAGE # AUTORIZACION # APPROVAL	APPROVAL # FREIGABE # DEBLOCAGE # AUTORIZACION # APPROVAL
CUSTOMER APPROVAL DATE:	
NAME:	TITLE:
COMPANY NAME:	
APPROVAL # FREIGABE # DEBLOCAGE # AUTORIZACION # APPROVAL	

THIS DRAWING MAY NOT BE COPIED OR
REPRODUCED IN ANY WAY, AND MAY NOT
BE PASSED ON TO A THIRD PARTY, WITHOUT
WRITTEN PERMISSION.
OWNERSHIP AND COPYRIGHT OF CONEC GmbH
DO NOT ALTER CAD DRAWING BY HAND

rev.	description	date	name
1 x c	Ä 3414	31.08.09	Sonne
1 x b	Ä 2478	05.04.06	HS

tolerance	dim. in mm
2001	date
drawn	19.02.
appd.	19.02.
norm	Mickenbecker
d-old	

CONEC®

scale:	2:1 (5:1)
material:	SEE NOTES
title:	D-SUB FRAME WITH FLOAT MOUNT 9-50pos.
dwg no:	AutoCAD 2000
part no:	SEE TABLE

DIN-A
3
sh: 1/1

Mouser Electronics

Authorized Distributor

Click to View Pricing, Inventory, Delivery & Lifecycle Information:

[CONEC:](#)

[160X10929X](#)