

4

3

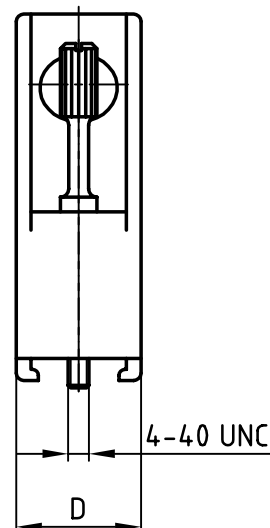
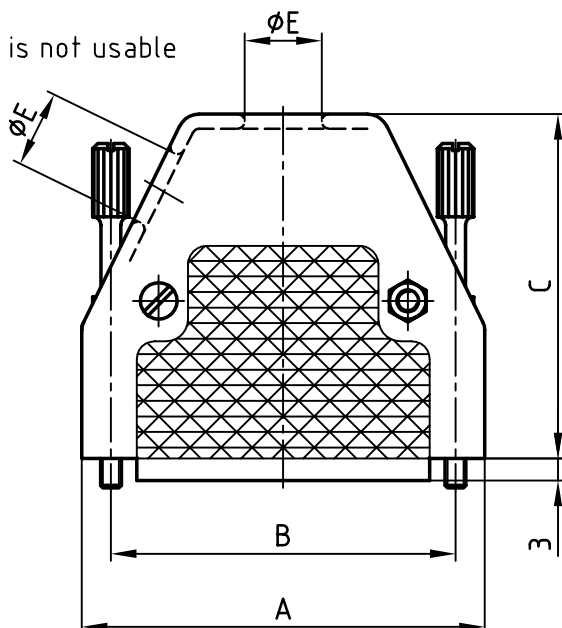
2

1

used for:

D-SUB

Side entry is not usable




No. of pos.	A	B	C	D	ϕE	Part No:
9	33.0	25.0	45.0	17.0	7.5	165X13079X
15	41.0	33.3	45.0	17.0	8.5	165X13089X
25	55.0	47.0	47.0	17.0	10.5	165X13099X
37	71.3	63.5	51.0	17.0	11.0	165X13109X
50	69.0	61.1	50.0	20.0	12.5	165X13119X

APPROVAL # FREIGABE # DEBLOCKAGE # AUTOR/ZACIEN # APPROVAL	
CUSTOMER APPROVAL DATE:	
NAME:	TITLE:
COMPANY NAME:	
APPROVAL # FREIGABE # DEBLOCKAGE # AUTOR/ZACIEN # APPROVAL	

NOTES:

1. HOOD: PA + GF
2. SCREWS: BRASS, NICKEL PLATED

THIS DRAWING MAY NOT BE COPIED OR
REPRODUCED IN ANY WAY, AND MAY NOT
BE PASSED ON TO A THIRD PARTY WITHOUT
WRITTEN PERMISSION.
OWNERSHIP AND COPYRIGHT OF CONEC GmbH
DO NOT ALTER CAD DRAWING BY HAND

				tolerance		dim. in mm
rev.	description	date	name	2003	date	
				drawn	22.05.	Mankopf
				appd.	22.05.	Kühle
				norm		
				d-old		
						

scale:	1:1	
material:	SEE NOTES	
title:	PLASTIC HOOD with straight cable entry with jack screws, 9 - 50 pos.	
dwg no:	AutoCAD 2000	DIN-A
	16K1A956	4
		sh: 1/1
part no:	SEE TABLE	

4

3

2

1

Mouser Electronics

Authorized Distributor

Click to View Pricing, Inventory, Delivery & Lifecycle Information:

CONEC:

[165X13089X](#) [165X13119X](#) [165X13079X](#)