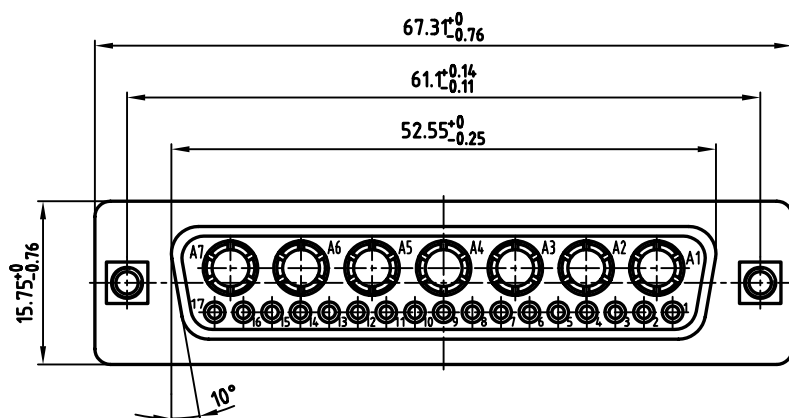
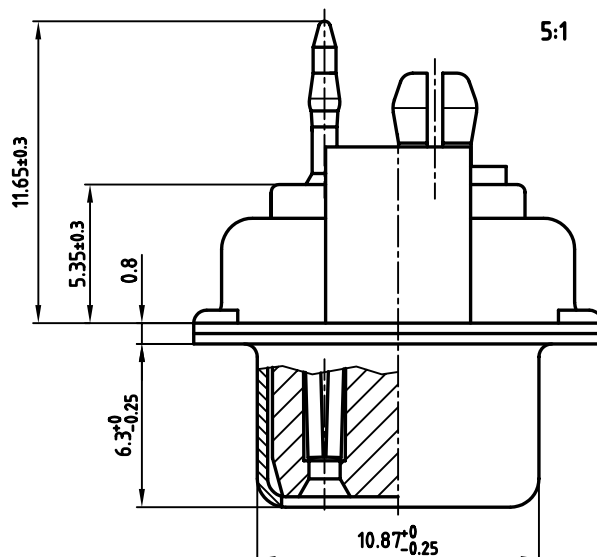


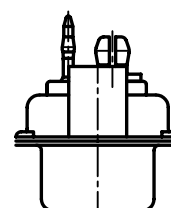
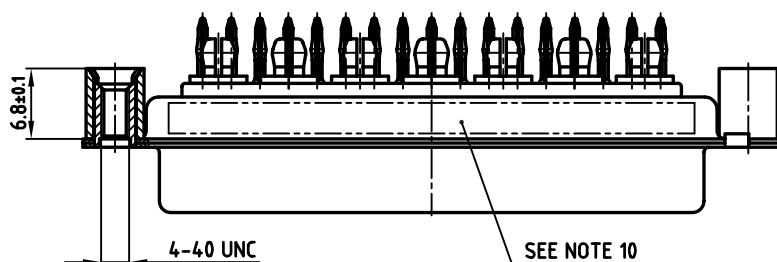
used for: D-SUB COMBINATION

#### NOTES:

1. METALSHELLS: STEEL; min. 315µin TIN OVER 40-80µin NICKEL
2. INSULATORS: PBT GF UL 94 V-0, GREEN
3. PRESS-FIT SIGNAL CONTACTS: COPPER ALLOY  
PLATING-MATING AREA+REAR SIDE:  
8µin HARD GOLD OVER min. 50µin NICKEL
4. HIGH POWER PRESS-FIT CONTACTS 40A: COPPER ALLOY  
PLATING-MATING AREA: 8µin HARD GOLD OVER min. 50µin NICKEL  
PLATING: PRESS-FIT AREA: TIN PLATED
5. P.C.B. THICKNESS: min. 2.2mm
6. THREADED REAR SPACER: COPPER ALLOY; min. 200µin TIN OVER 80µin NICKEL
7. SLEEVE: COPPER ALLOY; min. 200µin TIN OVER 80µin NICKEL
8. P.C.B. HOLE DRILLINGS ON SHEET 2
9. MAXIMUM TORQUE VALUE FOR THREAD: 6 in.LB
10. CONNECTOR IS PART MARKED: 3024W7SAP98A48A CONEC ABC



CONNECTOR SHOULD BE FIXED  
WITH SCREWS TO THE P.C.B.




Directive 2002/95/EC  
"RoHS"  
Compliant

APPROVAL * FREIGABE * DEBLOCAGE * AUTORIZACION * APPROVAL	
CUSTOMER APPROVAL DATE:	
NAME:	TITLE:
COMPANY NAME:	
APPROVAL * FREIGABE * DEBLOCAGE * AUTORIZACION * APPROVAL	

THIS DRAWING MAY NOT BE COPIED OR  
REPRODUCED IN ANY WAY, AND MAY NOT  
BE PASSED ON TO A THIRD PARTY WITHOUT  
WRITTEN PERMISSION.  
OWNERSHIP AND COPYRIGHT OF CONEC GmbH  
DO NOT ALTER CAD DRAWING BY HAND

rev.	description	date	name
a	Origin		

tolerance		 dim. in mm
2007	date	
drawn	26.02.	name
appd.	26.02.	Koch
norm		
d-old		

**CONEC**®

scale:	2:1 (5:1)
material:	SEE NOTES
title:	
D-SUB COMBINATION FEMALE	
24W7S PRESSFIT TYPE	
with threaded read spacer	
dwg no:	AutoCAD 2006
13K1A1982	
part no: 3024W7SAP98A48A	

DIN-A  
3  
sh:1/2

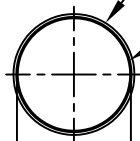
4

3

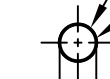
2

1

used for: D-SUB COMBINATION

Copper thickness  
25µm (1000µ") minimumTin thickness  
15µm (600µ") maximumFinished hole  
max.  $\phi 3.111$   
min.  $\phi 2.959$ 

X 5:1

Copper thickness  
25µm (1000µ") minimumTin thickness  
15µm (600µ") maximumFinished hole  
 $\phi 1^{+0.09}_{-0.06}$ 

Y 5:1

61.1±0.1

 $\phi 2.959-3.111$  (7x)

20.57±0.1

13.76±0.1

6.91±0.1

X

Y

A1

1.42±0.1

2.84±0.1

2.77±0.1

5.54±0.1

8.28±0.1

11.05±0.1

13.82±0.1

16.56±0.1

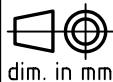
19.33±0.1

22.1±0.1

 $\phi 3.1 \pm 0.1$  (2x)

APPROVAL * FREIGABE * DEBLOCAGE * AUTORIZACION * APPROVAL	
CUSTOMER APPROVAL DATE:	
NAME:	TITLE:
COMPANY NAME:	
APPROVAL * FREIGABE * DEBLOCAGE * AUTORIZACION * APPROVAL	

tolerance



dim. in mm

scale: 2:1 (5:1)

material: SEE SHEET 1

title:

P.C.B. HOLE DRILLINGS

D-SUB COMBINATION FEMALE 24W7S PRESSFIT  
with threaded rear spacer

dwg no:

AutoCAD 2006

DIN-A

13K1A1982

4

sh:2/2

part no:

SEE SHEET 1

THIS DRAWING MAY NOT BE COPIED OR  
REPRODUCED IN ANY WAY, AND MAY NOT  
BE PASSED ON TO A THIRD PARTY WITHOUT  
WRITTEN PERMISSION.  
OWNERSHIP AND COPYRIGHT OF CONEC GmbH  
DO NOT ALTER CAD DRAWING BY HAND

rev.	description	date	name
a	Origin		

4

3

2

1

# Mouser Electronics

Authorized Distributor

Click to View Pricing, Inventory, Delivery & Lifecycle Information:

CONEC:

3024W7SAP98A48A