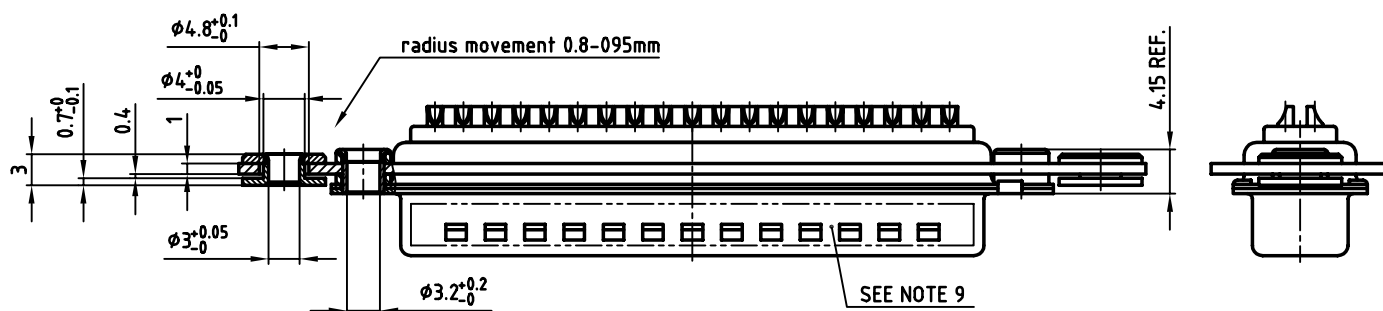
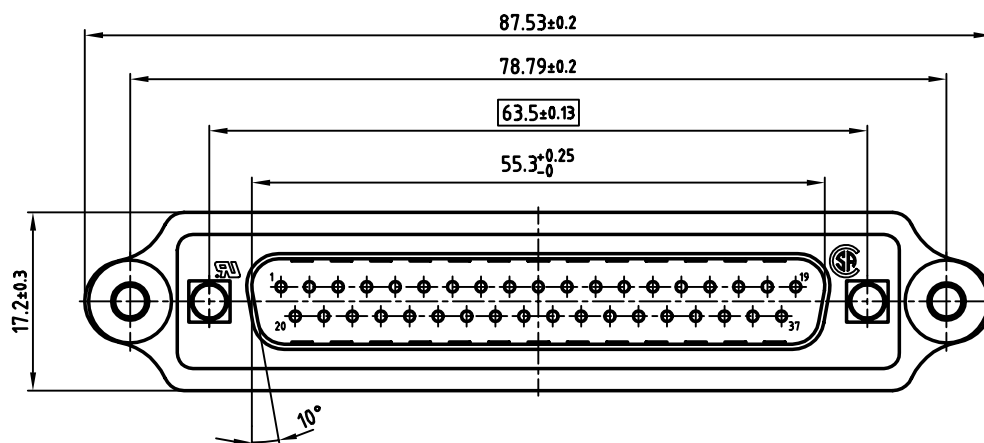
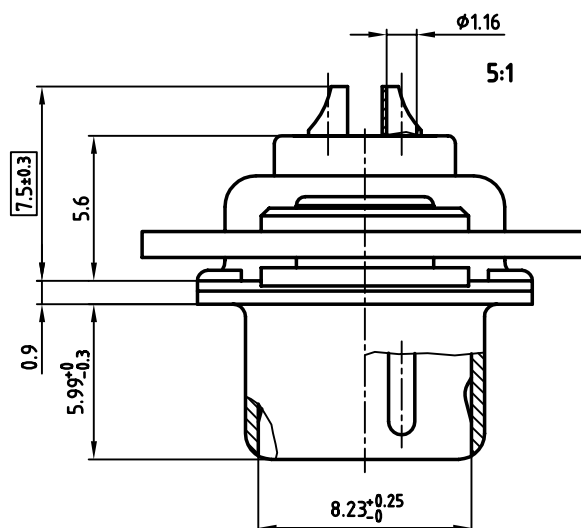


used for: D-SUB

NOTES:

1. METALSHELLS: STEEL; min. 320 μ " TIN
2. INSULATORS: PBT GF UL 94 V-0, BLACK
3. CONTACTS: COPPER ALLOY
4. PLATING: min. 8 μ " HARD GOLD OVER min. 50 μ " NICKEL
5. FRAME: STEEL; 315 μ " YELLOWCHROME OVER 120 μ " ZINC
6. FLOAT MOUNTS: COPPER ALLOY; max. 200 μ " NICKEL
7. RIVETED INSERT: COPPER ALLOY; min. 200 μ " TIN over 80 μ " NICKEL
8. COLLAR: COPPER ALLOY min. 200 μ " TIN over 80 μ " NICKEL
9. CONNECTOR IS PART MARKED: 163A05529A CONEC Y/WW
10. = CRITICAL DIMENSION



THIS DRAWING MAY NOT BE COPIED OR REPRODUCED IN ANY WAY, AND MAY NOT BE PASSED ON TO A THIRD PARTY WITHOUT WRITTEN PERMISSION. OWNERSHIP AND COPYRIGHT OF CONEC GmbH DO NOT ALTER CAD DRAWING BY HAND				tolerance			scale: 2:1 (5:1)			
							material: SEE NOTES			
					2002	date	title: D-SUB MALE SOLDER CUP 37pos. with FRAME,FLOAT for BLIND MATING SYSTEM			
					drawn	10.05.			Parei	
					appd.	10.05.			E. Mickenbecker	
					norm	DIN 41652				
					d-old					
								dwg no:	AutoCAD 2000	DIN-A
									16K1A574	3
									sh: 1/1	
rev.	description	date	name			part no:		163A05529A		

Mouser Electronics

Authorized Distributor

Click to View Pricing, Inventory, Delivery & Lifecycle Information:

[CONEC:](#)

[163A05529A](#)