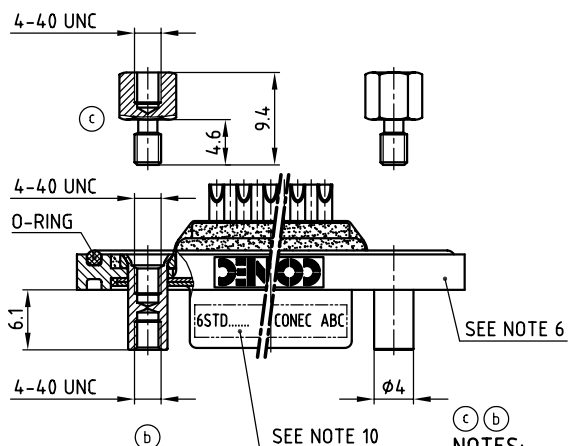
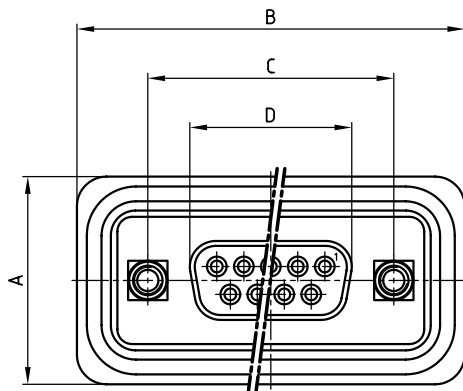
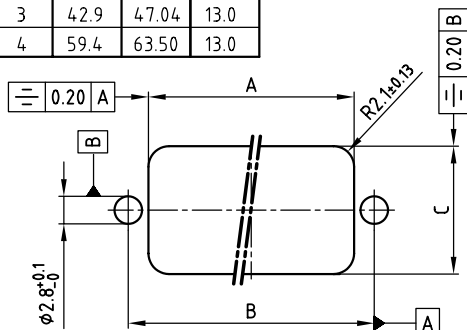


POS.	A ±0.1	B ±0.1	C ±0.1
1	20.9	25.00	13.0
2	29.2	33.30	13.0
3	42.9	47.04	13.0
4	59.4	63.50	13.0

RECOMMENDED PANEL CUT-OUT



NOTES:

- METALSHELLS: COPPER ALLOY; min. 315µin TIN over 40-80pin NICKEL
- INSULATORS: PBT GF UL 94 V-0; BLACK
- CONTACTS: COPPER ALLOY
PLATING: 30pin HARD GOLD over min. 50pin NICKEL
SOLDER CUP ACCEPTS CABLE AWG 20
- THREADED LOCKS: COPPER ALLOY; min. 200µin TIN over 80pin NICKEL
- COLLARS: COPPER ALLOY; min. 200µin TIN over 80pin NICKEL
- FRAME: ZINC DIE CAST; NICKEL PLATED
- O-RING: SILICON; BLUE
- HEXLOCKING SCREW: STAINLESS STEEL
- RECOMMENDED TORQUE FOR MOUNTING SCREW 35Ncm (3.1 in.LB) / max.40Ncm (3.5 in.LB)
- CONNECTOR IS PART MARKED: PART-NO. CONEC ABC

Directive 2002/95 EC
„RoHS“
Compliant

APPROVAL # FREIGABE # DEBLOCAGE # AUTOR/ZACION # APPROVAL	
CUSTOMER APPROVAL DATE:	
NAME:	TITLE:
COMPANY NAME:	
APPROVAL # FREIGABE # DEBLOCAGE # AUTOR/ZACION # APPROVAL	

THIS DRAWING MAY NOT BE COPIED OR
REPRODUCED IN ANY WAY, AND MAY NOT
BE PASSED ON TO A THIRD PARTY WITHOUT
WRITTEN PERMISSION
OWNERSHIP AND COPYRIGHT OF CONEC GmbH
DO NOT ALTER CAD DRAWING BY HAND

rev.	description	date	name
6 x c	Ä 3511	19.11.2009	Lehmen
2 x b	Ä 2053	27.07.2004	Lehmen
a	Origin		

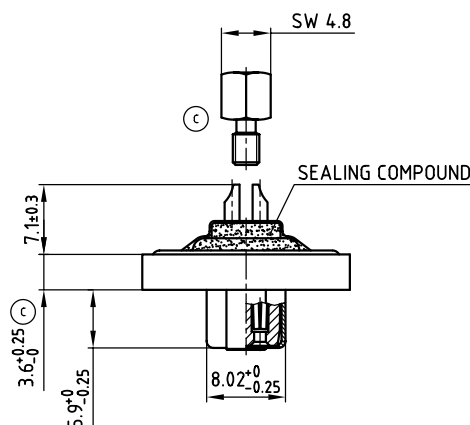
tolerance	dim. in mm
2004	date
drawn	21.07.
appd.	21.07.
norm	DIN 41652
d-old	

scale:	2:1
material:	SEE NOTES
title:	
D-SUB FEMALE	
9-37pos. SOLDER CUP	
with threaded lock and hexlocking screw	
dwg no:	AutoCAD 2004
18K1A275	
part no:	SEE TABLE

used for: D-SUB

POS.	A +0.3	B +0.3	C	D -0.25	PART NO.
9	21.1	39.4	25.00 $^{+0.12}_{-0.13}$	16.46	6STD09SCM99B50X
15	21.1	47.7	33.30 $^{+0.15}_{-0.1}$	24.79	6STD15SCM99B50X
25	21.1	61.4	47.04 $^{+0.13}_{-0.1}$	38.50	6STD25SCM99B50X
37	21.1	77.9	63.50 $^{+0.13}_{-0.1}$	54.96	6STD37SCM99B50X

AT ALL TIMES WATER RESISTANT CONNECTORS NOT
IN USE SHOULD BE COVERED WITH A CONEC WATER
RESISTANT CAP OR WATER TIGHT HOOD.



Mouser Electronics

Authorized Distributor

Click to View Pricing, Inventory, Delivery & Lifecycle Information:

CONEC:

6STD09SCM99B50X