

4

3

2

1

used for:

D-SUB

F

F

E

E

D

D

C

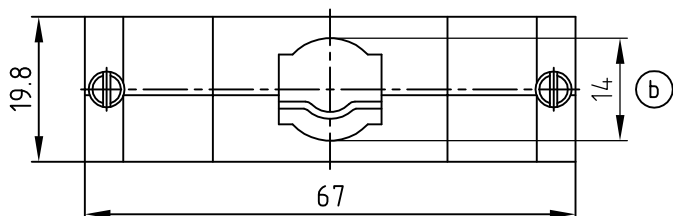
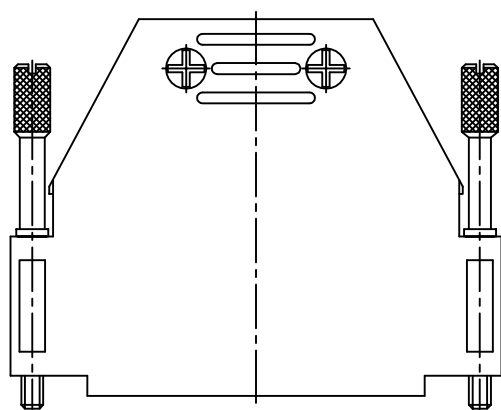
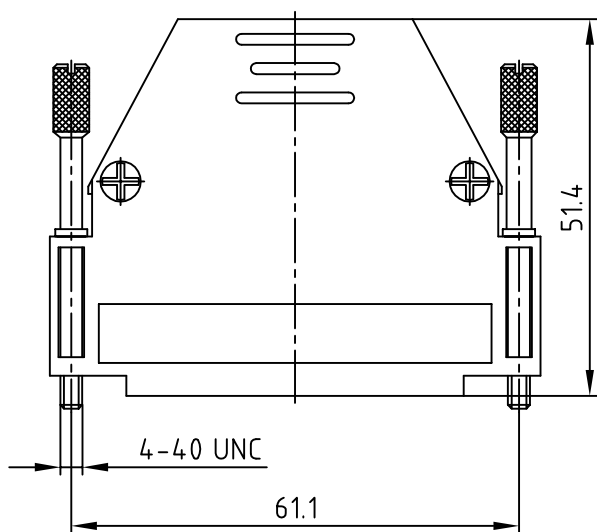
C

B

B

A

A



Part No. Bulk package	Part No. Single package
165X10179X	165X10179XE

General tolerances			
size in mm			
> 0.5 up to 3	> 3 up to 6	> 6 up to 30	> 30 up to 120
tolerances			
±0.1	±0.2	±0.2	±0.3

NOTES:

SELF CUTTING HOUSING SCREWS

MATERIAL: ABS BLACK

STRAIGHT CABLE OUTLET WITH PREASSEMBLED METAL STRAIN RELIEF

TWO MOBILE ASSEMBLED SCREWS FOR FIXING THE COUNTERPART

TEMPERATURE RANGE: -40°C TO +85°C

RoHS compliant

THIS DRAWING MAY NOT BE COPIED OR
REPRODUCED IN ANY WAY, AND MAY NOT
BE PASSED ON TO A THIRD PARTY WITHOUT
WRITTEN PERMISSION.
OWNERSHIP AND COPYRIGHT OF CONEC GmbH
DO NOT ALTER CAD DRAWING BY HAND

				tolerance SEE TABLE		dim. in mm
				2009	date	name
				drawn	31.08.	Lehmenkühler
				appd.	31.08.	Koch
				norm		
				d-old		
1 x b	Ä5676	11.06.2015	K.H.			
a	Original					
rev.	description	date	name			

scale:	1:1
material:	SEE NOTES
title:	PLASTIC HOOD 50pos. with straight cable exit, jack screws
dwg no:	16K1A2534
part no:	SEE TABLE
DIN-A	4
sh:	1/1

Mouser Electronics

Authorized Distributor

Click to View Pricing, Inventory, Delivery & Lifecycle Information:

[CONEC:](#)

[165X10179X](#)