

4

3

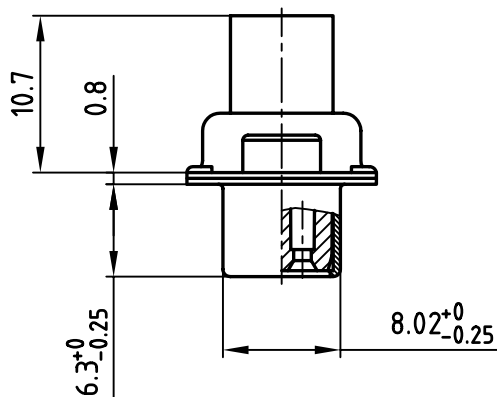
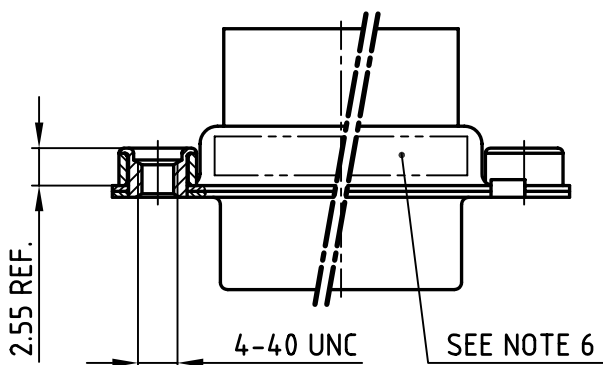
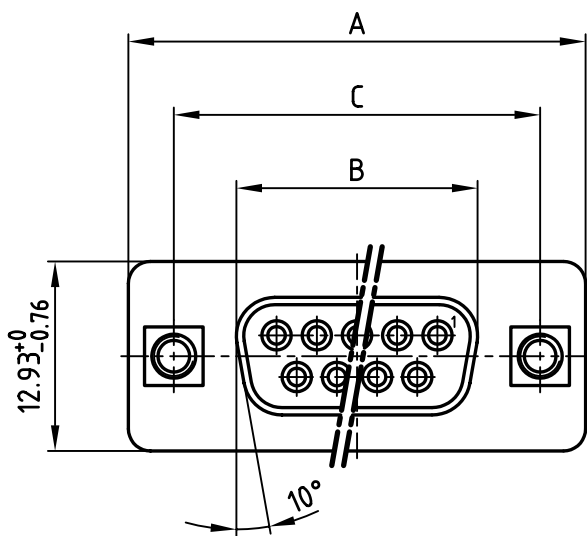
2

1

used for:

D-SUB

POS.	A -0.76	B -0.25	C	Part-NO.
9	31.19	16.46	25.00 $^{+0.12}_{-0.13}$	DSS1XSXXG04X
15	39.52	24.79	33.30 $^{+0.15}_{-0.1}$	DSS2XSXXG04X
25	53.42	38.50	47.04 ± 0.13	DSS3XSXXG04X
37	69.70	54.96	63.50 ± 0.13	DSS4XSXXG04X



Directive 2002/95/EC
„RoHS“
Compliant

(b)

NOTES:

1. METALSHELLS: STEEL; min. 315µin TIN over 40-80pin NICKEL
2. INSULATORS: PBT GF UL 94 V-0, BLACK
3. THREADED INSERT: COPPER ALLOY; min. 200µin TIN over 80pin NICKEL
4. COLLAR: COPPER ALLOY; min. 200µin TIN over 80µin NICKEL
5. MAXIMUM TORQUE VALUE FOR THREAD: 6 in.LB
6. CONNECTOR IS PART MARKED: PART-NO. CONEC ABC

APPROVAL * FREIGABE * DEBLOCAGE * AUTOR/ZACON * APPROVAL	
CUSTOMER APPROVAL DATE:	
NAME:	TITLE:
COMPANY NAME:	
APPROVAL * FREIGABE * DEBLOCAGE * AUTOR/ZACON * APPROVAL	

THIS DRAWING MAY NOT BE COPIED OR
REPRODUCED IN ANY WAY, AND MAY NOT
BE PASSED ON TO A THIRD PARTY WITHOUT
WRITTEN PERMISSION.
OWNERSHIP AND COPYRIGHT OF CONEC GmbH
DO NOT ALTER CAD DRAWING BY HAND

			tolerance		
			2005	date	name
			drawn	03.05	Schmidt
			appd.	03.05.	Kühle
			norm	DIN 41652	
			d-old		
1 x b	Ä 2542	02.08.2006	Lehmen		
a	Origin				
rev.	description	date	name		

CONEC®



dim. in mm

scale: 2:1
material: SEE NOTES

title:
D-SUB FEMALE
9-37pos. CRIMP STYLE
with threaded insert

dwg no: AutoCAD 2004 DIN-A
16K1A1392 4
sh: 1/1

part no: SEE TABLE

4

3

2

1

Mouser Electronics

Authorized Distributor

Click to View Pricing, Inventory, Delivery & Lifecycle Information:

[CONEC:](#)

[DSS3XSXXG04X](#)