

4

3

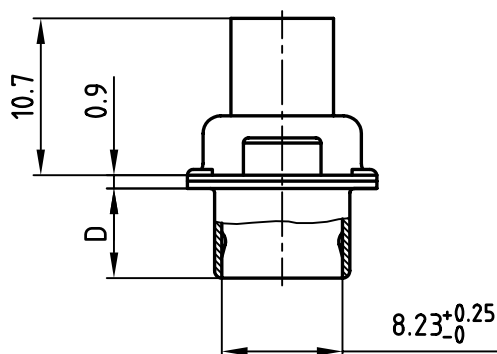
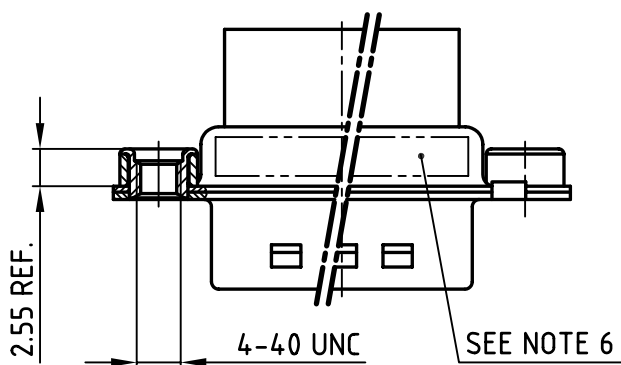
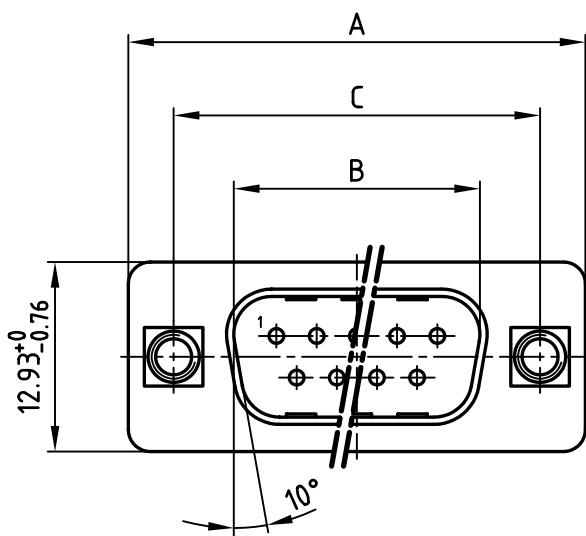
2

1

used for:

D-SUB

POS.	A -0.76	B $+0.25$	C	D -0.3	Part-N0.
9	31.19	16.79	25.00 $+0.12$ -0.13	6.12	DSS1XPXXG04X
15	39.52	25.12	33.30 $+0.15$ -0.1	6.12	DSS2XPXXG04X
25	53.42	38.84	47.04 ± 0.13	5.99	DSS3XPXXG04X
37	69.70	55.30	63.50 ± 0.13	5.99	DSS4XPXXG04X



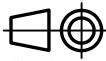

Directive 2002/95/EC
"RoHS"
Compliant

NOTES:

1. METALSHELLS: STEEL; min. 315µin TIN over 40-80µin NICKEL
2. INSULATORS: PBT GF UL 94 V-0, BLACK
3. THREADED INSERT: COPPER ALLOY; min. 200µin TIN over 80µin NICKEL
4. COLLAR: COPPER ALLOY; min. 200µin TIN over 80µin NICKEL
5. MAXIMUM TORQUE VALUE FOR THREAD: 6in.LBS
6. CONNECTOR IS PART MARKED: PART-NO. CONEC ABC

APPROVAL * FREIGABE * DEBLOCAGE * AUTOR/ZACON * APPROVAL	
CUSTOMER APPROVAL DATE:	
NAME:	TITLE:
COMPANY NAME:	
APPROVAL * FREIGABE * DEBLOCAGE * AUTOR/ZACON * APPROVAL	

THIS DRAWING MAY NOT BE COPIED OR
REPRODUCED IN ANY WAY, AND MAY NOT
BE PASSED ON TO A THIRD PARTY WITHOUT
WRITTEN PERMISSION.
OWNERSHIP AND COPYRIGHT OF CONEC GmbH
DO NOT ALTER CAD DRAWING BY HAND

				tolerance		 dim. in mm
				2006	date	name
				drawn	29.09.	Lehmenkühler
				appd.	02.10.	Kühle
				norm	DIN 41652	
				d-old		
						
a	Origin					
rev.	description	date	name			

CONEC®

scale:	2:1
material:	SEE NOTES
title:	D-SUB MALE 9-37pos. CRIMP STYLE with threaded insert
dwg no:	AutoCAD 2006
	16K1A1903
part no:	SEE TABLE

DIN-A
4
sh: 1/1

4

3

2

1

Mouser Electronics

Authorized Distributor

Click to View Pricing, Inventory, Delivery & Lifecycle Information:

CONEC:

DSS3XPXXG04X