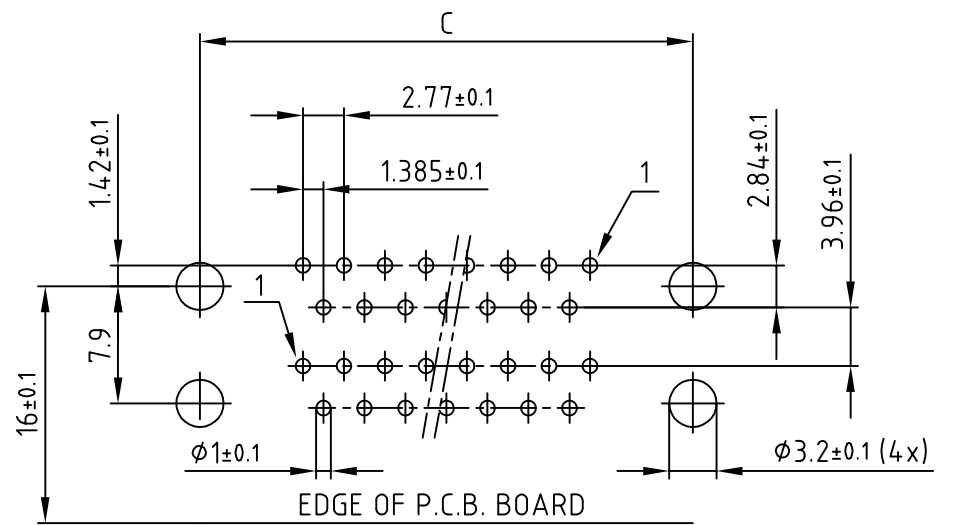
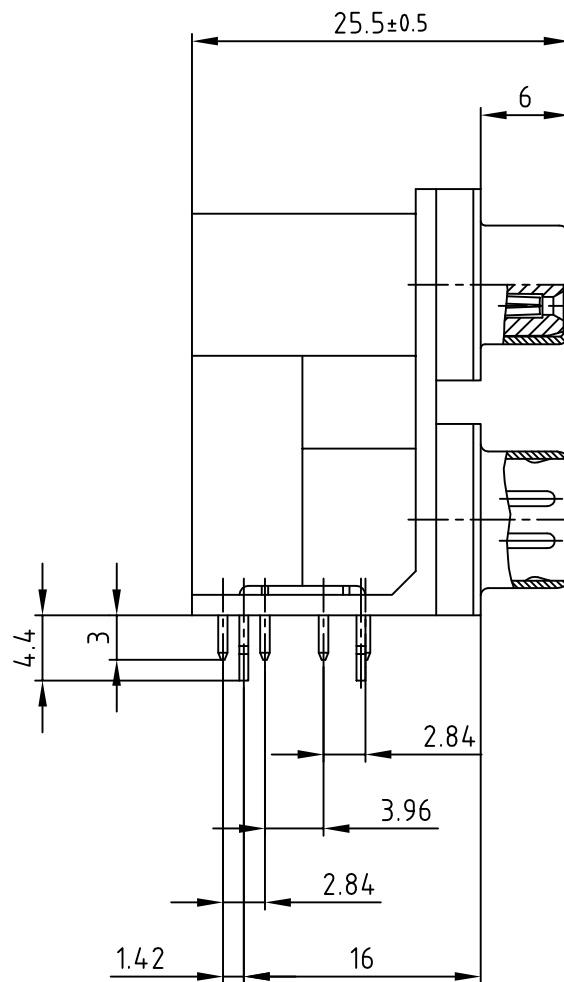
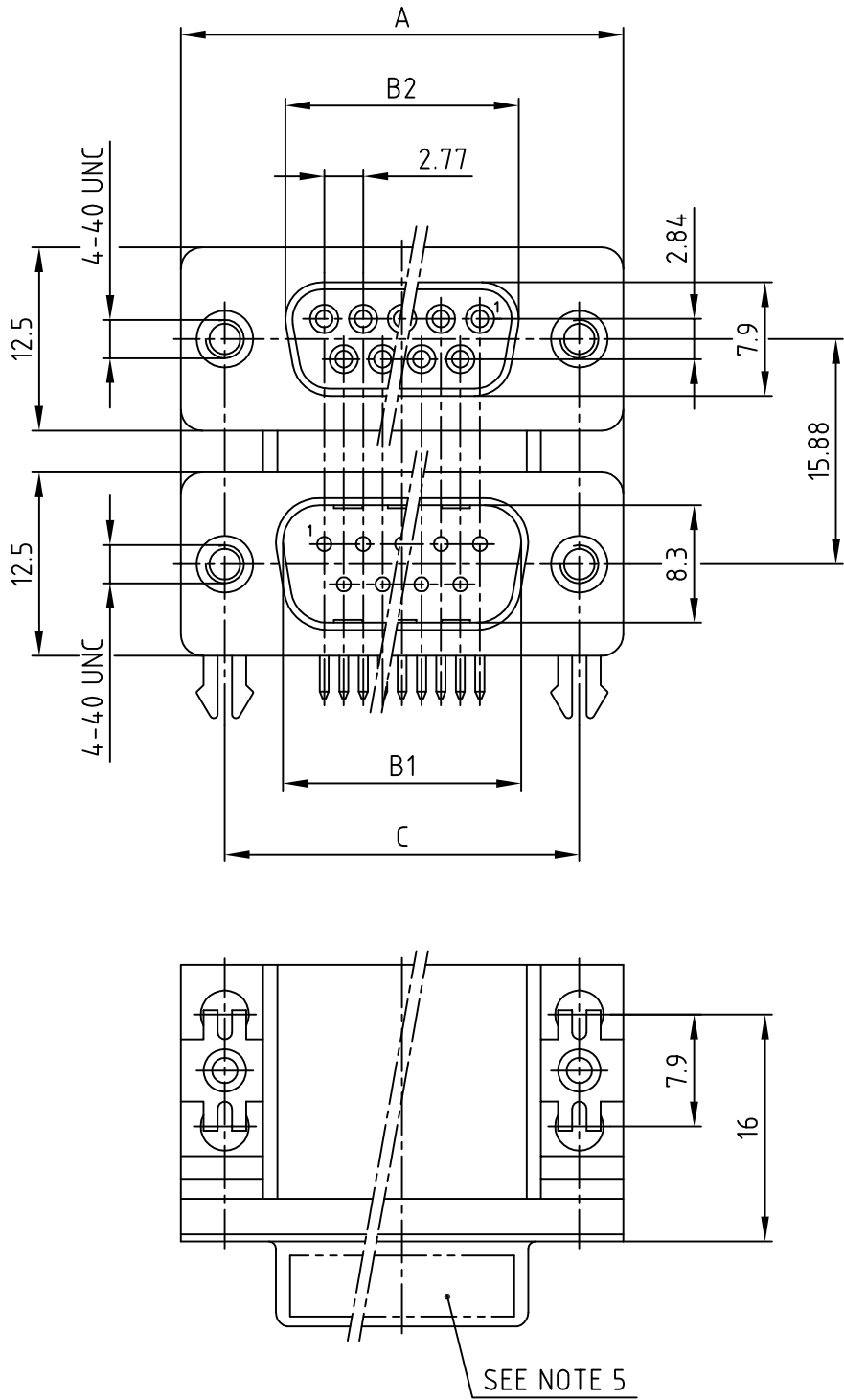


used for: D-SUB DUAL-PORT



## RECOMMENDED P.C.B. LAYOUT

No. of pos.	A	B1	B2	C	Part NO.
2x 9	30.80	16.92	16.30	25.00	DLS1SP5AN21X
2x15	39.20	25.25	24.60	33.30	DLS2SP5AN21X
2x25	53.10	38.96	38.30	47.10	DLS3SP5AN21X
2x37	69.40	55.42	54.80	63.50	DLS4SP5AN21X

Directive 2002/95/EC RoHS compliant

NOTES:

1. METALSHELLS: STEEL; min. 320µin TIN
2. INSULATORS: PBT GF UL 94 V-0, BLACK
- b) 3. CONTACTS: COPPER ALLOY  
PLATING MATING AREA: GOLD FLASH
4. MAXIMUM TORQUE VALUE FOR THREAD: 6 in.LB
5. CONNECTOR IS PART MARKED: 

PART-NO.	CONEC	ABC
----------	-------	-----

APPROVAL # FREIGABE # DEBLOCKAGE # AUTOR/ZACION # APPROVAL	
CUSTOMER APPROVAL DATE:	
NAME:	TITLE:
COMPANY NAME:	
APPROVAL # FREIGABE # DEBLOCKAGE # AUTOR/ZACION # APPROVAL	

THIS DRAWING MAY NOT BE COPIED OR REPRODUCED IN ANY WAY, AND MAY NOT BE PASSED ON TO A THIRD PARTY WITHOUT WRITTEN PERMISSION.  
OWNERSHIP AND COPYRIGHT OF CONEC GmbH  
DO NOT ALTER CAD DRAWING BY HAND

1 x b	Ä3442	28.09.2009	Petker
a	Origin		
rev.	description	date	name

tolerance		 dim. in mm
2004	date	name
drawn	18.05.	Lehmenkühler
appd.	18.05.	Mickenbecker
norm		
d-old		

scale:	2:1	
material:	SEE NOTES	
title:	DUAL-PORT 15.88mm Female / Male 2x9pos. - 2x37pos. with 4-40 UNC insert and clip	
dwg no:	AutoCAD 2004	DIN-A
16K1A1168		3
		sh: 1/1
part no:	SEE TABLE	

# Mouser Electronics

Authorized Distributor

Click to View Pricing, Inventory, Delivery & Lifecycle Information:

[CONEC:](#)

[DLS1SP5AN21X](#)