

4

3

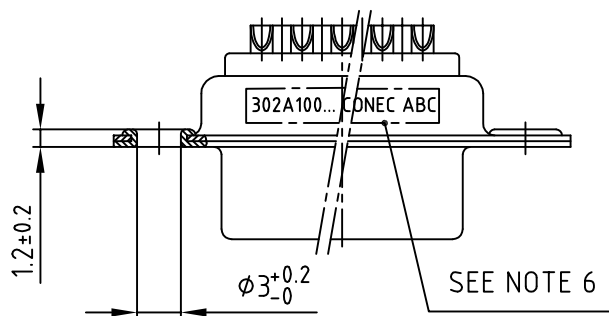
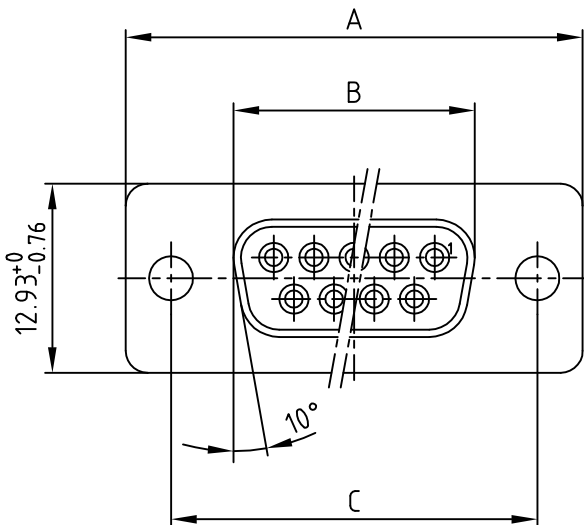
2

1

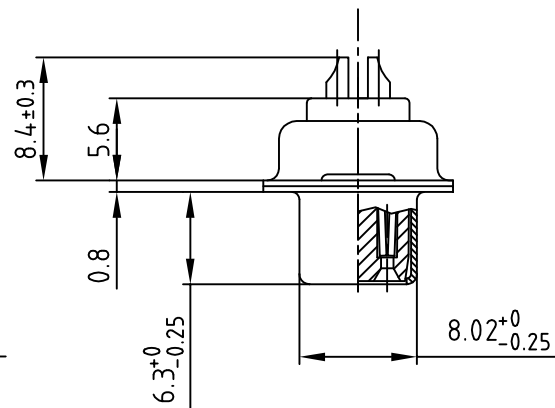
used for:

D-SUB

POS.	A -0.76	B -0.25	C	Art.-NO.
9	31.19	16.46	25.00 $^{+0.12}_{-0.13}$	302A10019X
15	39.52	24.79	33.30 $^{+0.15}_{-0.1}$	302A10029X
25	53.42	38.50	47.04 $\pm 0.13$	302A10059X
37	69.70	54.96	63.50 $\pm 0.13$	302A10069X



(b)



## NOTES:

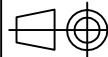
1. METALSHELLS: STEEL; min. 315µin TIN over 40-80µin NICKEL
2. INSULATORS: PBT GF UL 94 V-0, BLACK
3. CONTACTS: COPPER ALLOY
4. PLATING: min. 8µin HARD GOLD over min. 50µin NICKEL
5. ACCEPTS CABLE AWG 20
6. CONNECTOR IS PART MARKED: PART-NO CONEC ABC

Directive 2002/95/EC  
„RoHS“  
Compliant

THIS DRAWING MAY NOT BE COPIED OR  
REPRODUCED IN ANY WAY, AND MAY NOT  
BE PASSED ON TO A THIRD PARTY WITHOUT  
WRITTEN PERMISSION.  
OWNERSHIP AND COPYRIGHT OF CONEC GmbH  
DO NOT ALTER CAD DRAWING BY HAND

1 x b	Ä3486	09.11.09	Sonne
a	Origin		
rev.	description	date	name

tolerance



scale:

2:1

material:

SEE NOTES

title:

D-SUB FEMALE  
9-37pos. SOLDER CUP  
STAMPED CONTACTS

dwg no:

AutoCAD 2000

DIN-A

16K1A206A

4

sh:1/2

part no:

SEE TABLE

**CONEC®**

4

3

2

1

# Mouser Electronics

Authorized Distributor

Click to View Pricing, Inventory, Delivery & Lifecycle Information:

[CONEC:](#)

[302A10019X](#)