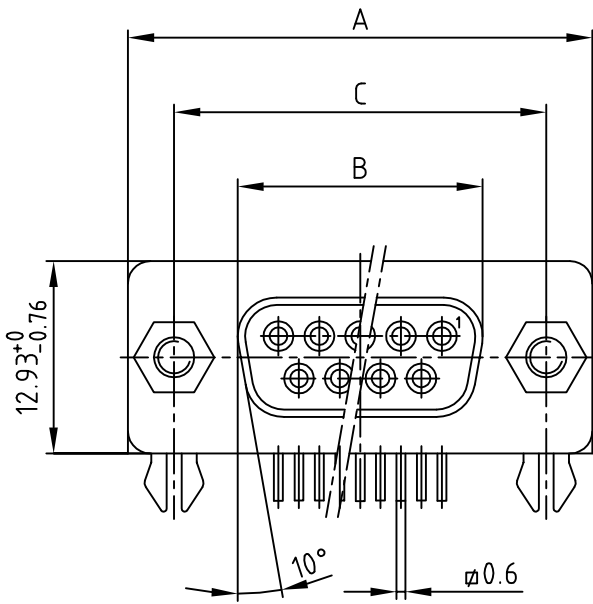
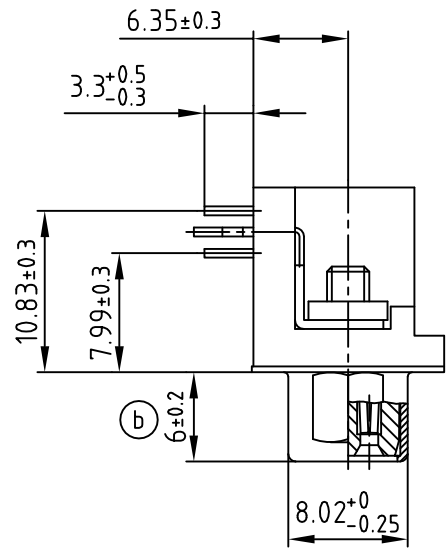
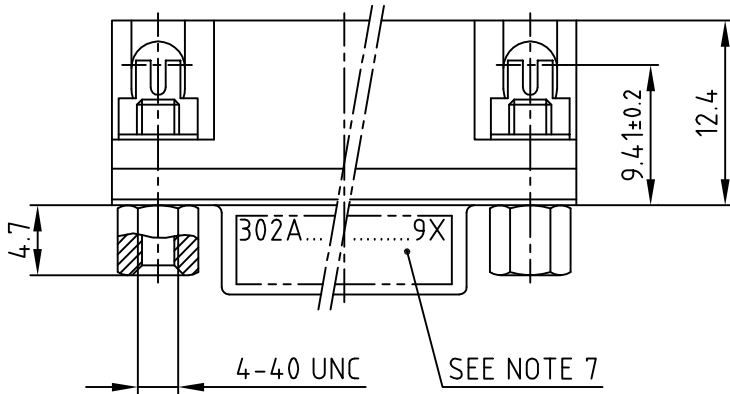


used for: D-SUB



POS.	A -0.76	B -0.25	C	Part NO.
9	31.19	16.46	25.00 ^{+0.12} / _{-0.13}	302A11249X
15	39.52	24.79	33.30 ^{+0.15} / _{-0.1}	302A11259X
25	53.42	38.50	47.04 ±0.13	302A11269X
37	69.70	54.96	63.50 ±0.13	302A11279X



NOTES:

- ① METALSHELLS: STEEL; NICKEL PLATED
- ② INSULATORS: PBT GF UL 94 V-0, BLACK
- ③ CONTACTS: COPPER ALLOY
PLATING: GOLD FLASH over NICKEL
- ④ PCB-SNAPS: COPPER ALLOY; min. 200µin TIN over 80µin NICKEL
PCB-HOLE: $\phi 3.1 \pm 0.1$; PCB THICKNESS 1.6mm
- ⑤ P.C.B. HOLE DRILLINGS ON DRAWING NO.: 16K111UA
- ⑥ MAXIMUM TORQUE VALUE FOR THREAD: 6 in.LB
- ⑦ CONNECTOR IS PART MARKED: PART-NO. CONEC ABC

RoHS compliant

THIS DRAWING MAY NOT BE COPIED OR REPRODUCED IN ANY WAY, AND MAY NOT BE PASSED ON TO A THIRD PARTY, WITHOUT WRITTEN PERMISSION. OWNERSHIP AND COPYRIGHT OF CONEC GmbH DO NOT ALTER CAD DRAWING BY HAND

rev.	description	date	name
1 x c	Ä 5865	29.10.2015	Unkrüter
1 x b	Ä 5290	24.07.2014	Lehm.
a	Original		

tolerance		dim. in mm	
2003	date	name	
drawn	26.05.	Lehmenkühler	
appd.	26.05.	Kühle	
norm			

scale:	2:1
material:	SEE NOTES
title:	D-SUB FEMALE 90° 9-37pos. with threaded insert , hex bolt and clip
dwg no:	16K1A958
part no:	SEE TABLE

DIN-A
3
sh: 1/1

Mouser Electronics

Authorized Distributor

Click to View Pricing, Inventory, Delivery & Lifecycle Information:

[CONEC:](#)

[301A10939X](#) [302A11259X](#) [302A11269X](#)