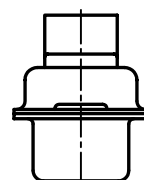
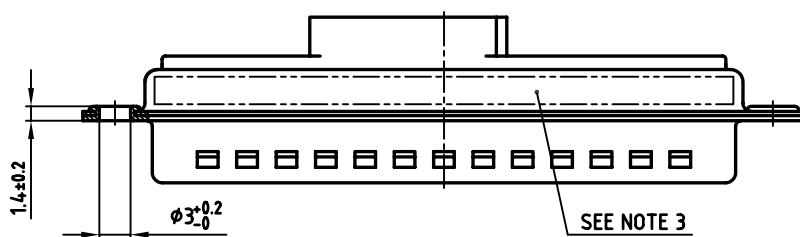
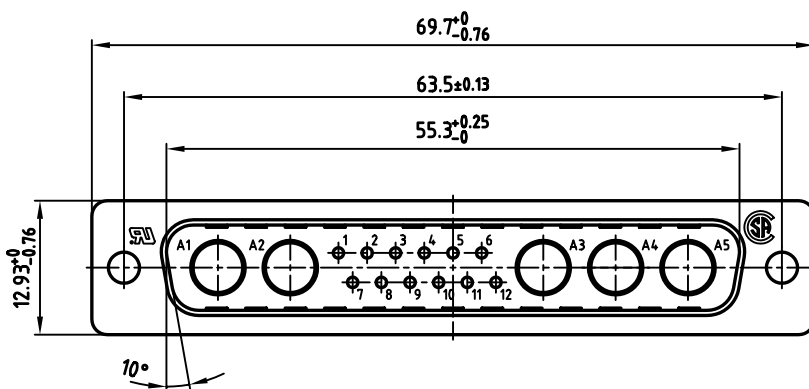
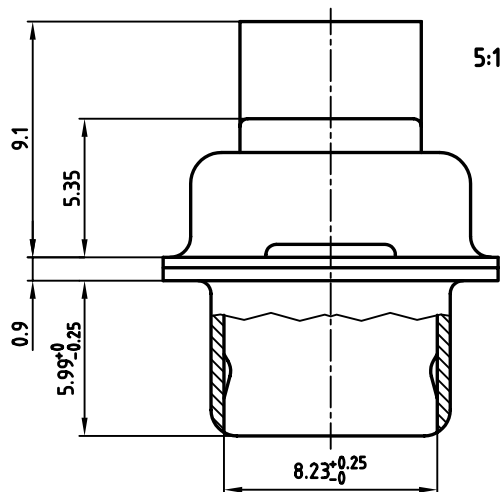


used for: D-SUB COMBINATION CRIMP



NOTES:

1. METAL SHELLS: STEEL; min. 320µ" TIN
2. INSULATORS: PBT GF UL 94 V-0, BLACK

3. CONNECTOR IS PART MARKED: 3017W5PXK99A10X CONEC ABC

Directive 2002/95/EC
„RoHS“
Compliant

APPROVAL * FREIGABE * DEBLOCAGE * AUTORIZACION * APPROVAL	
CUSTOMER APPROVAL DATE:	
NAME:	TITLE:
COMPANY NAME:	
APPROVAL * FREIGABE * DEBLOCAGE * AUTORIZACION * APPROVAL	

THIS DRAWING MAY NOT BE COPIED OR
REPRODUCED IN ANY WAY, AND MAY NOT
BE PASSED ON TO A THIRD PARTY WITHOUT
WRITTEN PERMISSION.
OWNERSHIP AND COPYRIGHT OF CONEC GmbH
DO NOT ALTER CAD DRAWING BY HAND

rev.	description	date	name

tolerance			dim. in mm
2005	date		
drawn	21.07.	name	
appd.	21.07.	Mickenbecker	
norm			
d-old			

CONEC

scale: 2:1 (5:1)	
material: SEE NOTES	
title: D-SUB COMBINATION MALE 17W5P CRIMP STYLE	
dwg no: 13K1A1406	AutoCAD 2004 DIN-A 3 sh: 1/1
part no: 3017W5PXK99A10X	

Mouser Electronics

Authorized Distributor

Click to View Pricing, Inventory, Delivery & Lifecycle Information:

CONEC:

[3017W5P XK99A10X](#)