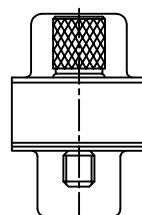
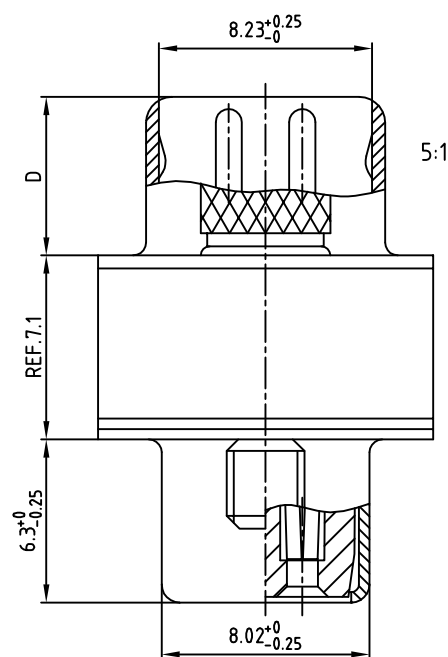
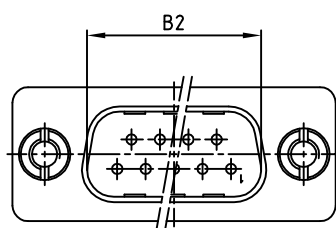
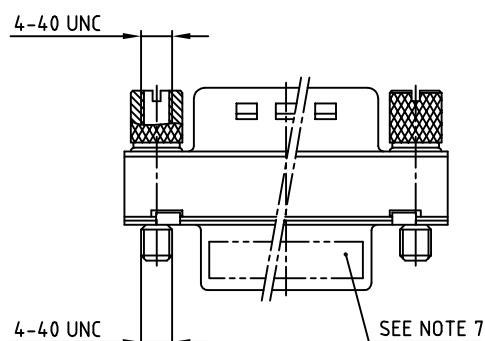
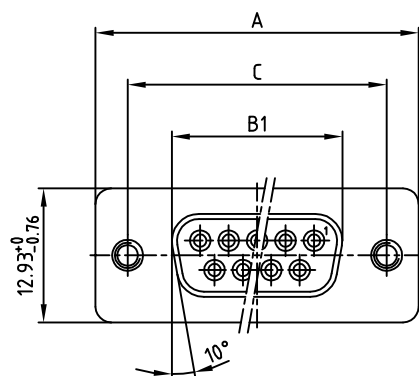


used for: FILTER ADAPTER

POS.	A -0.76	B1 -0.25	B2 +0.25	C	D -0.3	PART NO.
9	31.19	16.46	16.79	25.00 $^{+0.12}_{-0.13}$	6.12	243A10050X
15	39.52	24.79	25.12	33.30 $^{+0.15}_{-0.1}$	6.12	243A10060X
25	53.42	38.50	38.84	47.04 $\pm 0.13$	5.99	243A10070X
37	69.70	54.96	55.30	63.50 $\pm 0.13$	5.99	243A10080X



## NOTES:

- METALSHELLS: STEEL; min. 320pin TIN
- INSULATORS: PBT GF UL 94 V-0, BLACK
- CONTACTS: COPPER ALLOY  
PLATING: 8pin HARD GOLD OVER min. 50pin NICKEL
- CAPACITANCE: 1300pF  $\pm 20\%$
- DIELECTRIC WITHSTANDING VOLTAGE: 424 VDC
- MAXIMUM TORQUE VALUE FOR THREAD: 6 in.LB
- CONNECTOR IS PART MARKED: **PART-NO. CONEC ABC**

Directive 2002/95/EC RoHS compliant

APPROVAL * FREIGABE * DEBLOCAGE * AUTORIZACION * APPROVAL
CUSTOMER APPROVAL DATE:
NAME: TITLE:
COMPANY NAME:
APPROVAL * FREIGABE * DEBLOCAGE * AUTORIZACION * APPROVAL

THIS DRAWING MAY NOT BE COPIED OR  
REPRODUCED IN ANY WAY, AND MAY NOT  
BE PASSED ON TO A THIRD PARTY WITHOUT  
WRITTEN PERMISSION.  
OWNERSHIP AND COPYRIGHT OF CONEC GmbH  
DO NOT ALTER CAD DRAWING BY HAND

rev.	description	date	name

tolerance		
2005	date	name
drawn	03.08.	Lehmenkühler
appd.	03.08.	Mickenbecker
norm.	DIN 41652	
d-old		

**CONEC**

scale:	2:1 (5:1)
material:	SEE NOTES
title:	D-SUB C-FILTER ADAPTER 9-37pos. PLUG / SOCKET with jack screws
dwg no:	AutoCAD 2004
part no:	24K1A681
SEE TABLE	

DIN-A  
3  
sh: 1/1

# Mouser Electronics

Authorized Distributor

Click to View Pricing, Inventory, Delivery & Lifecycle Information:

[CONEC:](#)

[243A10070X](#)