

4

3

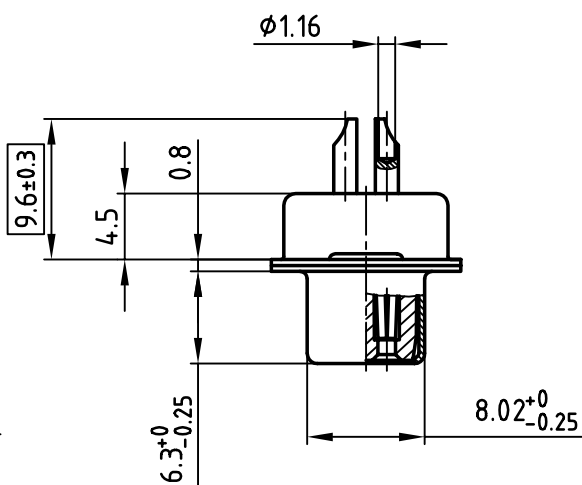
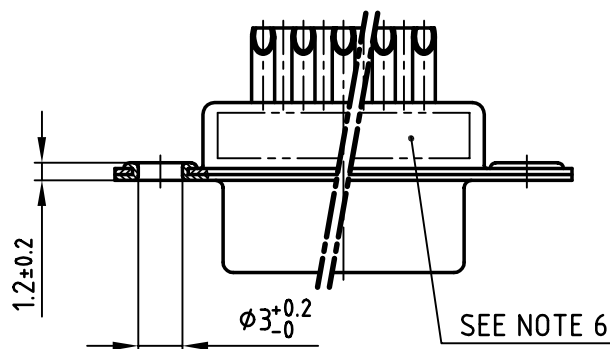
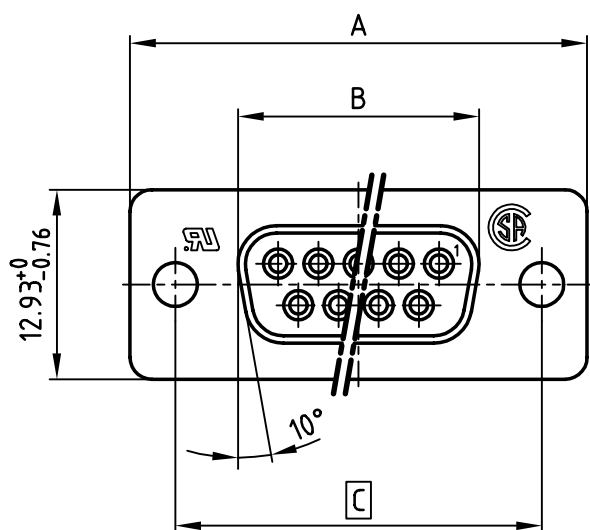
2

1

used for:

D-SUB FILTER

POS.	A -0.76	B -0.25	C	Part NO.
9	31.19	16.46	25.00 $^{+0.12}_{-0.13}$	242A26820X
15	39.52	24.79	33.30 $^{+0.15}_{-0.1}$	242A26830X
25	53.42	38.50	47.04 $\pm 0.13$	242A26840X
37	69.70	54.96	63.50 $\pm 0.13$	242A26850X

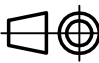



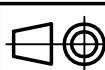
## NOTES:

1. METALSHELLS: STEEL; min. 320µ" TIN
2. INSULATORS: PBT GF UL 94 V-0, BLACK
3. CONTACTS: COPPER ALLOY  
SOLDER CUP ACCEPTS CABLE AWG 20  
PLATING: min. 8µ" HARD GOLD OVER min. 50µ" NICKEL
4. CAPACITANCE: 830pF  $\pm 20\%$
5. DIELECTRIC WITHSTANDING VOLTAGE: 424 VDC
6. CONNECTOR IS PART MARKED: PART-NO. CONEC Y/WW
7.   = CRITICAL DIMENSION

APPROVAL * FREIGABE * DEBLOCAGE * AUTORIZACION	
CUSTOMER APPROVAL DATE:	
NAME:	TITLE:
COMPANY NAME:	
APPROVAL * FREIGABE * DEBLOCAGE * AUTORIZACION	

THIS DRAWING MAY NOT BE COPIED OR  
REPRODUCED IN ANY WAY, AND MAY NOT  
BE PASSED ON TO A THIRD PARTY WITHOUT  
WRITTEN PERMISSION.  
OWNERSHIP AND COPYRIGHT OF CONEC GmbH  
DO NOT ALTER CAD DRAWING BY HAND

				tolerance		
				2002	date	name
				drawn	18.06.	Parei
				appd.	18.06.	E. Mickenbecker
				norm	DIN 41652	
				d-old		
						
rev.	description	date	name			



scale: 2:1  
material: SEE NOTES

title:  
**D-SUB FILTER FEMALE**  
9-37pos. SOLDER CUP

dwg no: AutoCAD 2000  
**24K1A270**  
DIN-A  
4  
sh: 1/1

part no: SEE TABLE

4

3

2

1

# Mouser Electronics

Authorized Distributor

Click to View Pricing, Inventory, Delivery & Lifecycle Information:

[CONEC:](#)

[242A26850X](#)