

4

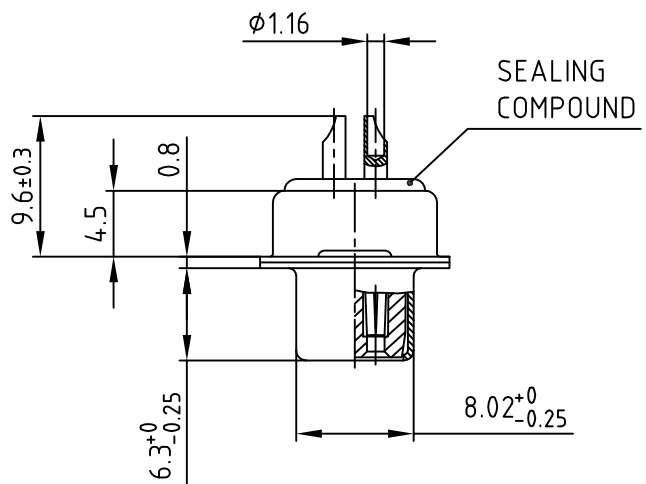
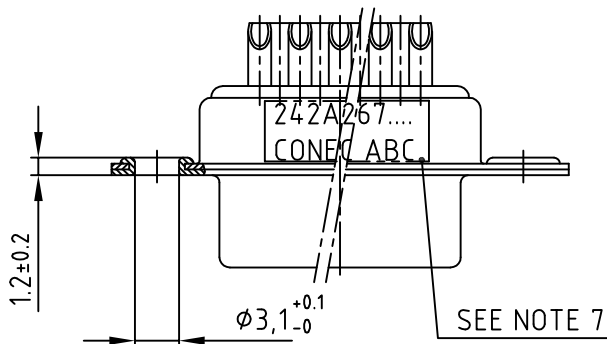
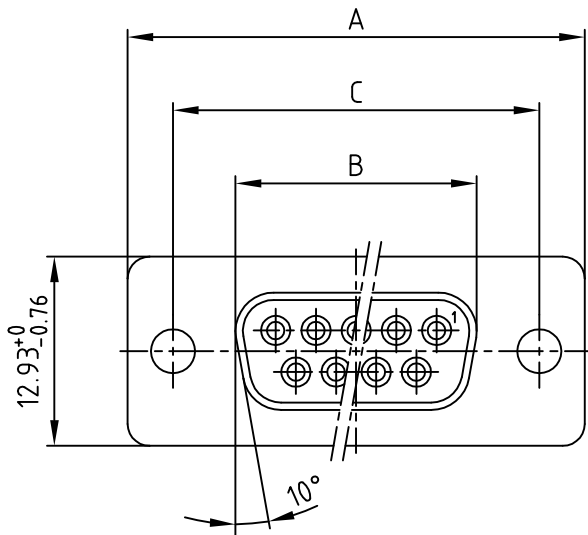
3

2

1

used for: D-SUB FILTER

POS.	A -0.76	B -0.25	C	Part NO.
9	31.19	16.46	25.00 $^{+0.12}_{-0.13}$	242A26740X
15	39.52	24.79	33.30 $^{+0.15}_{-0.1}$	242A26750X
37	69.70	54.96	63.50 $\pm 0.13$	242A26770X



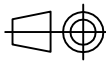

Directive 2002/95/EC  
„RoHS“  
Compliant

## NOTES:

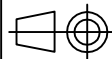
1. RoHS COMPLIANT
2. METALSHELLS: STEEL; min. 315µin TIN over 40-80µin NICKEL
3. INSULATORS: HIGH TEMPERATURE PLASTIC UL V-0, BLACK
4. CONTACTS: COPPER ALLOY  
PLATING: 8µin HARD GOLD over min. 50µin NICKEL  
SOLDER CUP ACCEPTS CABLE AWG 20
5. CAPACITANCE: 180pF  $\pm 20\%$
6. DIELECTRIC WITHSTANDING VOLTAGE: 424 VDC
7. CONNECTOR IS PART MARKED: PART-NO. CONEC ABC

APPROVAL * FREIGABE * DEBLOCKAGE * AUTOR/ZACON * APPROVAL	
CUSTOMER APPROVAL DATE:	
NAME:	TITLE:
COMPANY NAME:	
APPROVAL * FREIGABE * DEBLOCKAGE * AUTOR/ZACON * APPROVAL	

THIS DRAWING MAY NOT BE COPIED OR  
REPRODUCED IN ANY WAY, AND MAY NOT  
BE PASSED ON TO A THIRD PARTY WITHOUT  
WRITTEN PERMISSION.  
OWNERSHIP AND COPYRIGHT OF CONEC GmbH  
DO NOT ALTER CAD DRAWING BY HAND

				tolerance		
				2009	date	name
				drawn	15.07.	Sonnenberg
				appd.	15.07.	Fischer
				norm		
				d-old		
a	Origin					
rev.	description	date	name			

**CONEC®**



scale: 2:1  
material: SEE NOTES

title:  
D-SUB FILTER FEMALE  
9, 15, 37pos. SOLDER CUP

dwg no: AutoCAD 2006 DIN-A  
24K2A671 4  
sh: 1/1  
part no: SEE TABLE

4

3

2

1

# Mouser Electronics

Authorized Distributor

Click to View Pricing, Inventory, Delivery & Lifecycle Information:

[CONEC:](#)

[242A27040X](#) [242A26750X](#)