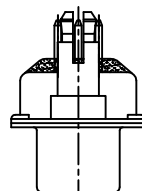
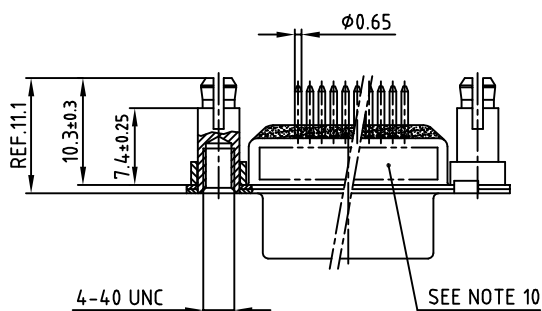
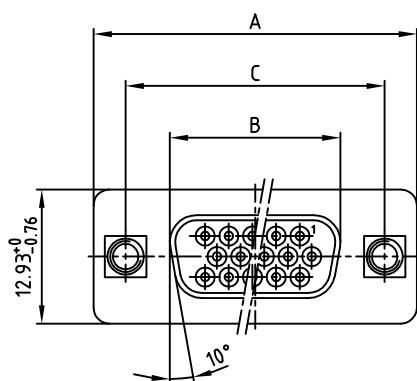
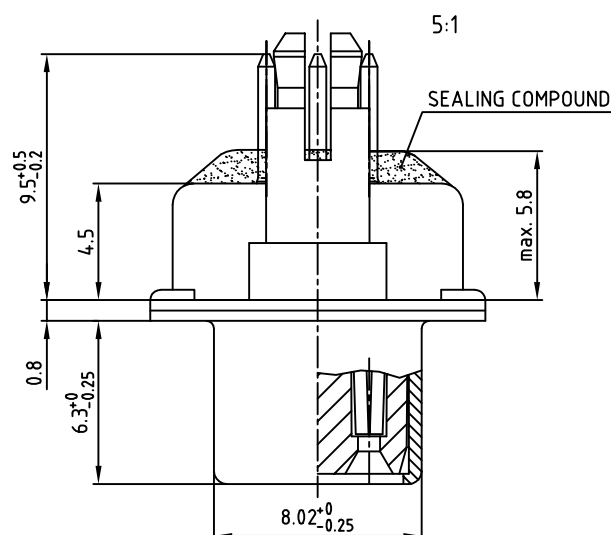


POS.	A -0.76	B -0.25	C	Part NO.
15	31.19	16.46	25.00 ± 0.12 -0.13	242A20650X
26	39.52	24.79	33.30 ± 0.15 -0.1	242A20660X
44	53.42	38.50	47.04 ± 0.13	242A20670X
62	69.70	54.96	63.50 ± 0.13	242A20680X



used for: D-SUB HD FILTER



NOTES:

- METALSHELLS: STEEL; min. 320µm TIN
- INSULATORS: HIGH TEMPERATURE PLASTIC UL 94 V-0, BLACK
- CONTACTS: COPPER ALLOY
PLATING: 8µm HARD GOLD OVER min. 50µm NICKEL
- THREADED SPACER CLIP: COPPER ALLOY; min. 200µm TIN over 80µm NICKEL
PCB-HOLE: $\Phi 3.1 \pm 0.1$; PCB THICKNESS 1.6mm
- COLLAR: COPPER ALLOY; min. 200µm TIN over 80µm NICKEL
- P.C.B. HOLE DRILLINGS ON SHEET 2
- CAPACITANCE: 830pF $\pm 20\%$
- DIELECTRIC WITHSTANDING VOLTAGE: 300 VDC
- MAXIMUM TORQUE VALUE FOR THREAD: 6 in.LB
- CONNECTOR IS PART MARKED: **PART-NO. CONEC ABC**

Directive 2002/95/EC RoHS compliant

APPROVAL * FREIGABE * DEBLOCKAGE * AUTOR/ZACON * APPROVAL	
CUSTOMER APPROVAL DATE:	
NAME:	TITLE:
COMPANY NAME:	
APPROVAL * FREIGABE * DEBLOCKAGE * AUTOR/ZACON * APPROVAL	

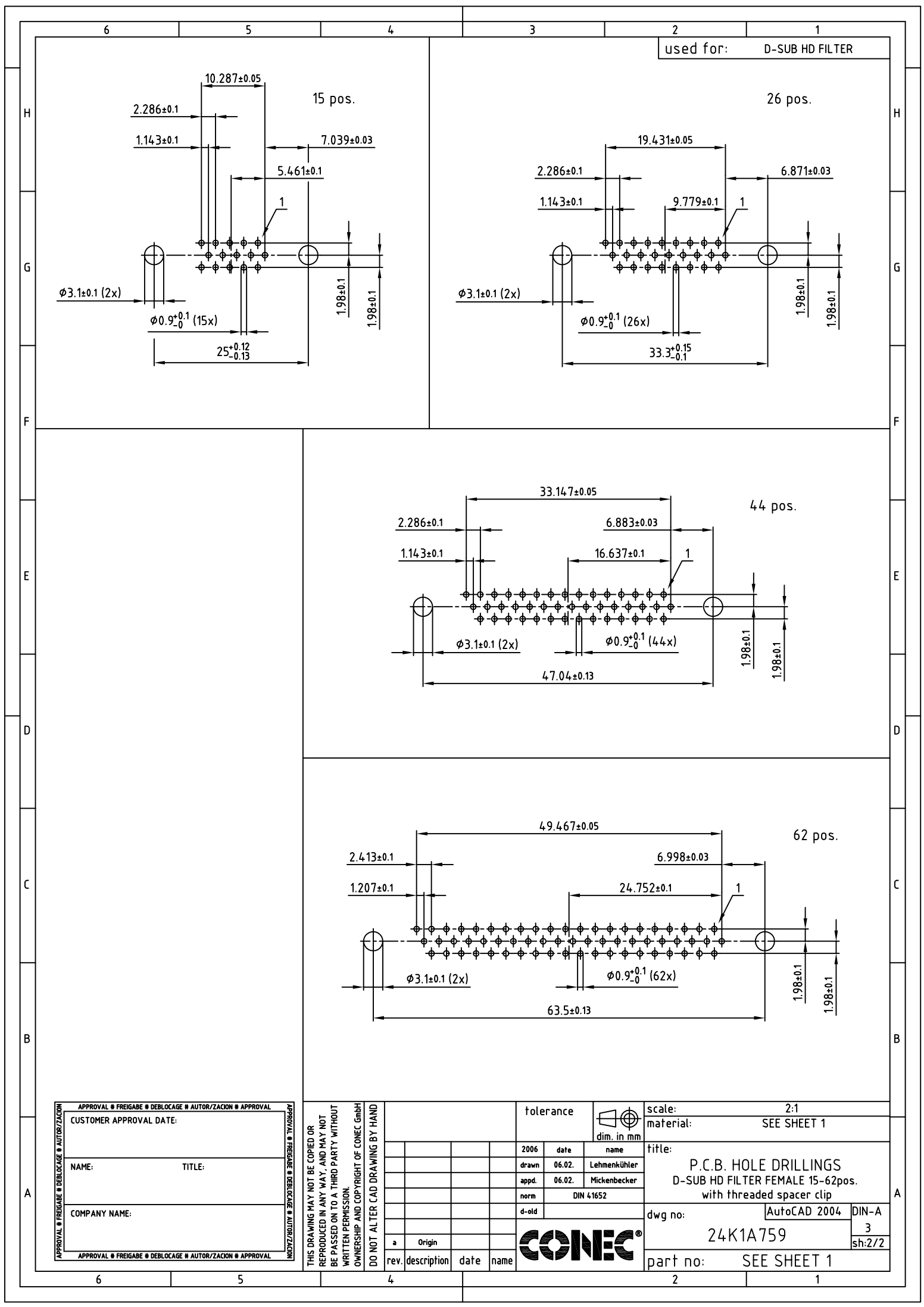
THIS DRAWING MAY NOT BE COPIED OR REPRODUCED IN ANY WAY, AND MAY NOT BE PASSED ON TO A THIRD PARTY WITHOUT WRITTEN PERMISSION.
OWNERSHIP AND COPYRIGHT OF CONEC GmbH
DO NOT ALTER CAD DRAWING BY HAND

rev.	description	date	name
a	Origin		

tolerance	dim. in mm
2006	date
drawn	06.02.
appd.	06.02.
norm	DIN 41652
d-old	

scale:	2:1 (5:1)
material:	SEE NOTES
title:	
D-SUB HD FILTER FEMALE	
15-62pos. SOLDER PIN STRAIGHT	
with threaded spacer clip	
dwg no:	AutoCAD 2004
24K1A759	
part no:	SEE TABLE

CONEC



Mouser Electronics

Authorized Distributor

Click to View Pricing, Inventory, Delivery & Lifecycle Information:

[CONEC:](#)

[242A20650X](#)