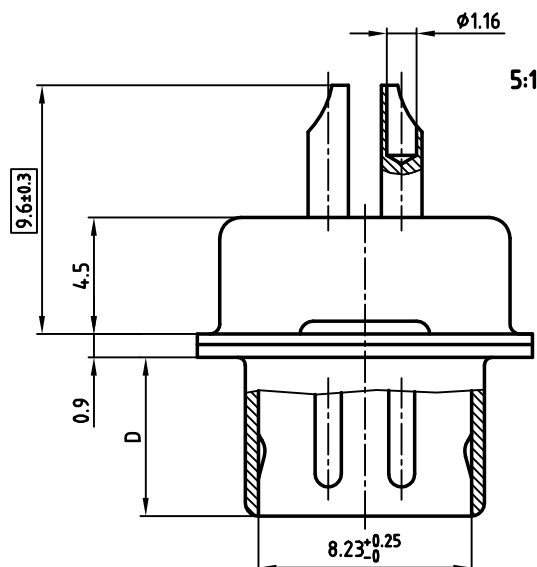
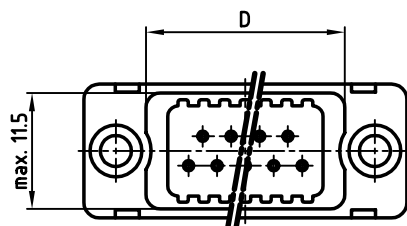
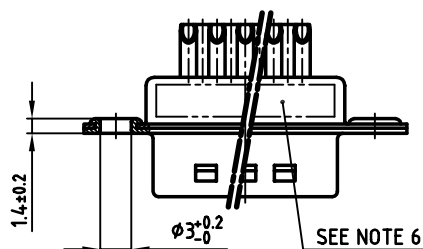
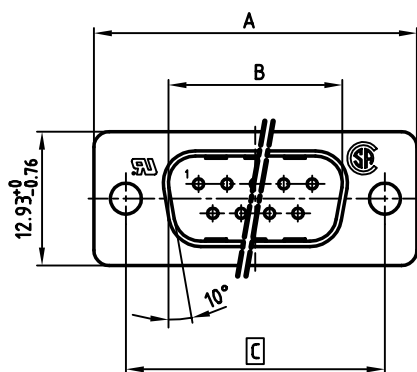


used for: D-SUB FILTER

POS.	A -0.76	B -0.25	C	max. D	Part NO.
9	31.19	16.46	25.00 $^{+0.12}_{-0.13}$	19.60	241A26920X
15	39.52	24.79	33.30 $^{+0.15}_{-0.1}$	27.90	241A26930X
25	53.42	38.50	47.04 ± 0.13	41.60	241A26940X
37	69.70	54.96	63.50 ± 0.13	58.00	241A26950X

**NOTES:**

- METALSHELLS: STEEL; min. 320µ" TIN
- INSULATORS: PBT GF UL 94 V-0, BLACK
- CONTACTS: COPPER ALLOY
PLATING: min. 8µ" HARD GOLD OVER min. 50µ" NICKEL
SOLDER CUP ACCEPTS CABLE AWG 20
- CAPACITANCE: 830pF ±20%
- DIELECTRIC WITHSTANDING VOLTAGE: 424 VDC
- CONNECTOR IS PART MARKED: PART-NO. CONEC Y/WW
- = CRITICAL DIMENSION

APPROVAL * FREIGABE * DEBLOCAGE * AUTOR/ZACON * APPROVAL	
CUSTOMER APPROVAL DATE:	
NAME:	TITLE:
COMPANY NAME:	
APPROVAL * FREIGABE * DEBLOCAGE * AUTOR/ZACON * APPROVAL	

THIS DRAWING MAY NOT BE COPIED OR
REPRODUCED IN ANY WAY, AND MAY NOT
BE PASSED ON TO A THIRD PARTY WITHOUT
WRITTEN PERMISSION.
OWNERSHIP AND COPYRIGHT OF CONEC GmbH
DO NOT ALTER CAD DRAWING BY HAND

rev.	description	date	name

tolerance		
2000	date	name
drawn	21.08.	Parei
appd.	21.08.	Mickenbecker
norm	DIN 41652	
d-old		
CONEC®		

scale:	2:1 (5:1)	
material:	SEE NOTES	
title:	D-SUB FILTER MALE 9-37pos. SOLDER CUP	
dwg no:	AutoCAD 2000	DIN-A
	24K1A031A	3
part no:	SEE TABLE	
		sh: 1/1

Mouser Electronics

Authorized Distributor

Click to View Pricing, Inventory, Delivery & Lifecycle Information:

[CONEC:](#)

[241A26950X](#)