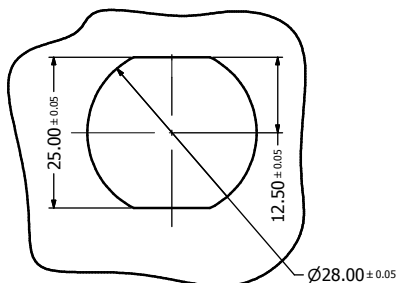
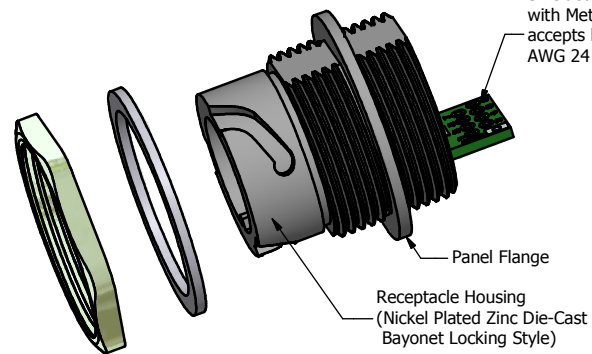
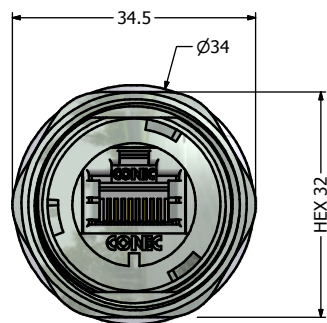
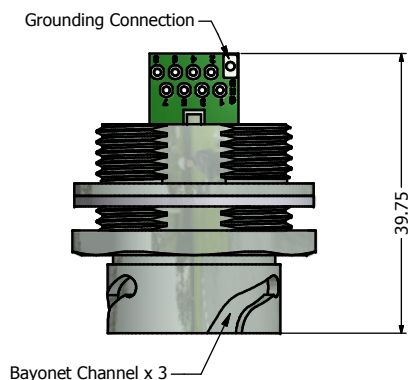


Recommended Single-D
Panel Cutout

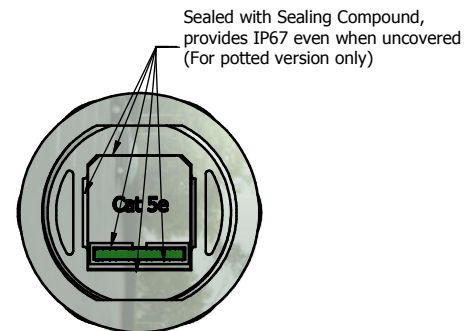
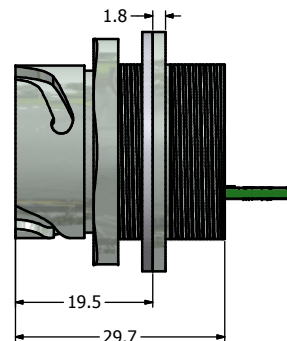


Recommended Double-D
Panel Cutout



Shielded Cat.5e RJ45 PCB Jack
with Metal Shell Grounding
accepts both Solid and Stranded
AWG 24 to 26 Wires

Receptacle Housing
(Nickel Plated Zinc Die-Cast
Bayonet Locking Style)



Sealed with Sealing Compound,
provides IP67 even when uncovered
(For potted version only)

Notes:

1. Electrical Specifications:

- Meets EIA/TIA-568-B.2 Cat.5e Specification
- Contact Resistance: 20mOhm max.
- Insulation Resistance: 500MOhm min. @ 100 VDC
- Current Rating: 1.2A max. at 25°C
- Working Voltage: 100 VDC
- DWV: 1000 VDC/60s Contact to Contact, 1500 VDC/60s Contact to Metal Shell
- Operating Temperature: -40°C to +85°C

2. Material and Finish:

- Receptacle Housing: Zinc Die-Cast, Nickel Plated, UL94 V-0
- Panel Nut: Brass, Finish: Nickel Plated
- Panel Gasket: Silicon, Color: White
- Cat.5e RJ45 PCB Jack Metal Shell: Copper Alloy, Nickel Plated
- Cat.5e RJ45 PCB Jack Plastic Housing: Glass filled PBT UL94 V-0, Color: Black
- Cat.5e RJ45 PCB Jack Contacts: Phosphor Bronze, Finish: 50u" Gold min. over Nickel



3. Connector can be front or rear mounted to a maximum panel thickness of 3.2mm.

4. IP67 rated when covered or fully mated with the appropriate mating connector

5. Recommended Mounting Panel Nut torque is 20 to 25 lb-inch

Directive 2002/95/EC RoHS Compliant

Description	Part Number
Nickel Plated Zinc Die-Cast Version	17-110404
Potted Nickel Plated Zinc Die-Cast Version	17-110414

THIS DRAWING MAY NOT BE COPIED OR REPRODUCED IN ANY WAY, AND MAY NOT BE PASSED ON TO A THIRD PARTY WITHOUT WRITTEN PERMISSION. CONECSHIP AND COPYRIGHT OF CONEC CORPORATION	Customer:			Tolerance Unless otherwise specified			Scale:	Dim. in mm	
	Name	Title	Approval Date	0 PLC ±0.50 1 PLC ±0.38 2 PLC ±0.25 3 PLC ±0.10 ANGLES ±3°	Autodesk Inventor				
				2012	Date	Name	Receptacle Assembly Kit with Nickel Plated Zinc Die-Cast Housing + Shielded Cat. 5e RJ45 PCB Jack Version-II		
				Draw.	Oct. 09	Vincent Ke			
				Appd.	Oct. 09	J. Chaudry			
				Norm					
				D-old					
							Drawing No.: 17K1A361		DIN A3
	a	original					Part No.: SEE PART NUMBER TABLE		Sheet 1/1
	Rev.	Changes	Date				Name		

Mouser Electronics

Authorized Distributor

Click to View Pricing, Inventory, Delivery & Lifecycle Information:

[CONEC:](#)

[17-110404](#)