

4

3

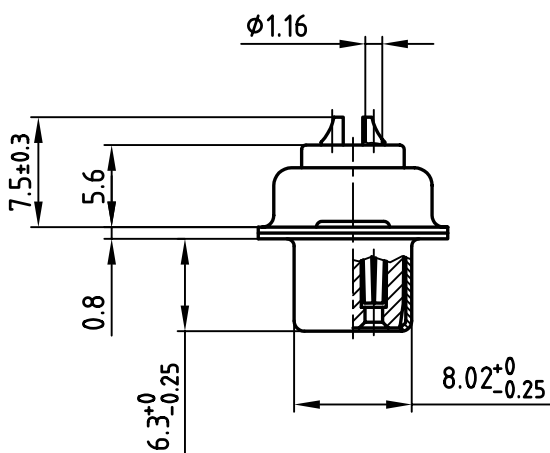
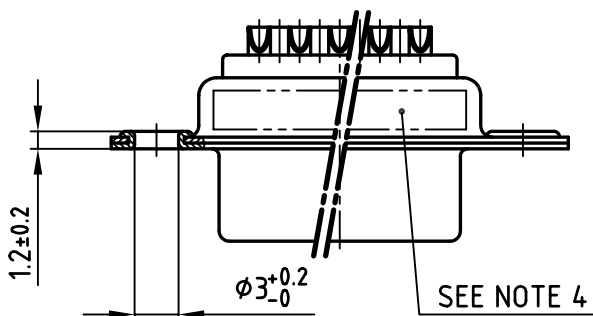
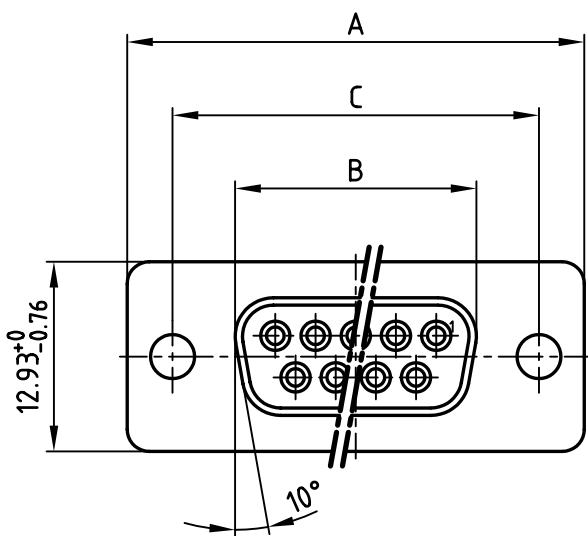
2

1

used for:

D-SUB

POS.	A -0.76	B -0.25	C	Part NO.
9	31.19	16.46	25.00 $^{+0.12}_{-0.13}$	164A10019X
15	39.52	24.79	33.30 $^{+0.15}_{-0.1}$	164A10029X
25	53.42	38.50	47.04 $\pm 0.13$	164A10039X
37	69.70	54.96	63.50 $\pm 0.13$	164A10049X



Directive 2002/95/EC  
"RoHS"  
Compliant

### NOTES:

1. METALSHELLS: STEEL; min. 315µm TIN over 40-80µm NICKEL
2. INSULATORS: PBT GF UL 94 V-0, BLACK
3. CONTACTS: COPPER ALLOY  
PLATING: 8µm HARD GOLD OVER min. 50µm NICKEL  
SOLDER CUP ACCEPTS CABLE AWG 20
4. CONNECTOR IS PART MARKED: PART-NO. CONEC ABC

APPROVAL # FREIGABE # DEBLOCAGE # AUTORIZACION # APPROVAL	
CUSTOMER APPROVAL DATE:	
NAME:	TITLE:
COMPANY NAME:	
APPROVAL # FREIGABE # DEBLOCAGE # AUTORIZACION # APPROVAL	

THIS DRAWING MAY NOT BE COPIED OR  
REPRODUCED IN ANY WAY, AND MAY NOT  
BE PASSED ON TO A THIRD PARTY WITHOUT  
WRITTEN PERMISSION.  
OWNERSHIP AND COPYRIGHT OF CONEC GmbH  
DO NOT ALTER CAD DRAWING BY HAND

1 x b	Ä 2535	18.07.2006	Lehmen
a	Origin		
rev.	description	date	name

tolerance

1998	date	name
drawn	25.08.	Barcinski
appd.	25.08.	Mickenbecker
norm	DIN 41652	
d-old		



dim. in mm

scale:

2:1

material:

SEE NOTES

title:

**D-SUB FEMALE**  
9-37pos. SOLDER CUP

dwg no:

AutoCAD 2006

DIN-A

16K1IFWA

4  
sh: 1/1

part no:

SEE TABLE

**CONEC**<sup>®</sup>

4

3

2

1

# Mouser Electronics

Authorized Distributor

Click to View Pricing, Inventory, Delivery & Lifecycle Information:

[CONEC:](#)

[164C10049X](#)