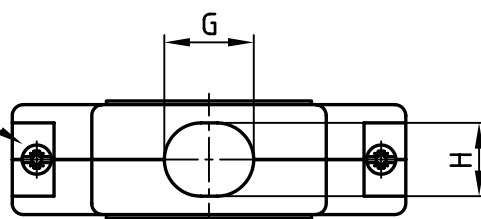


COMBI
CROSS RECESSED SCREW
(Z - SIZE 1)
SLOTTED SCREW
(SLOTT WIDTH 0.8mm)



TOP VIEW
DRAWN WITHOUT
CABLE BUSHING

Pos.	A	B	C	D	E	ØF	G ^{+0.2}	H	Part NO. Bulk package	Part NO. Single package
9	31.7	25.0	30.0	32.7	15.0	5.0	9.0	9.0	165X17459X	165X17459XE
15	40.0	33.3	32.0	34.7	15.0	5.0	9.0	9.0	165X17469X	165X17469XE
25	53.7	47.0	35.0	37.7	15.0	7.0	12.2	10.0	165X17479X	165X17479XE
37	70.2	63.5	41.0	43.7	15.0	7.0	13.5	11.0	165X17489X	165X17489XE
50	67.8	61.1	41.0	43.7	17.7	9.3	15.3	12.7	165X17499X	165X17499XE

Directive 2002/95/EC
"RoHS"
Compliant

APPROVAL * FREIGABE * DEBLOCAGE * AUTORIZACION * APPROVAL	
CUSTOMER APPROVAL DATE:	
NAME:	TITLE:
COMPANY NAME:	
APPROVAL * FREIGABE * DEBLOCAGE * AUTORIZACION * APPROVAL	

NOTES:

1. CASE: ZINC DIE CAST; NICKEL PLATED
2. SHORT SCREW: STEEL; NICKEL PLATED
3. CABLE BUSHING: TPE
4. CABLE STRAIN RELIEF: STEEL; NICKEL PLATED
5. ATTENUATION FACTOR >60dB BETWEEN 300 MHz AND 900 MHz

THIS DRAWING MAY NOT BE COPIED OR REPRODUCED IN ANY WAY, AND MAY NOT BE PASSED ON TO A THIRD PARTY WITHOUT WRITTEN PERMISSION. OWNERSHIP AND COPYRIGHT OF CONEC GmbH DO NOT ALTER CAD DRAWING BY HAND	tolerance		dim. in mm	scale: 1:1	
				material: SEE NOTES	
	2007 date name		title:		METAL HOOD 9-50pos. EMI / RFI SHIELDING with straight cable exit and short screws M3
	drawn 17.07. Lehmenkühler		dwg no: AutoCAD 2006		
	appd. 17.07. Kühle		part no: SEE TABLE		
norm		DIN-A 4			
d-old		sh: 1/1			
a	Origin	CONEC®			
rev.	description	date	name		

Mouser Electronics

Authorized Distributor

Click to View Pricing, Inventory, Delivery & Lifecycle Information:

[CONEC:](#)

[165X17459X](#)