

4

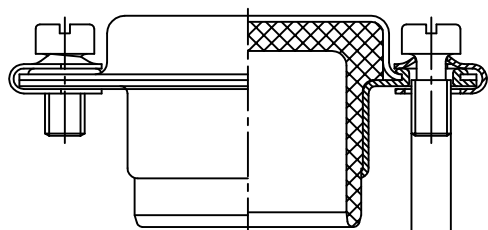
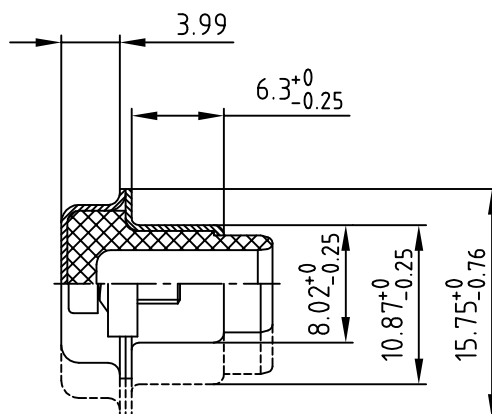
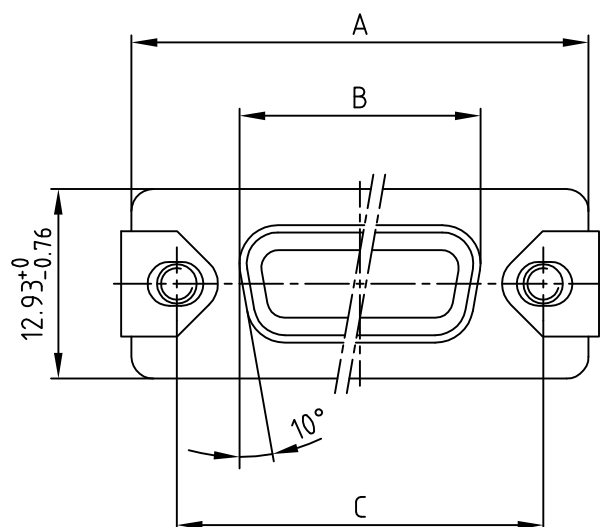
3

2

1

used for:

D-SUB



4-40 UNC

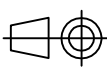

NOTES:

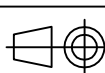
- Ⓒ 1. METALSHELLS: COPPER ALLOY;
min. 315µin TIN over 40-80µin Nickel
2. INSULATORS: TPE
- Ⓒ 3. CLAMPS: STAINLESS STEEL
- Ⓒ 4. SCREWS: STAINLESS STEEL

Directive 2002/95/EC RoHS compliant

| Shellsize | A -0.76 | B -0.25 | C | Part No: Bulk package | Part No: Ⓒ Single package |
|-----------|---------|---------|--------------------------|--------------------------|------------------------------|
| 1 | 31.19 | 16.46 | 25.00 $^{+0.12}_{-0.13}$ | 165X14769X | 165X14769XE |
| 2 | 39.52 | 24.79 | 33.30 $^{+0.15}_{-0.1}$ | 165X14779X | 165X14779XE |
| 3 | 53.42 | 38.50 | 47.04 ± 0.13 | 165X14789X | 165X14789XE |
| 4 | 69.70 | 54.96 | 63.50 ± 0.13 | 165X14799X | 165X14799XE |
| 5 | 67.31 | 52.55 | 61.10 $^{+0.14}_{-0.11}$ | 165X14809X | 165X14809XE |

THIS DRAWING MAY NOT BE COPIED OR
REPRODUCED IN ANY WAY, AND MAY NOT
BE PASSED ON TO A THIRD PARTY WITHOUT
WRITTEN PERMISSION.
OWNERSHIP AND COPYRIGHT OF CONEC GmbH
DO NOT ALTER CAD DRAWING BY HAND

| | | | | | | |
|-------|-------------|------------|------|---|-----------|---|
| | | | | tolerance | |  |
| | | | | 2001 | date | name |
| | | | | drawn | 10.09. | E. Mickenbecker |
| | | | | appd. | 10.09. | A. Mickenbecker |
| | | | | norm | DIN 41652 | |
| 3 x c | Ä4329 | 11.06.2012 | K.H. | d-old | | |
| 1 x b | Ä4033 | 30.06.2011 | K.H. | | | |
| a | Original | | | | | |
| rev. | description | date | name |  | | |



scale: 2:1
material: SEE NOTES

title:
HOOD 9-50pos.
for plug connector
water resistant, shielded for EMI/RFI

dwg no: AutoCAD 2000 DIN-A
16K1A290A 4
sh: 1/1

part no: SEE TABLE

4

3

2

1

Mouser Electronics

Authorized Distributor

Click to View Pricing, Inventory, Delivery & Lifecycle Information:

[CONEC:](#)

[165X14769X](#)