

4

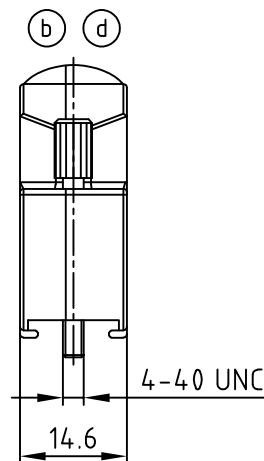
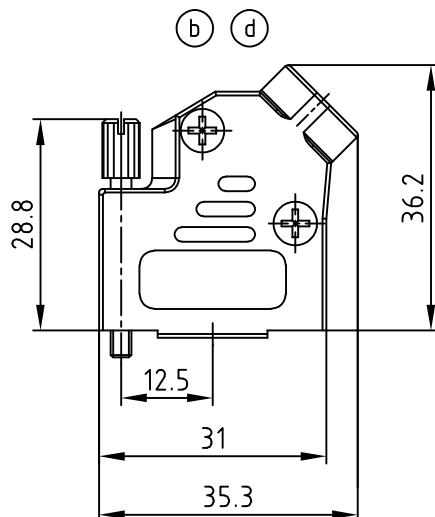
3

2

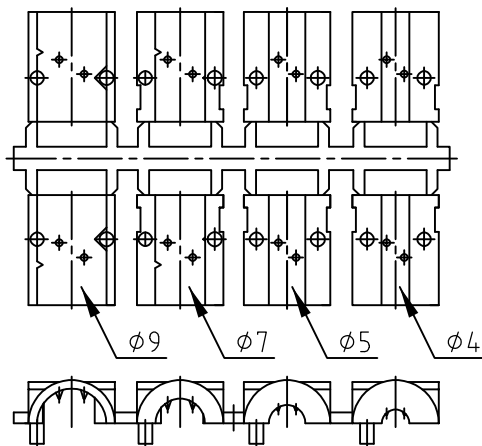
1

used for:

D-SUB



(b) (d) Strain relief



(c)

(d) TECHNICAL DATA:

1. BACKSHELL HALVES: ZINC DIE-CAST; NICKEL PLATED

2. ASSEMBLY SCREWS: STEEL; TIN PLATED

(e) 3. JACK SCREW: BRASS ALLOY; NICKEL PLATED

4. CABLE STRAIN RELIEF: PC

5. TEMPERATURE RANGE: -40°C to $+120^{\circ}\text{C}$ 6. ATTENUATION FACTOR: $>40\text{dB}$ BETWEEN 30 MHz AND 2 GHz

7. ASSEMBLY INSTRUCTION SEE SHEET 2

RoHS compliant

(e)

THIS DRAWING MAY NOT BE COPIED OR
REPRODUCED IN ANY WAY, AND MAY NOT
BE PASSED ON TO A THIRD PARTY WITHOUT
WRITTEN PERMISSION.
OWNERSHIP AND COPYRIGHT OF CONEC GmbH
DO NOT ALTER CAD DRAWING BY HAND

				tolerance			scale:	1:1
2 x e	Ä 5748	03.08.2015	Unkrüer	appd.	02.10.	name		
5 x d	Ä 4171	02.01.2012	Lehmen.	norm			material:	SEE NOTES
2 x c	Ä 2754	23.07.2007	Lehmen.	d-old			title:	
3 x b	Ä 2480	06.04.2006	Lehmen.					
a	Original						dwg no:	AutoCAD
rev.	description	date	name					DIN-A

METAL HOOD
9pos. EMI/RFI SHIELDING
with side cable entry and jack screw 4-40 UNC

product no: (d) (c) 165X02689X

4

3

2

1

4

3

2

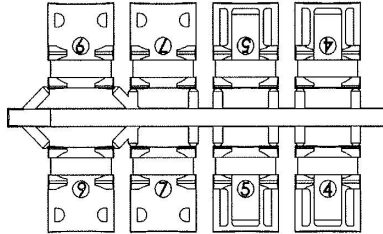
1

used for:

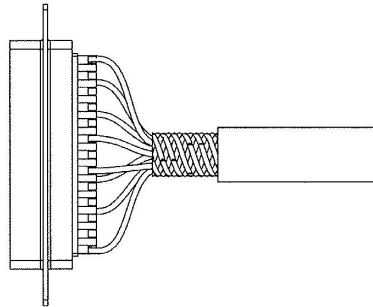
D-SUB

ASSEMBLY INSTRUCTION:

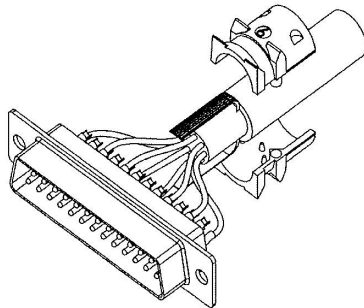
Use two halves of strain relief
different sizes can be mixed



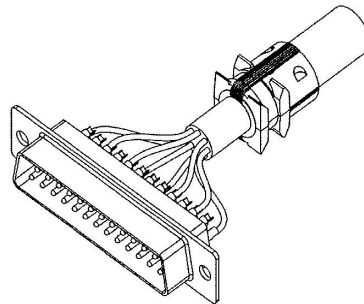
Strip cable 18mm and
shape cable to two pigtails



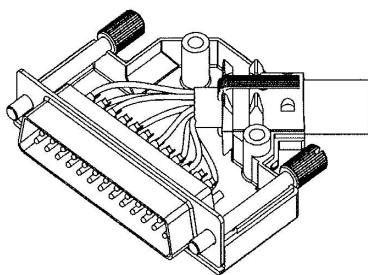
Attach the strain relief around the cable



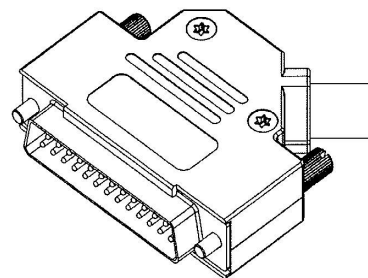
Bend cable shielding back
on outside of strain relief



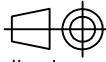

Mount connector and cable
into the backshell

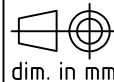


Assemble the other half
screwing force: 100-120 Ncm.



THIS DRAWING MAY NOT BE COPIED OR
REPRODUCED IN ANY WAY, AND MAY NOT
BE PASSED ON TO A THIRD PARTY WITHOUT
WRITTEN PERMISSION.
OWNERSHIP AND COPYRIGHT OF CONEC GmbH
DO NOT ALTER CAD DRAWING BY HAND

				tolerance		 dim. in mm
rev.	description	date	name	2012	date	
a	Original			drawn	02.01.	Lehmenkühler
				appd.	02.01.	Fischer
				norm		
				d-old		
						



scale:

material:

title:

ASSEMBLY INSTRUCTION
METAL HOOD 9pos. EMI/RFI SHIELDING
with side cable entry and jack screw 4-40 UNC

dwg no:

16K1A058A

DIN-A

4

sh:2/2

part no:

SEE SHEET 1

4

3

2

1

Mouser Electronics

Authorized Distributor

Click to View Pricing, Inventory, Delivery & Lifecycle Information:

CONEC:

165X02689X