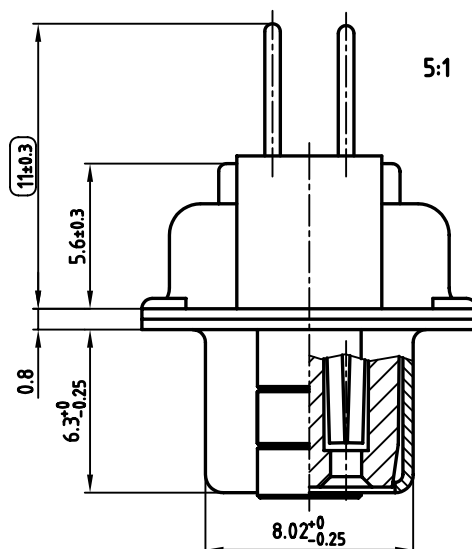
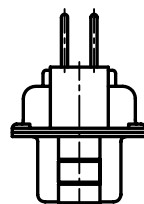
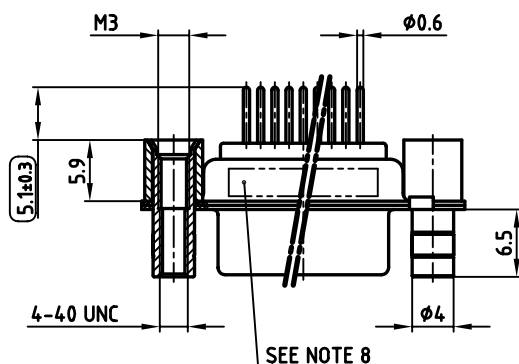
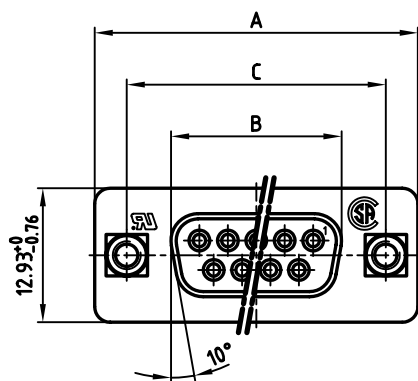


used for: D-SUB

No. of pos.	A -0.76	B -0.25	C	Part NO.
9	31.19	16.46	25.00 ^{+0.12} _{-0.13}	164A12919X
15	39.52	24.79	33.30 ^{+0.15} _{-0.1}	164A12929X
25	53.42	38.50	47.04 ^{+0.13} _{-0.13}	164A12939X
37	69.70	54.96	63.50 ^{+0.13} _{-0.13}	164A12949X



NOTES:

- METAL SHELLS: STEEL; min. 320µ" TIN
- INSULATORS: PBT GF UL 94 V-0, BLACK
- CONTACTS: COPPER ALLOY
PLATING: 8µ" HARD GOLD OVER min. 50µ" NICKEL
- THREADED REAR SPACER/FRONT THREADED LOCK:
COPPER ALLOY; min. 200µ" TIN over 80µ" NICKEL
- SLEEVE: COPPER ALLOY; min. 200µ" TIN over 80µ" NICKEL
- P.C.B. HOLE DRILLINGS ON SHEET 2
- MAXIMUM TORQUE VALUE FOR THREAD: 6" LBS
- CONNECTOR IS PART MARKED: PART-NO. CONEC ABC
- = CHECK DIMENSION

Directive 2002/95/EC
RoHS
Compliant

APPROVAL * FREIGABE * DEBLOCAGE * AUTORIZACION * APPROVAL	
CUSTOMER APPROVAL DATE:	
NAME:	TITLE:
COMPANY NAME:	
APPROVAL * FREIGABE * DEBLOCAGE * AUTORIZACION * APPROVAL	

THIS DRAWING MAY NOT BE COPIED OR
REPRODUCED IN ANY WAY, AND MAY NOT
BE PASSED ON TO A THIRD PARTY, WITHOUT
WRITTEN PERMISSION.
OWNERSHIP AND COPYRIGHT OF CONEC GmbH
DO NOT ALTER CAD DRAWING BY HAND

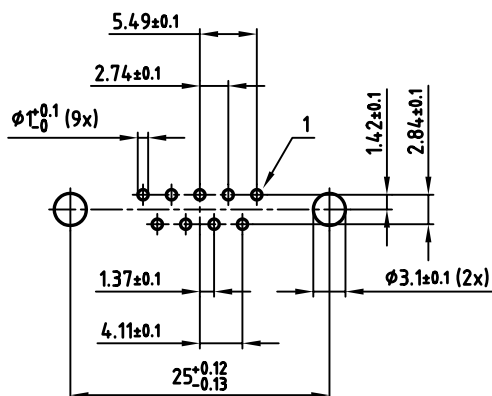
rev.	description	date	name
a	Origin		

tolerance		dim. in mm	name
2006	date		
drawn	07.02.		Lehmenkühler
appd.	07.02.		Mickenbecker
norm			DIN 41652
d-old			

CONEC

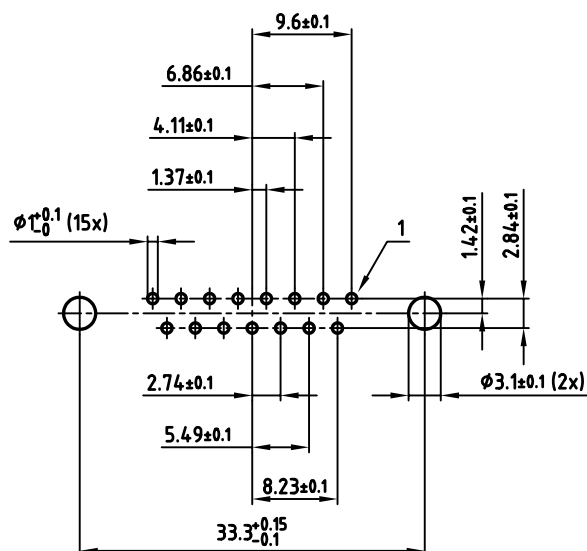
scale:	2:1 (5:1)
material:	SEE NOTES
title:	D-SUB FEMALE 9-37pos. SOLDER PIN STRAIGHT with threaded rear spacer, front threaded lock
dwg no:	AutoCAD 2004 DIN-A 3 sh:1/2
part no:	SEE TABLE

9 pos.

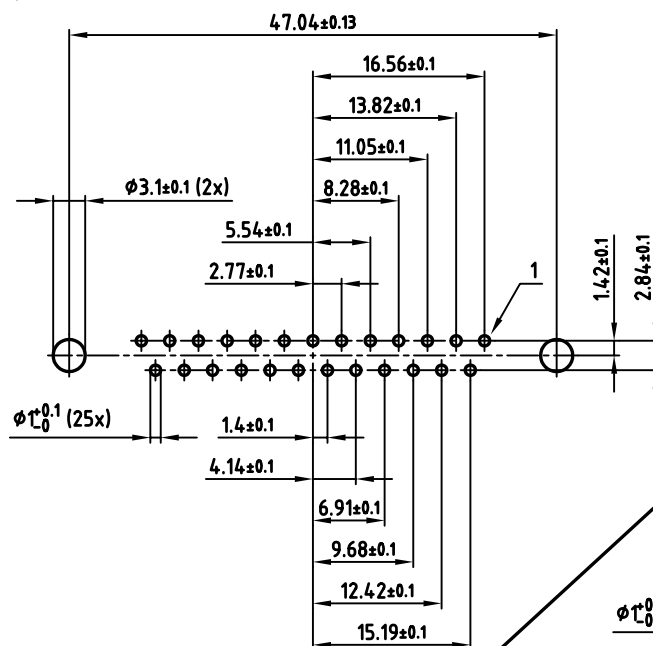


15 pos.

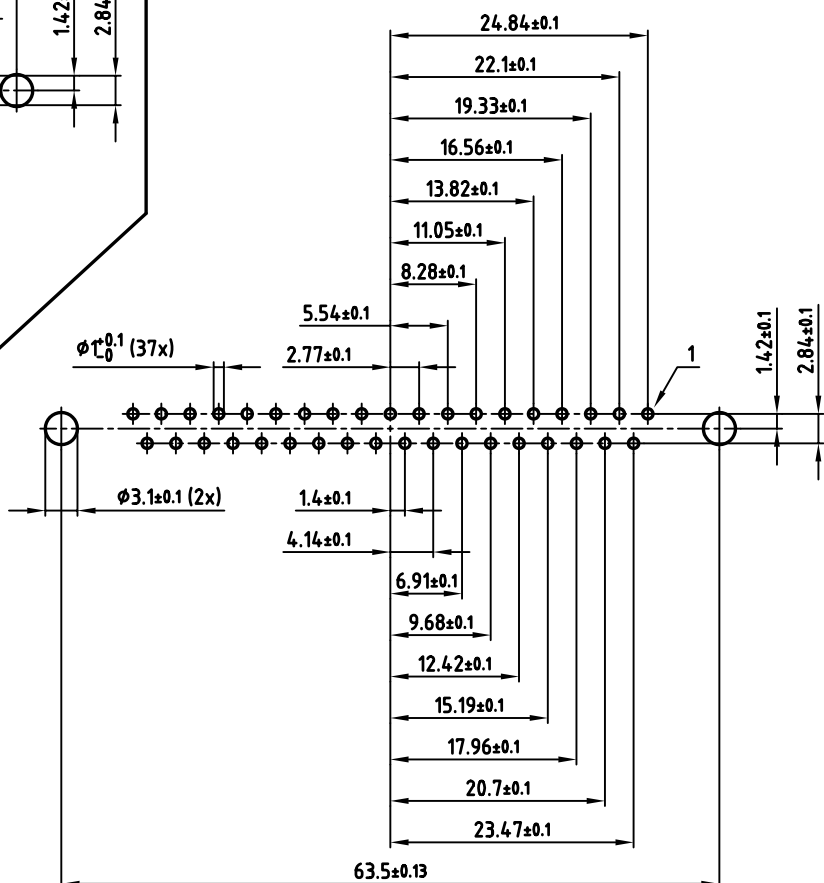
used for: D-SUB



25 pos.



37 pos.



APPROVAL * FREIGABE * DEBLOCAGE * AUTORIZACION * APPROVAL	
CUSTOMER APPROVAL DATE:	
NAME:	TITLE:
COMPANY NAME:	
APPROVAL * FREIGABE * DEBLOCAGE * AUTORIZACION * APPROVAL	

THIS DRAWING MAY NOT BE COPIED OR REPRODUCED IN ANY WAY, AND MAY NOT BE PASSED ON TO A THIRD PARTY WITHOUT WRITTEN PERMISSION. OWNERSHIP AND COPYRIGHT OF CONEC GmbH DO NOT ALTER CAD DRAWING BY HAND

rev.	description	date	name
a	Origin		

tolerance	dim. in mm
2006	date
drawn	07.02. Lehmenkühler
appd.	07.02. Mickenbecker
norm	DIN 41652
d-old	
CONEC®	

scale:	2:1
material:	SEE SHEET 1
title:	P.C.B. HOLE DRILLINGS D-SUB FEMALE 9-37pos. SOLDER PIN with threaded rear spacer, front threaded lock
dwg no:	AutoCAD 2004 DIN-A
	16K1A1728 3 sh:2/2
part no:	SEE SHEET 1

Mouser Electronics

Authorized Distributor

Click to View Pricing, Inventory, Delivery & Lifecycle Information:

[CONEC:](#)

[164A12919X](#)