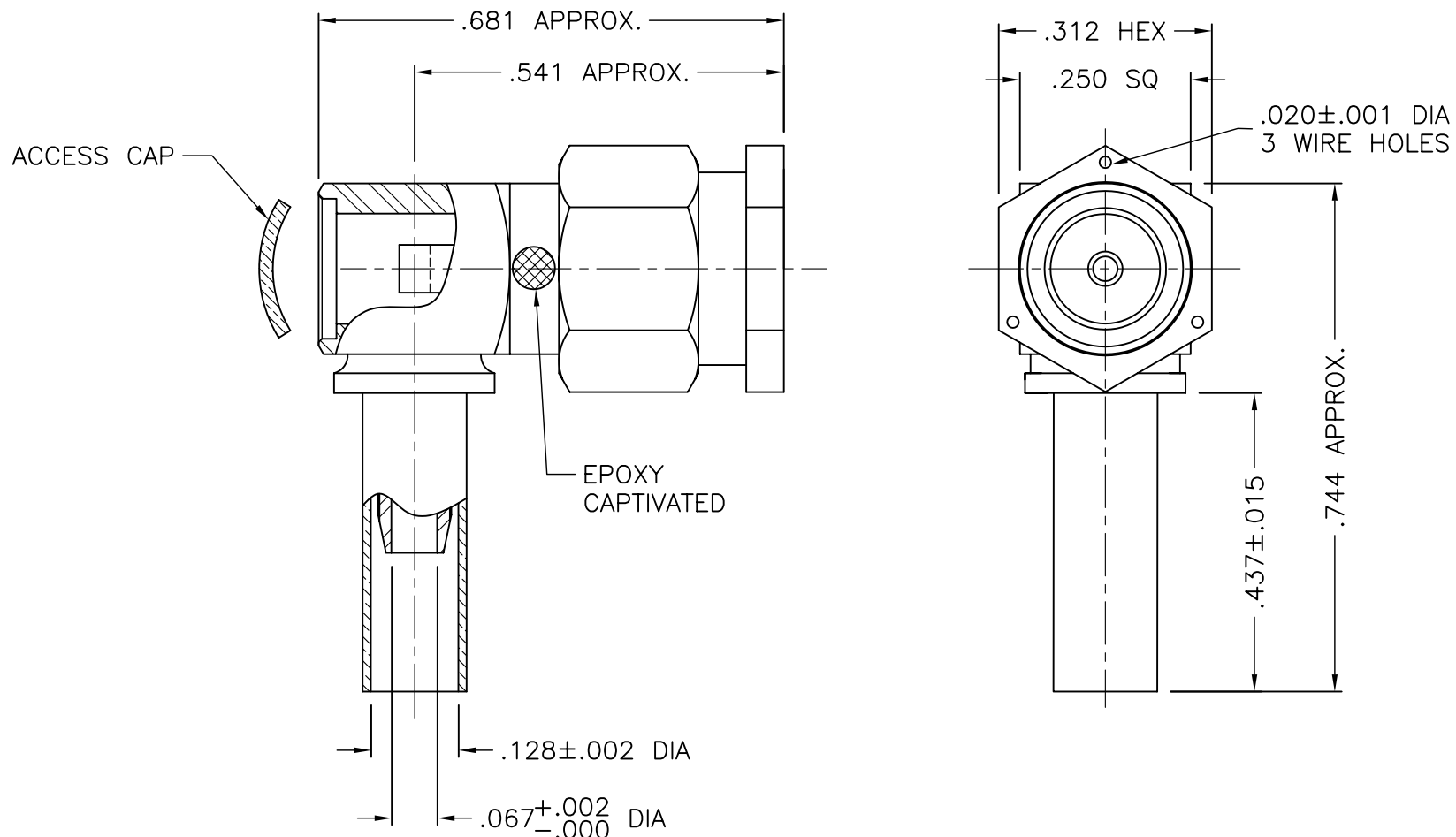




1307-037-K00E-2



NOTES:

1. ASSEMBLED CONNECTOR INTERFACE IS DESIGNED IN ACCORDANCE WITH MIL-STD-348.
2. MATERIAL: BODY & COUPLING NUT - CORROSION RESISTANT STEEL PER ASTM A582
CONTACT - BRASS PER ASTM B16.
GASKET - SILICONE RUBBER PER A-A-59588
INSULATORS - TEFLON PER ASTM D4894
CRIMP SLEEVE - D.H.P. COPPER CDA ALLOY 122
3. FINISHES: BODY & COUPLING NUT - PASSIVATE PER AMS-QQ-P-35
ACCESS CAP - NICKEL PLATE PER AMS-QQ-N-290
CONTACT - GOLD PLATE PER ASTM B488
CRIMP SLEEVE - GOLD PLATE PER ASTM B488

UNLESS OTHERWISE SPECIFIED: TOLERANCES: 3 PLACES = ± 0.005 , 2 PLACES = ± 0.02 , ANGLES = $\pm 1/2^\circ$, SURFACE FINISH = 63

-	OUTLINE	3/22/05
ALT.	REVISIONS	DATE

THESE DRAWINGS AND SPECIFICATIONS ARE THE PROPERTY OF DELTA ELECTRONICS MFG CORP. AND SHALL NOT BE REPRODUCED, OR COPIED OR USED AS THE BASIS FOR THE MANUFACTURE OR SALE OF APPARATUS OR DEVICES WITHOUT THEIR EXPRESS WRITTEN CONSENT.

M39012/56-3026

DELTA ELECTRONICS MFG. CORP. Beverly, MA 01915

TITLE: SMA RIGHT ANGLE CRIMP PLUG FOR RG-174
179B, 187A, 188A, 316/U CABLES - CAPTIVE CONTACT

Drawn by BJM 3/22/05	Scale 4/1	Ckd. by MR	Engr Appd MR	FILE NAME: 1307037K00E-002T
----------------------------	--------------	---------------	-----------------	--------------------------------

CODE IDENT.-00795

1307-037-K00E-2

Mouser Electronics

Authorized Distributor

Click to View Pricing, Inventory, Delivery & Lifecycle Information:

[Delta Electronics Mfg Corp:](#)

[1307037K00E-002](#)