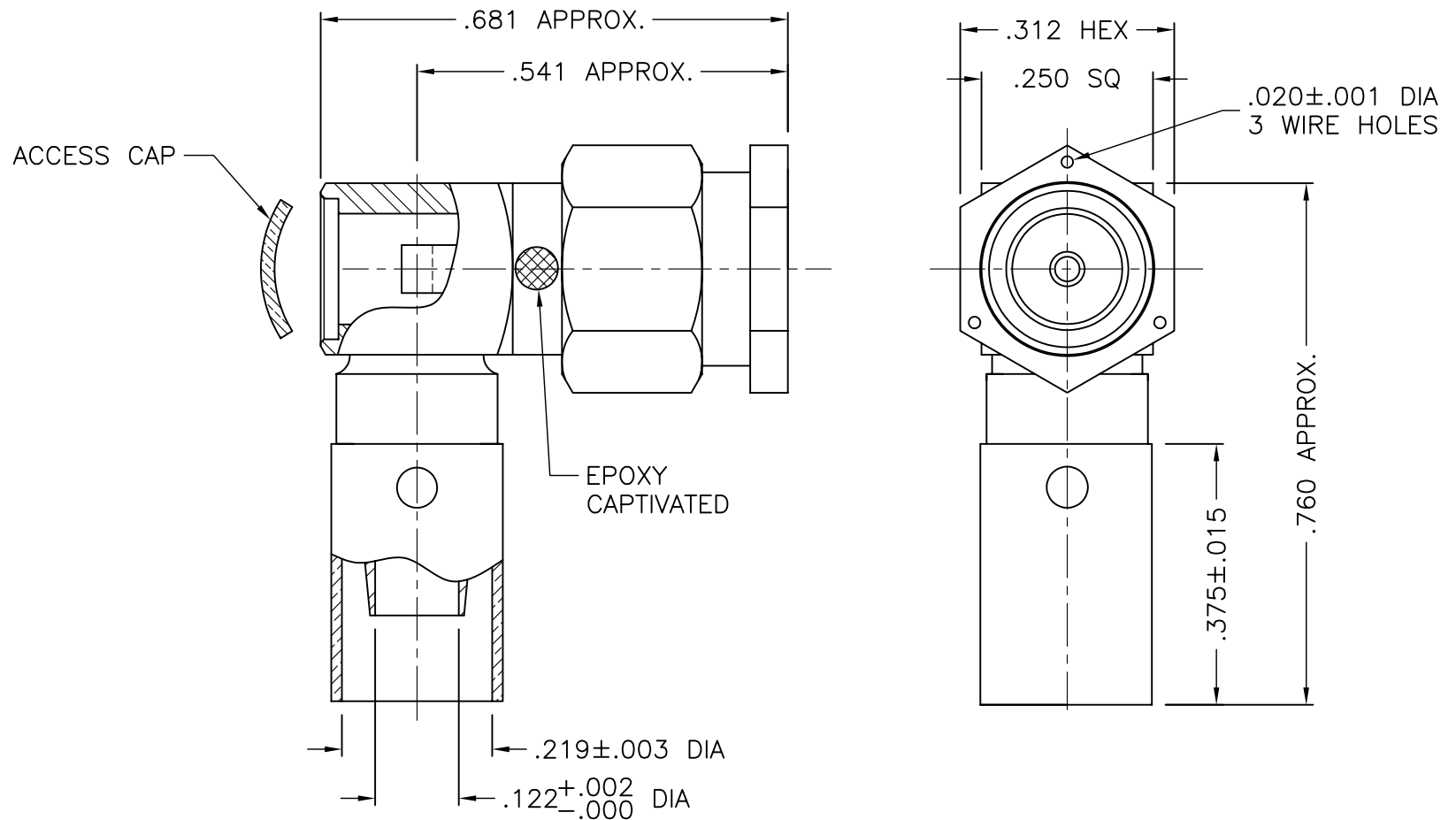




1305-015-K00E



NOTES:

1. ASSEMBLED CONNECTOR INTERFACE IS DESIGNED IN ACCORDANCE WITH MIL-STD-348.
2. MATERIAL: BODY & COUPLING NUT - CORROSION RESISTANT STEEL PER ASTM A582
CONTACT - BRASS PER ASTM B16.
GASKET - SILICONE RUBBER PER A-A-59588
INSULATORS - TEFLON PER ASTM D4894
SOLDER SLEEVE - D.H.P. COPPER CDA ALLOY 122
3. FINISHES: BODY - GOLD PLATE PER ASTM B488
COUPLING NUT - PASSIVATE PER AMS-QQ-P-35
CONTACT - GOLD PLATE PER ASTM B488
SOLDER SLEEVE - GOLD PLATE PER ASTM B488

M39012/56-3009

DELTA ELECTRONICS MFG. CORP. Beverly, MA 01915

TITLE: SMA RIGHT ANGLE SOLDER PLUG
FOR RG-142B/U, 223/U AND 400/U CABLES

Drawn by BJM 3/22/05	Scale 4/1	Ckd. by MR	Engr Appd MR	FILE NAME: 1305015K00E-000T
----------------------------	--------------	---------------	-----------------	--------------------------------

UNLESS OTHERWISE SPECIFIED: TOLERANCES: 3 PLACES = ± 0.005 , 2 PLACES = ± 0.02 , ANGLES = $\pm 1/2^\circ$, SURFACE FINISH = 63

-	OUTLINE	3/22/05
ALT.	REVISIONS	DATE

THESE DRAWINGS AND SPECIFICATIONS ARE THE PROPERTY OF DELTA ELECTRONICS MFG CORP. AND SHALL NOT BE REPRODUCED, OR COPIED OR USED AS THE BASIS FOR THE MANUFACTURE OR SALE OF APPARATUS OR DEVICES WITHOUT THEIR EXPRESS WRITTEN CONSENT.

CODE IDENT.-00795

1305-015-K00E

Mouser Electronics

Authorized Distributor

Click to View Pricing, Inventory, Delivery & Lifecycle Information:

Delta:

[1305015K00E-000](#)