

PICMG 1.3 Passive Backplane

Selection Guide

PAC series wall-mount chassis
4U/5U rack-mount chassis
1U/2U rack-mount chassis

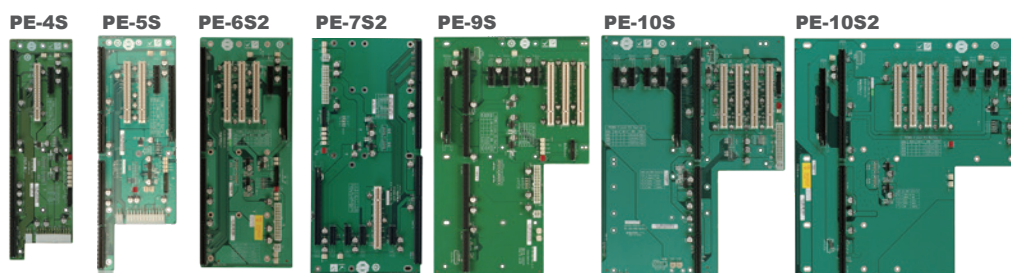
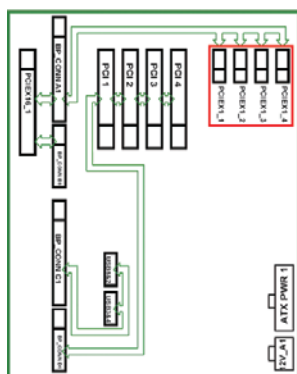
PICMG 1.3 (PCIe+PCI)	Model	PE-2SD1	PE-2SD2	PE-4S	PE-4S2	PE-6S	PE-6S2	PE-6S	PE-6S2	PE-6SD	PE-6SD3
Total Slot		2	2	4	4	5	5	6	6	5	5
Expansion Slots	PCIe Slots	x16 *		1	1	1	1	1	1	1	1
		x4		1		1		1			1
		x1					3	2		3	
	PCI-X Slots										
	PCI Slots		1	1	2	2		2	3		2
USB Connectors by Pin Header		4	4	4	4	4	4	4	4	4	4
PSU Type		24+4-pin ATX	24+4-pin ATX	24+4-pin ATX	24+4-pin ATX	24+4-pin ATX	24+4-pin ATX	24+4-pin ATX	24+4-pin ATX	24+4-pin ATX	24+4-pin ATX
Chassis		RACK-1150-PE	RACK-1150-PE	N/A	N/A	RACK-500G	RACK-500G	RACK-305G RACK-360G RACK-3000G PAC-1700G PAC-125	PAC-106G PAC-1000G	N/A	N/A
Note		1U Type	1U Type							2U Type	2U Type

PICMG 1.3 (PCIe+PCI)	Model	PE-7S	PE-7S2	PE-8S	PE-9S	PE-10S	PE-10S2	PE-13SD	PXE-9S2	PXE-12S	PXE-13S	PXE-19S2
Total Slot		7	7	8	9	10	10	13	9	12	13	19
Expansion Slots	PCIe Slots	x16 *	1	1	1	1	1	1/1	1	1	1	1
		x4						1/0	3			
		x1	2	4	3	4	4	0/4	0		3	1
	PCI-X Slots								0	4		
	PCI Slots	3	1	3	3	4	4	2/2	4	4	8	16
USB Connectors by Pin Header		4	4	4	4	4	4	8	4	4	4	4
PSU Type		24+4-pin ATX	24+4-pin ATX	24+4-pin ATX	24+4-pin ATX	24+4-pin ATX	24+4-pin ATX	Dual 24+4-pin ATX	24+4-pin ATX	24+4-pin ATX	24+4-pin ATX	24+4-pin ATX
Chassis		PAC-1700G	PAC-1700G	PAC-125G	N/A	RACK-305G RACK-360G RACK-3000G	RACK-3000G RACK-305G RACK-360G	RACK-3000G RACK-305G RACK-360G	RACK-3000G RACK-305G RACK-360G	RACK-3000G RACK-305G RACK-360G	RACK-3000G RACK-305G RACK-360G	N/A
Note								Dual System Backplane	PCIe to PCIe Switch Backplane	PCIe to PCI-X Bridge Backplane	PCIe to PCI Bridge Backplane	

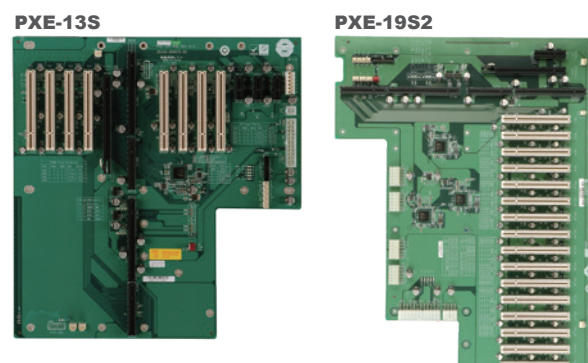
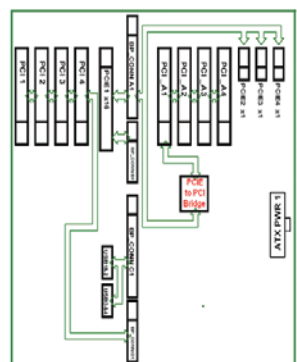
*When using a PCIe x16 add-on card, the length of the card must not exceed 167mm or 6.57 inches.

IEI Graphics Grade Backplane Solution

The graphics grade backplane solution targets the applications which concern system speed and performance. It has higher performance over cost ratio than the previous PICMG 1.0 solution.

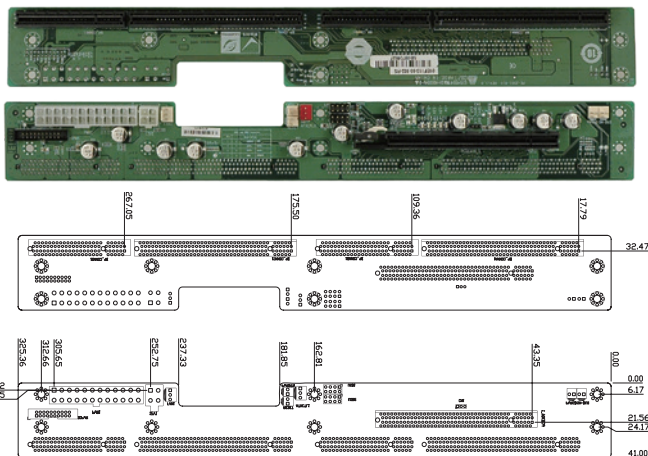


- Twenty PCIe lanes in total
- One PCIe x16 slot
- Up to four PCIe x1 or one PCIe x4 slot
- Up to four local PCI slots (w/o bridge)



- Twenty PCIe lanes in total
- One PCIe x16 slot
- Up to four PCIe x1 slots
- PCI slots expandable via PCIe to PCI bridge

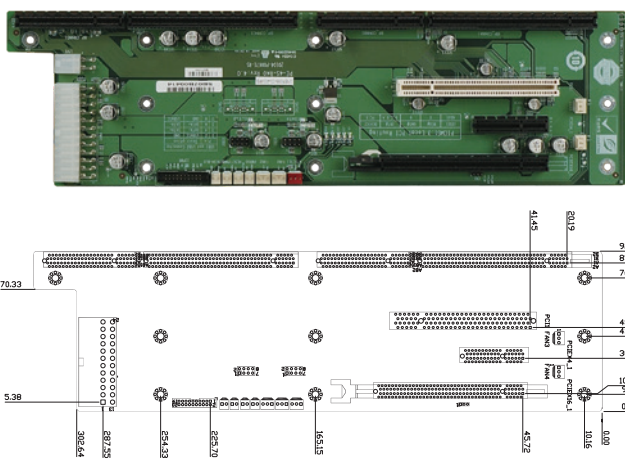
PE-2SD1-R10

For 1U
system!

Ordering Information

PE-2SD1-R10	2-slot backplane with one PCIe slot
RACK-1150G-PE	1U full-size rack-mount chassis

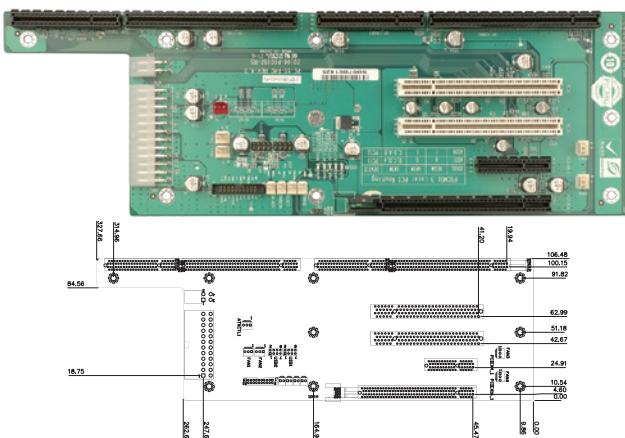
PE-4S-R40

Mounting holes
compatible with PCI-4S

Ordering Information

PE-4S-R40	4-slot backplane with one PCIe x16 slot, one PCIe x4 slot and one PCI slot
-----------	--

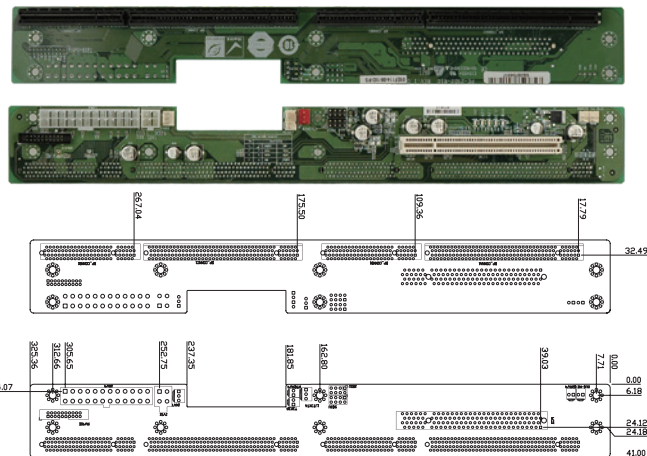
PE-5S-R40

Mounting holes
compatible with PCI-5S

Ordering Information

PE-5S-R40	5-slot backplane with one PCIe x16 slot, one PCIe x4 slot and two PCI slots
RACK-500G	5U 5-slot full-size rack-mount chassis

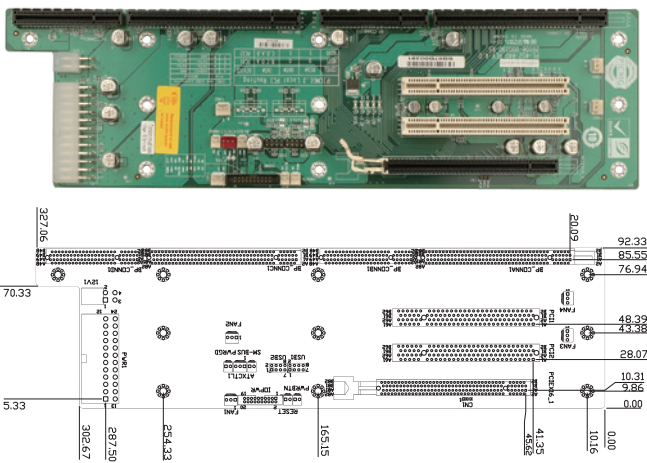
PE-2SD2-R10

For 1U
system!

Ordering Information

PE-2SD2-R10	2-slot backplane with one PCI slot
RACK-1150G-PE	1U full-size rack-mount chassis

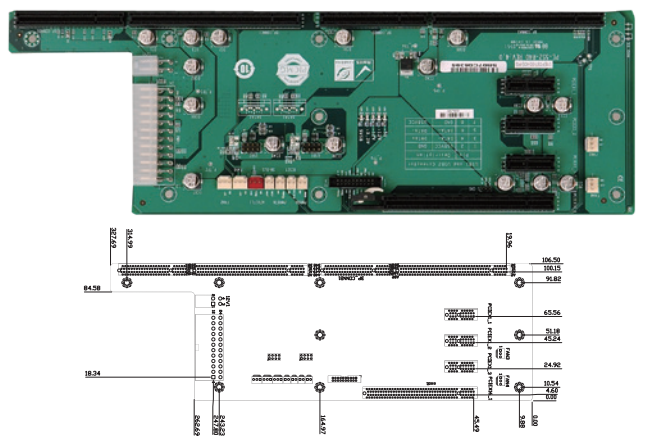
PE-4S2-R40

Mounting holes
compatible with PCI-4S

Ordering Information

PE-4S2-R40	4-slot backplane with one PCIe x16 slot and two PCI slots
------------	---

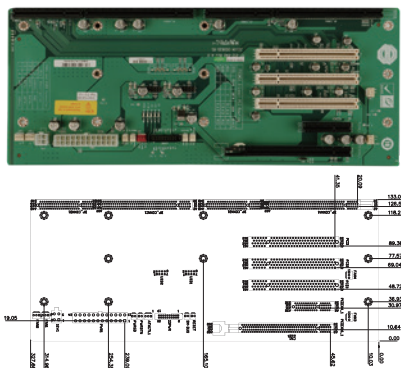
PE-5S2-R40

Mounting holes
compatible with PCI-5S

Ordering Information

PE-5S2-R40	5-slot backplane with one PCIe x16 slot and three PCI slots
RACK-500G	5U 5-slot full-size rack-mount chassis

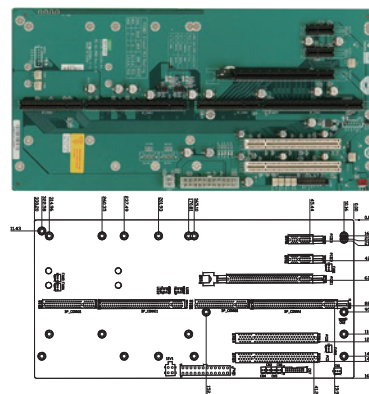
PE-6S-R41

Mounting holes
compatible with PCI-7S

Ordering Information

PE-6S-R41	6-slot backplane with one PCIe x16 slot, two PCIe x1 slots and two PCI slots
RACK-305G	4U 14-slot full-size rack-mount chassis
RACK-360G	4U 14-slot full-size rack-mount chassis
RACK-3000G	4U 14-slot full-size rack-mount chassis
PAC-1700G	7-slot full-size compact chassis
PAC-125G	10-slot full-size compact chassis

PE-6S2-R40

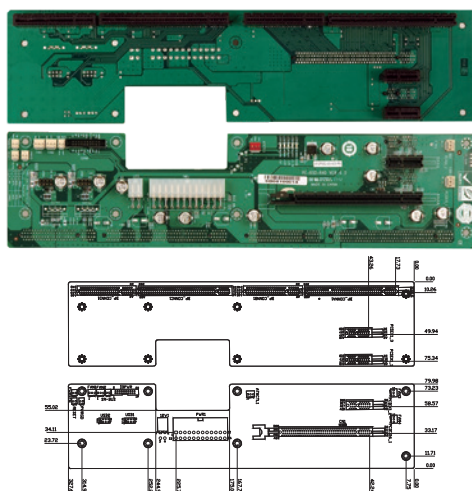
Mounting holes
compatible with PCI-6S

Ordering Information

PE-6S2-R40	6-slot backplane with one PCIe x16 slot, one PCIe x4 slot and three PCI slots
PAC-106G *	6-slot full-size compact chassis
PAC-1000G	6-slot full-size compact chassis

* When using a PCIe x16 add-on card, the length of the card must not exceed 167mm or 6.57 inches.

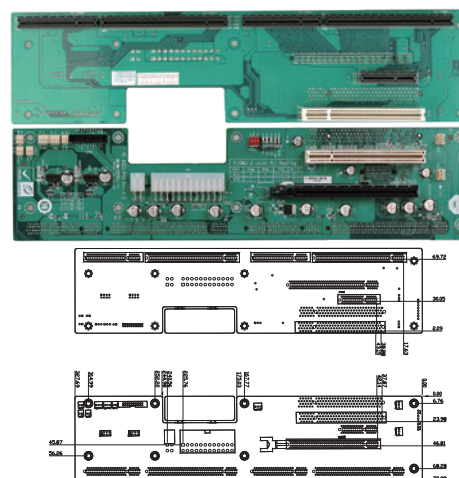
PE-6SD-R40

Mounting holes
compatible with PCI-6SD
2U Type

Ordering Information

PE-6SD-R40	5-slot backplane with one PCIe x16 slot and three PCIe x1 slots
------------	---

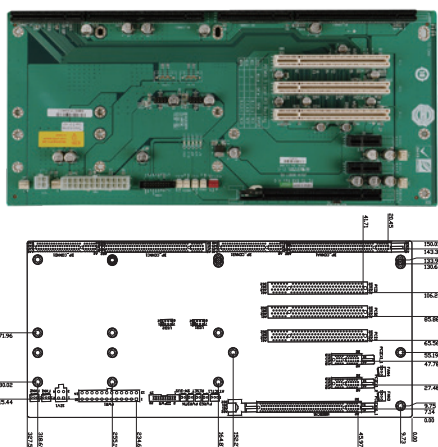
PE-6SD3-R40

Mounting holes
compatible with PCI-6SD

Ordering Information

PE-6SD3-R40	5-slot backplane with one PCIe x16 slot, one PCIe x4 slot and two PCI slots
-------------	---

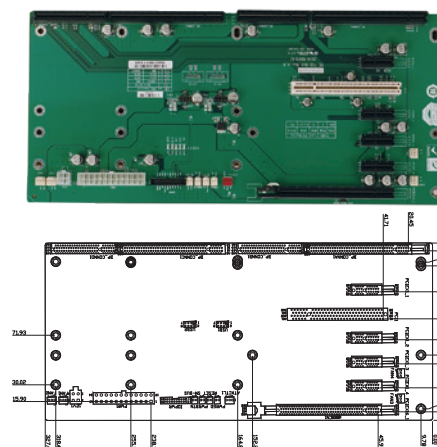
PE-7S-R40

Mounting holes
compatible with PCI-7S

Ordering Information

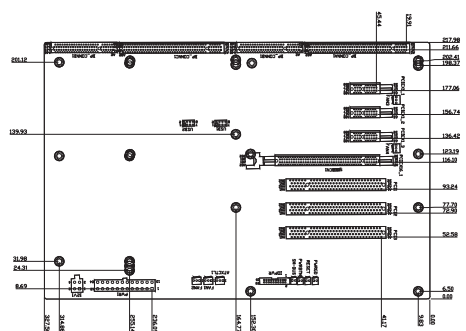
PE-7S-R40	7-slot backplane with one PCIe x16 slot, two PCIe x1 slots and three PCI slots
PAC-1700G	7-slot full-size compact chassis

PE-7S2-R40

Mounting holes
compatible with PCI-7S

Ordering Information

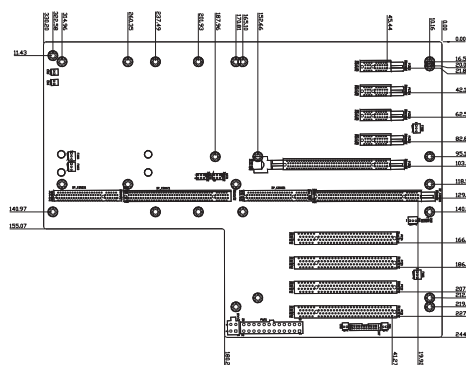
PE-7S2-R40	7-slot backplane with one PCIe x16 slot, four PCIe x1 slots and one PCI slot
PAC-1700G	7-slot full-size compact chassis



PE-8S-R40	8-slot backplane with one PCIe x16 slot, three PCIe x1 slots and three PCI slots
PAC-125G	10-slot full-size compact chassis

PE-10S-R40

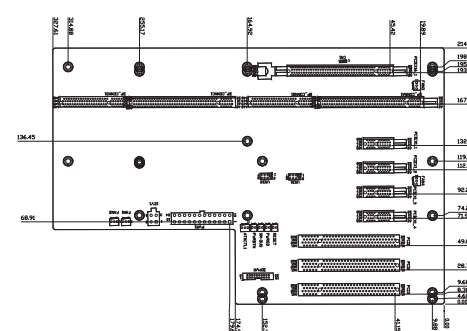
**Mounting holes
compatible with PCI-14S**



PE-10S-R40	10-slot backplane with one PCIe x16 slot, four PCIe x1 slots and four PCI slots
RACK-305G	4U 14-slot full-size rack-mount chassis
RACK-360G	4U 14-slot full-size rack-mount chassis
RACK-3000G	4U 14-slot full-size rack-mount chassis

PE-9S-R40

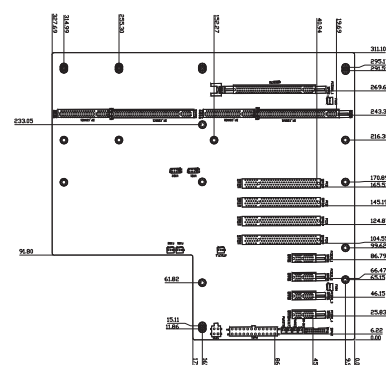
Mounting holes
compatible with PCI-10S2



PE-9S-R40	9-slot backplane with one PCIe x16 slot, four PCIe x1 slots and three PCI slots
-----------	---

PE-10S2-R40

**Mounting holes
compatible with PCI-14S**

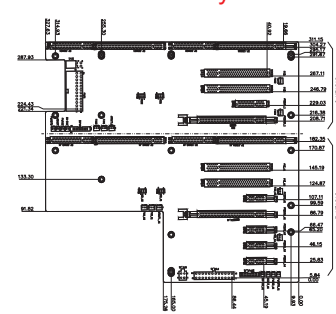
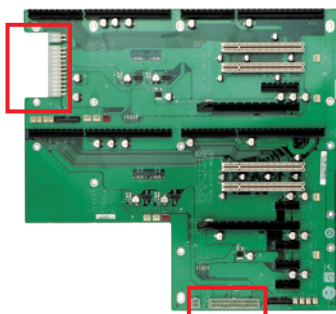


PE-10S2-R40	10-slot backplane with one PCIe x16 slot, four PCIe x1 slots and four PCI slots
RACK-3000G	4U 14-slot full-size rack-mount chassis
RACK-305G	4U 14-slot full-size rack-mount chassis
RACK-360G	4U 14-slot full-size rack-mount chassis

PE-13SD-R40

Mounting holes
compatible with PCI-14S

Dual system

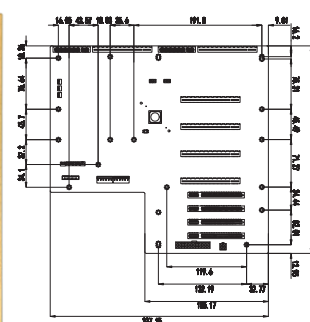
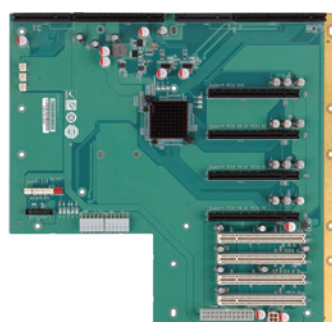


2 independent power resources

Ordering Information

PE-13SD-R40	13-slot backplane with two PCIe x16 slots, one PCIe x4 slot, four PCIe x1 slot and four PCI slots
RACK-3000G	4U 14-slot full-size rack-mount chassis
RACK-305G	4U 14-slot full-size rack-mount chassis
RACK-360G	4U 14-slot full-size rack-mount chassis

PXE-9S2-R10

Mounting holes
compatible with PCI-14S

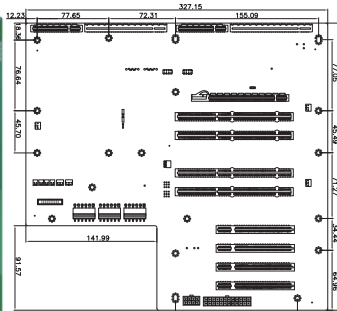
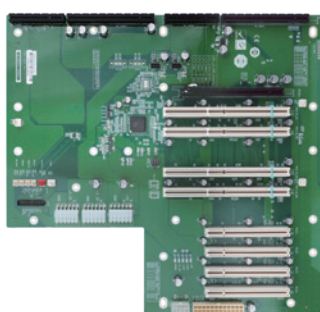
Ordering Information

PXE-9S2-R10	9-slot PICMG 1.3 backplane with one PCIe x16 by x16 slot, three PCIe x4 by x16 slots, and four PCI slots RoHS
RACK-305G	4U 14-slot full-size rack-mount chassis
RACK-360G	4U 14-slot full-size rack-mount chassis
RACK-3000G	4U 14-slot full-size rack-mount chassis

PXE-12S-R11

Mounting holes
compatible with PCI-14S

(PCIe to PCI-X Bridge)



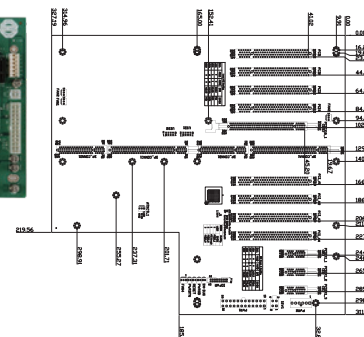
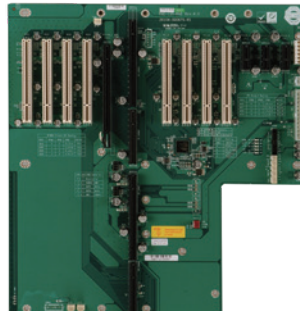
Ordering Information

PXE-12S-R11	12-slot backplane with one PCIe x16 slot, four PCI-X slots and four PCI slots
RACK-3000G	4U 14-slot full-size rack-mount chassis
RACK-305G	4U 14-slot full-size rack-mount chassis
RACK-360G	4U 14-slot full-size rack-mount chassis

PXE-13S-R51

Mounting holes
compatible with PCI-14S

(PCIe to PCI Bridge)



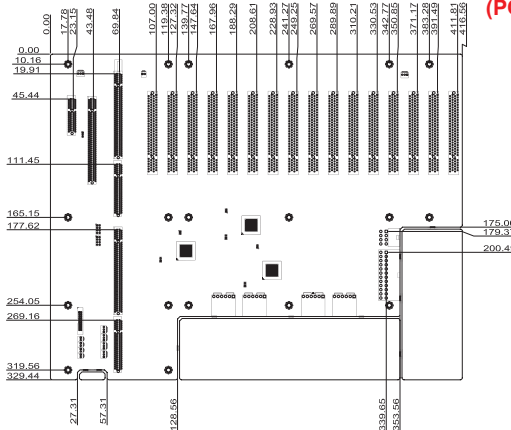
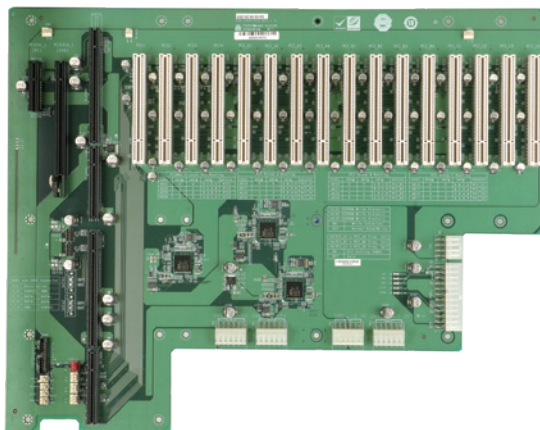
Ordering Information

PXE-13S-R51	13-slot backplane with one PCIe x16 slot, three PCIe x1 slots and eight PCI slots
RACK-3000G	4U 14-slot full-size rack-mount chassis
RACK-305G	4U 14-slot full-size rack-mount chassis
RACK-360G	4U 14-slot full-size rack-mount chassis

PXE-19S2-R10

Mounting holes
compatible with PCI-19S

(PCIe to PCI Bridge)



Ordering Information

PXE-19S2-R10	19-slot backplane with one PCIe x16 slot, one PCIe x1 slot and sixteen PCI slots
--------------	--

Mouser Electronics

Authorized Distributor

Click to View Pricing, Inventory, Delivery & Lifecycle Information:

[IEI:](#)

[PXE-9S2-R10](#) [PXE-19S2-R10](#) [PXE-13S-R50](#) [PXE-19S-R40](#) [PXE-12S-R11](#) [PXE-13S-R51](#)