



Intelligent DC UPS Module

12V/9~36V DC Input, 12V DC Output Uninterruptible Power Supply Module with Diagnostics

- VESA 75 or VESA 100 mounting
- 9-36V input through terminal or power jack, or 12V through power jack only
- Battery status and charge monitoring utility. Remote network management capabilities



Features

- 60W (5A @ 12V) or 100W (8.3A @ 12V) output
- 28Wh or 56Wh, for more than 140 minutes operation time (depending on panel PC power requirements)
- Rugged metal enclosure for standard VESA 75/100 mounting
- Web-based, remote network management, no software installation required
- Local PC-based monitoring software for input detection and battery status monitoring
- Auto shut down when battery low
- Remote DC output on/off switch for external switch installation
- Provides stable power to the PC during line sags and spikes and absorbs power surges and transients, protecting expensive equipment

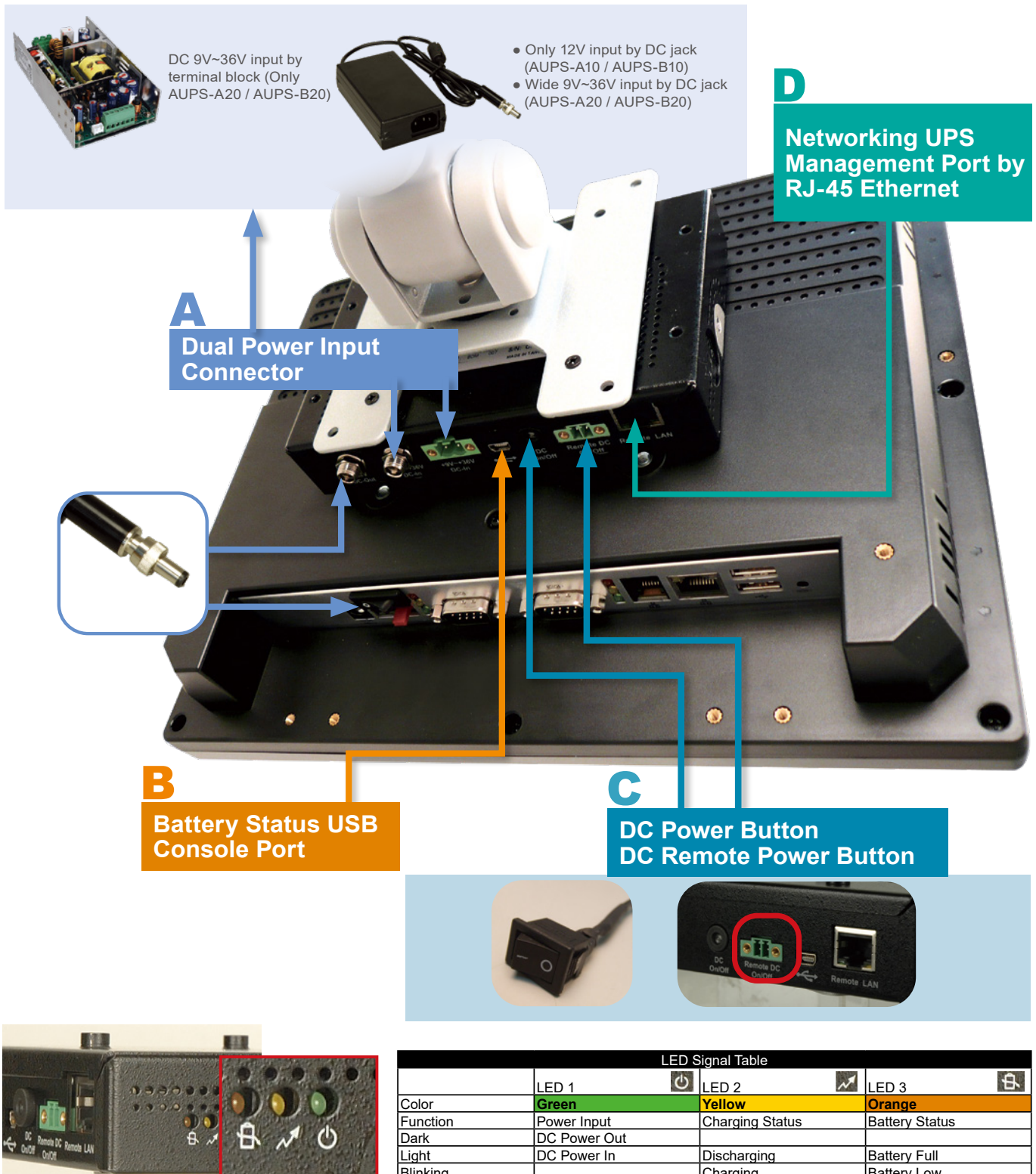


Model Name	AUPS-A10 / AUPS-A20	AUPS-B10 / AUPS-B20
Input Power	AUPS-A10 (12V)	AUPS-B10 (12V)
	AUPS-A20 (9~36V)	AUPS-B20 (9~36V)
Dimensions (mm)	150 x 95 x 34	170 x 150 x 34
Battery Capacity	28 Wh (Watt/Hour)	56 Wh (Watt/Hour)
Output Power	60W (5A@12V)	100W (8.3A@12V)
VESA Support (mm)	75 x 75	75 x 75 / 100 x 100

Intelligent UPS Module

High Energy Density / Lightweight / Compact DC to DC UPS & Power Module

Protect your panel PC from electrical damage and greatly reduce the risk of losing data. The UPS module serves as temporary power during a short break in power and allows a safe system shutdown for longer periods of power loss.



AUPS Network Administration Tool

Intelligent Software Utility

The remote management software utility and application program allow users to easily get the status of the AUPS and to control the AUPS power functions from anywhere with internet connection.



Network Remote Management Software Battery Capacity Status

UPS Status Monitoring

Stack Version: v1.3
Build Date: May 10 2018 00:08:00

- STATUS** - display UPS status and change UPS ON/OFF
- Send E-mail** - Send UPS status with E-MAIL
- Configuration** - setup IP Address and enable DHCP...

Power On/OFF

(click to toggle)
UPS ON/OFF:
☒ ON
☐ OFF
OS Shut Down:
☐ Yes
☒ No

AUPS

Stack Version: v1.3
Build Date: May 10 2018 00:08:00

- STATUS** - display UPS status and change UPS ON/OFF
- Send E-mail** - Send UPS status with E-MAIL

"Battery 1":
STATUS: Charging
Capacity(%): 87
VOLTAGE(mV): 12175
Current(mA): 2454
Temperature(C): 35
RemainTime(min): Not Used

UPS ON/OFF:
☒ ON
☐ OFF
OS Shut Down:
☐ Yes
☒ No

"Battery 1":
STATUS: Charging
Capacity(%): 87
VOLTAGE(mV): 12175
Current(mA): 2454
Temperature(C): 35
RemainTime(min): Not Used

Remote control DC output ON/OFF via web interface.

AUPS Local USB Utility Tool

Monitor the Most Critical Battery Functions on the Local Machine

The battery monitoring utility provides AUPS status monitoring and configuration ability. Uninterruptible Power Systems is a significant product that serves as emergency power when you suffer from electric event.



MONITORING SYSTEM STATUS

Shows system status real-time monitoring

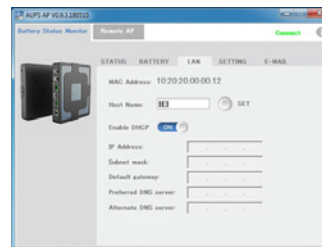
- DC Power indicator
- Battery capacity
- Battery status
- Temperature



BATTERY STATUS

Shows battery status real-time monitoring

- Real-time information update
- Status bar



LAN CONFIGURATION

LAN shows system IP Address information



E-MAIL

The E-mail page is where to set the SMTP settings for sending alert notification via e-mail



SETTING

Setting system management

Buzzer	Enable or disable the buzzer that warns when the system is switching to use battery power.
Enable LAN	Enable or disable the LAN for remote monitoring function.
Power	Click the button to power off the AUPS power module immediately.
Auto DC on	Enable to automatically power on the AUPS once DC power is applied.
Shut down condition (capacity %)	Set the battery capacity parameter for the system to shut down automatically.
DC off delay time (0~65536 sec)	Set the delay time for the AUPS series to power off after the system shut down.
System will be down-converted (capacity %)	Set the battery capacity parameter for the system to automatically switch to the Balanced power plan set in its Windows OS.
System go to sleep mode (capacity %)	Set the battery capacity parameter for the system to go into sleep mode automatically.

AUPS Module Specifications

Model Name		AUPS-A10	AUPS-A20	AUPS-B10	AUPS-B20
VESA Type		VESA 75	VESA 75	VESA 75 and 100	VESA 75 and 100
Input Data	Input voltage Uinated/range	DC +12V	DC +9V~+36V	DC +12V	DC +9V~+36V
	Input current rated	1. Adapter is 12V-6A (Load is 60W) 2. Battery is 6V-12A (Load is 60W)		1. Adapter is 12V-9A (Load is 100W) 2. Battery is 12V-9A (Load is 100W)	
	Standby power consumption	0.3A (0.2A if Network Management disabled)			
	Operation with charging current	500mA			
	Operation with charging power consumption	6W		10W	
	Charging time with system ON/OFF	8hrs / 2hrs (Battery empty)			
Output Data	Output voltage for normal operation	DC +12V +/-5%			
	Output voltage for battery operation (approx).	6~8.4V DC6 V (exhaustive discharge protection)		12~16.8V DC12 V (exhaustive discharge protection)	
	Output current	0A~5A		0A~8.3A	
	Efficiency (nominal operation) / power loss at Vin=12V, Iout=80% of full loading	89%	93%	95%	94%
Protection	Short-circuit protection	Yes			
	Exhaustive discharge protection	1. Battery low is 10% of battery capacity 2. Shutdown 5% of battery capacity (Default) 3. The end of battery discharge voltage is 6V			
	EMC / Safety certification	CE, FCC			
Monitoring	Ethernet interface	Web-based, specification 10/100Mbps with RJ-45 connection, Cat. 5 cable			
	USB interface	PC-capable, specification 2.0 with full speed, i.e. 2 Mbit/s. Standard 4-core shielded cable, USB Series "mini B" connector to DC-UPS			
Physical	Dimensions (LxWxH)	152mm x 96mm x 28mm		174mm x 147mm x 35mm	
	Weight	1.2 kg		1.8 kg	
LED Indicator	Green	DC power input			
	Yellow	Battery charging			
	Orange	Bettery discharging			
Environment	Operating Tem.	0°C~40°C			
	Storage Tem.	-20°C~50°C			

Note1: Connecting DC input constantly is recommended. Battery will be drained after 14 hours.

Note2: System power consumption + AUPS charging power consumption = Total watts of power source

Battery Module Specifications

Model Name	AUPS-A10	AUPS-A20	AUPS-B10	AUPS-B20
Battery Model Name	31603-000072-RS		31603-000073-RS	
Battery type	Li-Ion 2S2P 7.26V		Li-Ion 4S2P 14.52V	
Battery capacity	7.26V 5200 mAH		14.52V, 5200 mAH	
Maximum charge voltage	8.4V		16.8V	
The end of discharging voltage	5.5V		11V	
Recommended charging current (max.)	2.55A		2.55A	
System continuous discharging current (max.)	7.5A		7.5A	
The end of charge condition	255mA / 1Min		255mA / 1Min	
Discharge protection	Over current protection			
Charge protection	Over current protection			
Ambient temperature	0°C~45°C			
Storage temperatur	-20°C~65°C			
Self-discharge rate	340uA~440uA			
Dimensions (LxWxH)	139mm x 47mm x 26mm		165mm x 76mm x 26mm	
Weight	244g		466g	
Cycle life	300 charge / discharge cycles			
Backup 60W / 10Min 100W / 10Min	50W / 10Min		100W / 10Min	
Safety class	CE, FCC, UN38.3, UL			

Note: Replacing battery module every 2 years is recommended.



31603-000072-RS 31603-000073-RS

Selection Table for UPS Modules and Main Buffering Time

AFOLUX PPC	AUPS-A10	AUPS-A20	AUPS-B10	AUPS-B20
Under 50W solution				
AFL3-W07A-BT (20W)	110min	110min	220min	220min
AFL3-08A-BT (30W)	75min	75min	150min	150min
AFL3-W10A-BT (33W)	70min	70min	140min	140min
AFL3-12A-BT (42W)	55min	55min	110min	110min
AFL3-W15A-BT (50W)	45min	45min	90min	90min
AFL3-W19A-AL (40W)	55min	55min	110min	110min
50W ~ 100W solution				
AFL3-12C-ULT3 (58W)	-	-	75min	75min
AFL3-W15B-H81 (72W)	-	-	60min	60min
AFL3-W15C-ULT3 (68W)	-	-	65min	65min
AFL3-W19C-ULT3 (63W)	-	-	70min	70min
AFL3-W22C-ULT3 (65W)	-	-	70min	70min

Ordering Information

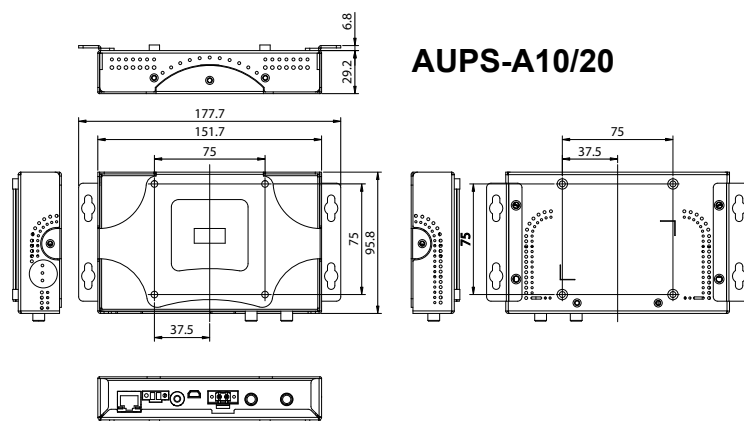
Part No.	Description
AUPS-A10-R20	VESA 75, DC 12V input 60W UPS module with 7.26V; 5200mAh, 2S2P Li-Ion battery, R20
AUPS-A20-R20	VESA 75, DC 9V ~ 36V input 60W UPS module with 7.26V; 5200mAh, 2S2P Li-Ion battery, R20
BATKIT-2S2P5200-R10	Battery installation kit with 2S2P 7.26V 5200mAh Smart Battery pack and accessories
31603-000072-RS	Battery Pack; Li Ion; WELL DONE/WTE; EXIC011K1002; SAMSUNG; ICR18650-26J; 5200mAh; 7.26V; 2S2P; 244±10g; BAT-LI-2S2P5200; CCL; RoHS
AUPS-B10-R20	VESA 100, DC 12V input 100W UPS module with 14.52V; 5200mAh, 4S2P Li-Ion battery, R20
AUPS-B20-R20	VESA 100, DC 9V ~ 36V input 100W UPS module with 14.52V; 5200mAh, 4S2P Li-Ion battery, R20
BATKIT-4S2P5200-R10	Battery installation kit with 4S2P 14.52V 5200mAh Smart Battery pack and accessories
31603-000073-RS	Battery Pack; Li Ion; WELL DONE/WTE; EXIC021K1002; SAMSUNG; ICR18650-26J; 5200mAh; 14.52V; 4S2P; 466±10g; BAT-LI-4S2P5200; CCL; RoHS

Note: The backup time could be varied on different models or operating temperature.

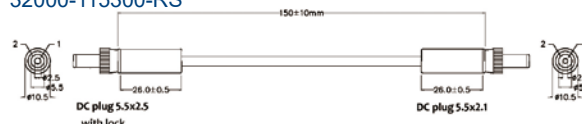
Two black cables are shown against a white background. The cable on the left has a small, cylindrical connector on the left and a larger, silver-colored connector on the right. The cable on the right has a small, cylindrical connector on the left and a standard USB-A connector on the right.



AUPS Mechanical Drawing (Unit: mm)



AUPS-A10/20



D-124600-RS

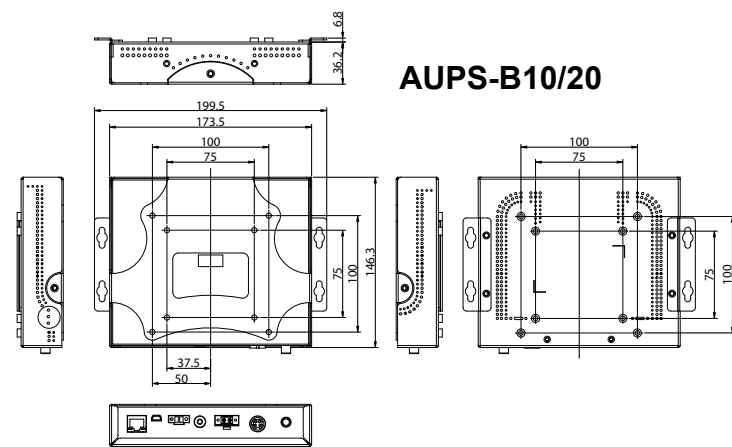
1200±10 mm

5mm

Return Switch

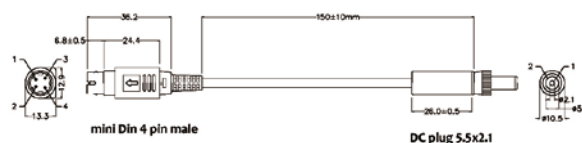
226W

Diagram illustrating the DC plug assembly. The assembly consists of a DC plug (5.5x2.5) without lock, connected to a DC plug (5.5x2.1). The cable length is 150 ± 10 mm. The DC plug (5.5x2.5) without lock has dimensions: 26.0 ± 0.5 mm for the main body and 2.0 ± 0.5 mm for the locking mechanism. The DC plug (5.5x2.1) has dimensions: 26.0 ± 0.5 mm for the main body and 2.0 ± 0.5 mm for the locking mechanism. The cable has a diameter of 10.5 mm.



AUPS-B10/20

32002-002201-100-RS



Mouser Electronics

Authorized Distributor

Click to View Pricing, Inventory, Delivery & Lifecycle Information:

IEI:

[32002-002201-100-RS](#)