

**POWER DISCRETES**
**Description**

Quick reference data

$V_{BR\ MIN} = 6.12 - 180V$

$V_{RWM} = 5.2 - 152V$

$V_C\ (max) = 11 - 273V$

$I_{(BR)}\ 1N6102 - 1N6137 = 5mA - 175mA$

**Features**

- ◆ Low dynamic impedance
- ◆ Hermetically sealed non-cavity construction
- ◆ 500 watt peak pulse power
- ◆ 1.5W continuous

These products are qualified to MIL-PRF-19500/516 and are preferred parts as listed in MIL-HDBK-5961. They can be supplied fully released as JANTX, JANTXV and JANS versions.

**Electrical Specifications**

Electrical specifications @  $T_A = 25^\circ C$  unless otherwise specified.

| Device Type | Minimum Breakdown Voltage<br>$V_{(BR)} @ I_{(BR)}$ | Test Current<br>$I_{(BR)}$ | Working Pk. Reverse Voltage<br>$V_{RWM}$ | Maximum Reverse Current<br>$I_{R1}$ | Maximum Clamping Voltage<br>$V_C @ I_P$ | Maximum Pk. Pulse Current<br>$I_P$<br>$T_P = 1mS$ | Temp. Coeff. of<br>$V_{(BR)}$<br>$\alpha_{(VZ)}$ | Maximum Reverse Current<br>$I_{R2} @ 150^\circ C$ |
|-------------|--|----------------------------|--|-------------------------------------|---|---|--|---|
|             | Volts  | mA                         | Volts                                    | $\mu A$                             | Volts                                   | Amps  | %/°C   | $\mu A$   |
| 1N6102      | 6.12   | 175                        | 5.2                                      | 100                                 | 11.0                                    | 45.4  | 0.05   | 4,000   |
| 1N6103      | 6.75   | 175                        | 5.7                                      | 50                                  | 11.8                                    | 42.4  | 0.06   | 750   |
| 1N6103A     | 7.13   | 175                        | 5.7                                      | 50                                  | 11.2                                    | 44.6  | 0.06   | 750   |
| 1N6104      | 7.38   | 150                        | 6.2                                      | 20                                  | 12.7                                    | 39.4  | 0.06   | 500   |
| 1N6104A     | 7.79   | 150                        | 6.2                                      | 20                                  | 12.1                                    | 41.3  | 0.06   | 500   |
| 1N6105      | 8.19   | 150                        | 6.9                                      | 20                                  | 14.0                                    | 35.7  | 0.06   | 300   |
| 1N6105A     | 8.65   | 150                        | 6.9                                      | 20                                  | 13.4                                    | 37.3  | 0.06   | 300   |
| 1N6106      | 9.0  | 125                        | 7.6                                      | 20                                  | 15.2                                    | 32.9  | 0.07   | 200   |
| 1N6106A     | 9.50   | 125                        | 7.6                                      | 20                                  | 14.5                                    | 34.5  | 0.07   | 200   |
| 1N6107      | 9.9  | 125                        | 8.4                                      | 20                                  | 16.3                                    | 30.7  | 0.07   | 200   |
| 1N6107A     | 10.45  | 125                        | 8.4                                      | 20                                  | 15.6                                    | 32.0  | 0.07   | 200   |
| 1N6108      | 10.8   | 100                        | 9.1                                      | 20                                  | 17.7                                    | 28.2  | 0.07   | 150   |
| 1N6108A     | 11.4   | 100                        | 9.1                                      | 20                                  | 16.9                                    | 29.6  | 0.07   | 150   |
| 1N6109      | 11.7   | 100                        | 9.9                                      | 20                                  | 19.0                                    | 26.3  | 0.08   | 150   |
| 1N6109A     | 12.35  | 100                        | 9.9                                      | 20                                  | 18.2                                    | 27.5  | 0.08   | 150   |
| 1N6110      | 13.5   | 75                         | 11.4                                     | 20                                  | 21.9                                    | 22.8  | 0.08   | 100   |
| 1N6110A     | 14.25  | 75                         | 11.4                                     | 20                                  | 21.0                                    | 23.8  | 0.08   | 100   |
| 1N6111      | 14.4   | 75                         | 12.2                                     | 20                                  | 23.4                                    | 21.4  | 0.08   | 100   |
| 1N6111A     | 15.2   | 75                         | 12.2                                     | 20                                  | 22.3                                    | 22.4  | 0.08   | 100   |

## POWER DISCRETES

### Electrical Specifications

Electrical specifications @  $T_A = 25^\circ\text{C}$  unless otherwise specified.

| Device Type | Minimum Breakdown Voltage<br>$V_{(BR)} @ I_{(BR)}$ | Test Current<br>$I_{(BR)}$ | Working Pk. Reverse Voltage<br>$V_{RWM}$ | Maximum Reverse Current<br>$I_{R1}$ | Maximum Clamping Voltage<br>$V_C @ I_P$ | Maximum Pk. Pulse Current<br>$I_P$<br>$T_P = 1\text{mS}$ | Temp. Coeff. of<br>$V_{(BR)}$<br>$\alpha_{(VZ)}$ | Maximum Reverse Current<br>$I_{R2} @ 150^\circ\text{C}$ |
|-------------|--|----------------------------|--|-------------------------------------|---|--|--|---|
|             | Volts  | mA                         | Volts                                    | $\mu\text{A}$                       | Volts                                   | Amps   | %/°C   | $\mu\text{A}$   |
| 1N6112      | 16.2   | 65                         | 13.7                                     | 1                                   | 26.3                                    | 19.0   | 0.085  | 100   |
| 1N6112A     | 17.1   | 65                         | 13.7                                     | 1                                   | 25.1                                    | 19.9   | 0.085  | 100   |
| 1N6113      | 18.0   | 65                         | 15.2                                     | 1                                   | 29.0                                    | 17.2   | 0.085  | 100   |
| 1N6113A     | 19.0   | 65                         | 15.2                                     | 1                                   | 27.7                                    | 18.0   | 0.085  | 100   |
| 1N6114      | 19.8   | 50                         | 16.7                                     | 1                                   | 31.9                                    | 15.7   | 0.085  | 100   |
| 1N6114A     | 20.9   | 50                         | 16.7                                     | 1                                   | 30.5                                    | 16.4   | 0.085  | 100   |
| 1N6115      | 21.6   | 50                         | 18.2                                     | 1                                   | 34.8                                    | 14.4   | 0.09   | 100   |
| 1N6115A     | 22.8   | 50                         | 18.2                                     | 1                                   | 33.3                                    | 15.0   | 0.09   | 100   |
| 1N6116      | 24.3   | 50                         | 20.6                                     | 1                                   | 39.2                                    | 12.8   | 0.09   | 100   |
| 1N6116A     | 25.7   | 50                         | 20.6                                     | 1                                   | 37.4                                    | 13.4   | 0.09   | 100   |
| 1N6117      | 27.0   | 40                         | 22.8                                     | 1                                   | 43.6                                    | 11.5   | 0.09   | 100   |
| 1N6117A     | 28.5   | 40                         | 22.8                                     | 1                                   | 41.6                                    | 12.0   | 0.09   | 100   |
| 1N6118      | 29.7   | 40                         | 25.1                                     | 1                                   | 47.9                                    | 10.4   | 0.095  | 100   |
| 1N6118A     | 31.4   | 40                         | 25.1                                     | 1                                   | 45.7                                    | 10.9   | 0.095  | 100   |
| 1N6119      | 32.4   | 30                         | 27.4                                     | 1                                   | 52.3                                    | 9.6  | 0.095  | 100   |
| 1N6119A     | 34.2   | 30                         | 27.4                                     | 1                                   | 49.9                                    | 10.0   | 0.095  | 100   |
| 1N6120      | 35.1   | 30                         | 29.7                                     | 1                                   | 56.2                                    | 8.9  | 0.095  | 100   |
| 1N6120A     | 37.1   | 30                         | 29.7                                     | 1                                   | 53.6                                    | 9.3  | 0.095  | 100   |
| 1N6121      | 38.7   | 30                         | 32.7                                     | 1                                   | 62.0                                    | 8.1  | 0.095  | 100   |
| 1N6121A     | 40.9   | 30                         | 32.7                                     | 1                                   | 59.1                                    | 8.5  | 0.095  | 100   |
| 1N6122      | 42.3   | 25                         | 35.8                                     | 1                                   | 67.7                                    | 7.4  | 0.095  | 100   |
| 1N6122A     | 44.7   | 25                         | 35.8                                     | 1                                   | 64.6                                    | 7.7  | 0.095  | 100   |
| 1N6123      | 45.9   | 25                         | 38.8                                     | 1                                   | 73.5                                    | 6.8  | 0.095  | 100   |
| 1N6123A     | 48.5   | 25                         | 38.8                                     | 1                                   | 70.1                                    | 7.1  | 0.095  | 100   |
| 1N6124      | 50.4   | 20                         | 42.6                                     | 1                                   | 80.7                                    | 6.2  | 0.095  | 100   |
| 1N6124A     | 53.2   | 20                         | 42.6                                     | 1                                   | 77.0                                    | 6.5  | 0.095  | 100   |

## POWER DISCRETES

### Electrical Specifications

Electrical specifications @  $T_A = 25^\circ\text{C}$  unless otherwise specified.

| Device Type | Minimum Breakdown Voltage<br>$V_{(BR)} @ I_{(BR)}$ | Test Current<br>$I_{(BR)}$ | Working Pk. Reverse Voltage<br>$V_{RWM}$ | Maximum Reverse Current<br>$I_{R1}$ | Maximum Clamping Voltage<br>$V_C @ I_P$ | Maximum Pk. Pulse Current<br>$I_P @ T_P = 1\text{mS}$ | Temp. Coeff. of<br>$V_{(BR)}$<br>$\alpha_{(VZ)}$ | Maximum Reverse Current<br>$I_{R2} @ 150^\circ\text{C}$ |
|-------------|--|----------------------------|--|-------------------------------------|---|---|--|---|
|             | Volts  | mA                         | Volts                                    | $\mu\text{A}$                       | Volts                                   | Amps  | $\%/^\circ\text{C}$                              | $\mu\text{A}$   |
| 1N6125      | 55.8   | 20                         | 47.1                                     | 1                                   | 89.3                                    | 5.6   | 0.1  | 100   |
| 1N6125A     | 58.9   | 20                         | 47.1                                     | 1                                   | 85.3                                    | 5.9   | 0.1  | 100   |
| 1N6126      | 61.2   | 20                         | 51.7                                     | 1                                   | 98.0                                    | 5.1   | 0.1  | 100   |
| 1N6126A     | 64.6   | 20                         | 51.7                                     | 1                                   | 97.1                                    | 5.1   | 0.1  | 100   |
| 1N6127      | 67.5   | 20                         | 56.0                                     | 1                                   | 108.1                                   | 4.6   | 0.1  | 100   |
| 1N6127A     | 71.3   | 20                         | 56.0                                     | 1                                   | 103.1                                   | 4.8   | 0.1  | 100   |
| 1N6128      | 73.8   | 15                         | 62.2                                     | 1                                   | 118.2                                   | 4.2   | 0.1  | 100   |
| 1N6128A     | 77.9   | 15                         | 62.2                                     | 1                                   | 112.8                                   | 4.4   | 0.1  | 100   |
| 1N6129      | 81.9   | 15                         | 69.2                                     | 1                                   | 131.1                                   | 3.8   | 0.1  | 100   |
| 1N6129A     | 86.5   | 15                         | 69.2                                     | 1                                   | 125.1                                   | 4.0   | 0.1  | 100   |
| 1N6130      | 90.0   | 12                         | 76.0                                     | 1                                   | 144.1                                   | 3.5   | 0.1  | 100   |
| 1N6130A     | 95.0   | 12                         | 76.0                                     | 1                                   | 137.6                                   | 3.6   | 0.1  | 100   |
| 1N6131      | 99.0   | 12                         | 83.6                                     | 1                                   | 158.5                                   | 3.2   | 0.1  | 100   |
| 1N6131A     | 104.5  | 12                         | 83.6                                     | 1                                   | 151.3                                   | 3.3   | 0.1  | 100   |
| 1N6132      | 108.0  | 10                         | 91.2                                     | 1                                   | 172.9                                   | 2.9   | 0.1  | 100   |
| 1N6132A     | 114.0  | 10                         | 91.2                                     | 1                                   | 165.1                                   | 3.0   | 0.1  | 100   |
| 1N6133      | 117.0  | 10                         | 98.8                                     | 1                                   | 187.3                                   | 2.7   | 0.105  | 100   |
| 1N6133A     | 123.5  | 10                         | 98.8                                     | 1                                   | 178.8                                   | 2.8   | 0.105  | 100   |
| 1N6134      | 135.0  | 8                          | 114.0                                    | 1                                   | 216.2                                   | 2.3   | 0.105  | 100   |
| 1N6134A     | 142.5  | 8                          | 114.0                                    | 1                                   | 206.3                                   | 2.4   | 0.105  | 100   |
| 1N6135      | 144  | 8                          | 121.6                                    | 1                                   | 228.8                                   | 2.2   | 0.105  | 100   |
| 1N6135A     | 152  | 8                          | 121.6                                    | 1                                   | 218.4                                   | 2.3   | 0.105  | 100   |
| 1N6136      | 162  | 5                          | 136.8                                    | 1                                   | 257.4                                   | 1.9   | 0.11   | 100   |
| 1N6136A     | 171  | 5                          | 136.8                                    | 1                                   | 245.7                                   | 2.0   | 0.11   | 100   |
| 1N6137      | 180  | 5                          | 152.0                                    | 1                                   | 286.0                                   | 1.7   | 0.11   | 100   |
| 1N6137A     | 190  | 5                          | 152.0                                    | 1                                   | 273.0                                   | 1.8   | 0.11   | 100   |

**POWER DISCRETES**

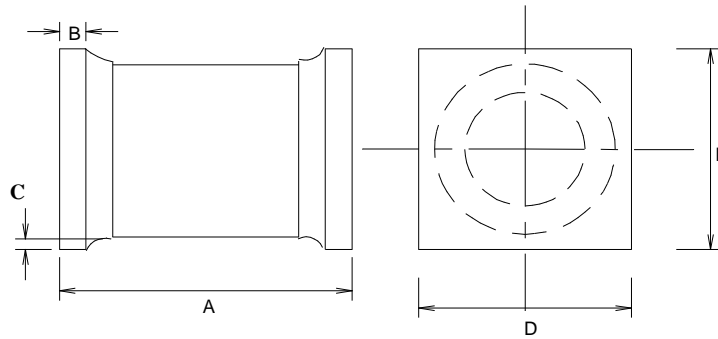
**Ordering Information**

| Part Number  | Description                      |
|--|----------------------------------|
| 1N6102US thru 1N6137US<br>1N6103AUS thru 1N6137AUS | Surface Mount(US) <sup>(1)</sup> |

Note:

(1) Available in trays or tape and reel packaging. Please consult factory for quantities.

**Outline Drawing**



|   | Dimensions                                   |       |
|---|--|-------|
|   | 1N6102US - 1N6137US<br>1N6103AUS - 1N6137AUS |       |
|   | Inches                                       |       |
|   | MIN  | MAX   |
| A | 0.2  | 0.225 |
| B | 0.019  | 0.028 |
| C | 0.003  | -     |
| D | 0.137  | 0.148 |

**Contact Information**

Semtech Corporation  
Power Discretes Products Division  
200 Flynn Road, Camarillo, CA 93012  
Phone: (805)498-2111 FAX (805)498-3804

# Mouser Electronics

Authorized Distributor

Click to View Pricing, Inventory, Delivery & Lifecycle Information:

## Semtech:

[JAN1N6113US](#) [JAN1N6113AUS](#) [JAN1N6105AUS](#) [JAN1N6123AUS](#) [JAN1N6124AUS](#) [JAN1N6129US](#)  
[JAN1N6133US](#) [JAN1N6134US](#) [JAN1N6128US](#) [JAN1N6124US](#) [JAN1N6127AUS](#) [JAN1N6119US](#) [JAN1N6108US](#)  
[JAN1N6125AUS](#) [JAN1N6132AUS](#) [JAN1N6126US](#) [JAN1N6109US](#) [JAN1N6134AUS](#) [JAN1N6123US](#)  
[JAN1N6109AUS](#) [JAN1N6110AUS](#) [JAN1N6105US](#) [JAN1N6108AUS](#) [JAN1N6130US](#) [JAN1N6106AUS](#)  
[JAN1N6129AUS](#) [JAN1N6137US](#) [JAN1N6104US](#) [JAN1N6103US](#) [JAN1N6111US](#) [JAN1N6121US](#) [JAN1N6131AUS](#)  
[JAN1N6107AUS](#) [JAN1N6118AUS](#) [JAN1N6133AUS](#) [JAN1N6116AUS](#) [JAN1N6132US](#) [JAN1N6126AUS](#)  
[JAN1N6136US](#) [JAN1N6106US](#) [JAN1N6115US](#) [JAN1N6131US](#) [JAN1N6137AUS](#) [JAN1N6110US](#) [JAN1N6135US](#)  
[JAN1N6127US](#) [JAN1N6107US](#) [JAN1N6102US](#) [JAN1N6125US](#) [JAN1N6122AUS](#) [JAN1N6128AUS](#) [JAN1N6111AUS](#)  
[JAN1N6117US](#) [JAN1N6130AUS](#) [JAN1N6115AUS](#) [JAN1N6112US](#) [JAN1N6118US](#) [JAN1N6116US](#) [JAN1N6120US](#)  
[JAN1N6114US](#) [JAN1N6103AUS](#) [JAN1N6117AUS](#) [JAN1N6122US](#) [JAN1N6114AUS](#) [JAN1N6136AUS](#)  
[JAN1N6120AUS](#) [JAN1N6119AUS](#) [JAN1N6112AUS](#) [JAN1N6104AUS](#) [JAN1N6135AUS](#) [JAN1N6121AUS](#)