



EC3AW 2-3W Isolated DC-DC Converters

Application Note V10 May 2015

ISOLATED DC-DC Converter EC3AW SERIES APPLICATION NOTE



Approved By:

Department	Approved By	Checked By	Written By
Research and Development Department	Enoch	Danny	Joyce
Quality Assurance Department	Jack	Benny	



EC3AW 2-3W Isolated DC-DC Converters

Application Note V10 May 2015

Content

1. INTRODUCTION	3
2. DC-DC CONVERTER FEATURES	3
3. ELECTRICAL BLOCK DIAGRAM	3
4. TECHNICAL SPECIFICATIONS	4
5. MAIN FEATURES AND FUNCTIONS	7
5.1 Operating Temperature Range	7
5.2 Over Current Protection	7
6. APPLICATIONS	7
6.1 Recommended Layout PCB Footprints and Soldering Information	7
6.2 Power De-Rating Curves for EC3AW Series	8
6.3 Efficiency vs. Load Curves	9
6.5 Input Capacitance at the Power Module	12
6.6 Test Set-Up	12
6.7 Output Ripple and Noise Measurement	12
6.8 Output Capacitance	13
7. SAFETY & EMC	13
7.1 Input Fusing and Safety Considerations.	13
7.2 EMC Considerations	13
8. PART NUMBER	17
9. MECHANICAL SPECIFICATIONS	17



EC3AW 2-3W Isolated DC-DC Converters

Application Note V10 May 2015

1. Introduction

The EC3AW series offer 2-3 watts of output power in a 24 pin DIP and SMD copper package. The EC3AW series has a 4:1 wide input voltage range of 9-36VDC and 18-72VDC, and provides a precisely regulated output. This series has features such as high efficiency, 500VDC, 1500VDC, 3KVDC of isolation and allows an ambient operating temperature range of -25°C to 71°C (de-rating above 71°C). The modules are fully protected against output short circuit. All models are very suitable for distributed power architectures, telecommunications, battery operated equipment and industrial applications.

2. DC-DC Converter Features

- * 2-3W Isolated Output
- * DIP-24 / SMD Package
- * Efficiency Up to 77%
- * 4:1 Input Range
- * Regulated Outputs
- * PI Input Filter
- * Continuous Short Circuit Protection

3. Electrical Block Diagram

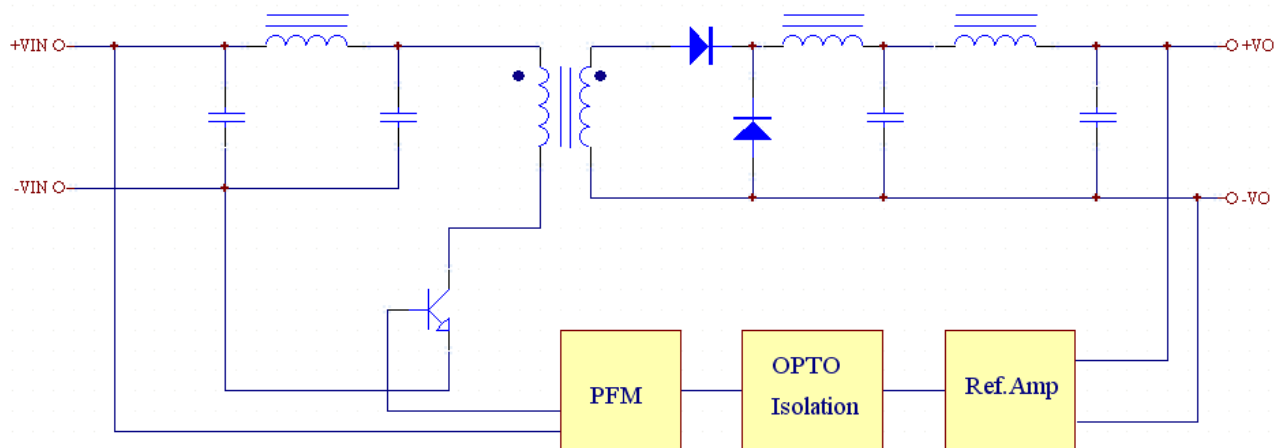


Figure 1 Electrical Block Diagram of single output module

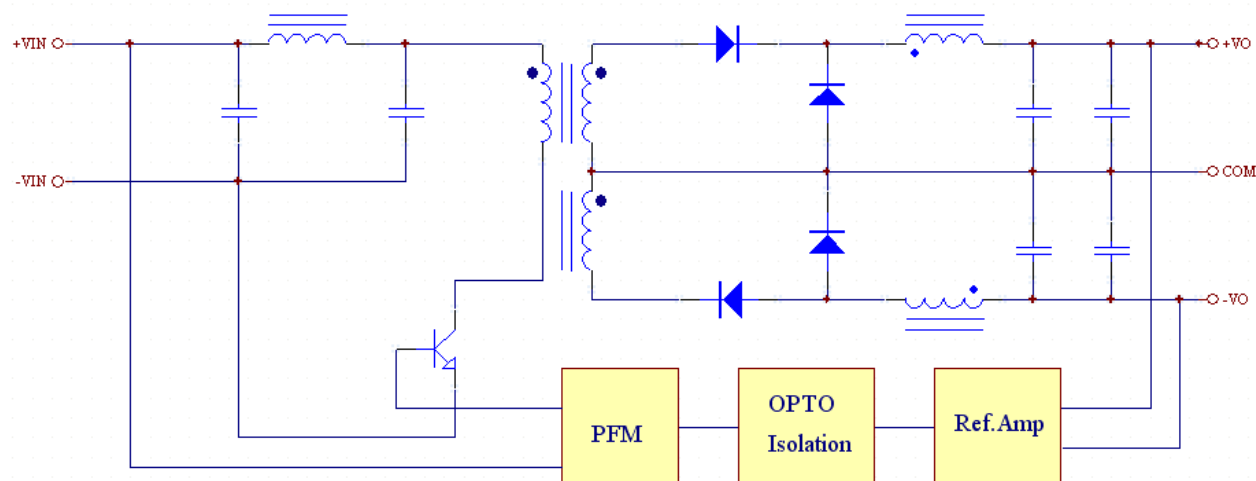


Figure 2 Electrical Block Diagram of dual output module



EC3AW 2-3W Isolated DC-DC Converters

Application Note V10 May 2015

4. Technical Specifications

(All specifications are typical at nominal input, full load at 25°C unless otherwise noted.)

ABSOLUTE MAXIMUM RATINGS

PARAMETER	NOTES and CONDITIONS	Device	Min.	Typical	Max.	Units
Input Voltage						
Continuous		24Vin	-0.3		36	Vdc
		48Vin	-0.3		72	
Transient	100ms	24Vin			50	Vdc
		48Vin			100	
Operating Ambient Temperature	With de-rating, above 71°C	All	-25		+71	°C
Case Temperature	Plastic Case	All			95	°C
	Copper Case				100	
Storage Temperature		All	-40		+100	°C
Input/Output Isolation Voltage	1 minute	EC3AWXX (M/MS)	500			Vdc
		EC3AWXX (H)	3K			
		EC3AWXX (HM/HMS)	1.5K			

INPUT CHARACTERISTICS

PARAMETER	NOTES and CONDITIONS	Device	Min.	Typical	Max.	Units
Operating Input Voltage		24Vin	9	24	36	Vdc
		48Vin	18	48	72	
Maximum Input Current	Full load, Vin= 9V	24Vin		470		mA
	Full load, Vin=18V	48Vin		240		
No-Load Input Current	Vin=24V	Vo=3.3Vdc		15		mA
		Vo=5Vdc		15		
		Vo=12Vdc		15		
		Vo=15Vdc		25		
		Vo=±5Vdc		25		
		Vo=±12Vdc		25		
		Vo=±15Vdc		15		
	Vin=48V	Vo=3.3Vdc		7.5		
		Vo=5Vdc		7.5		
		Vo=12Vdc		7.5		
		Vo=15Vdc		12		
		Vo=±5Vdc		12		
		Vo=±12Vdc		12		
		Vo=±15Vdc		7.5		



EC3AW 2-3W Isolated DC-DC Converters

Application Note V10 May 2015

OUTPUT CHARACTERISTIC

PARAMETER	NOTES and CONDITIONS	Device	Min.	Typical	Max.	Units
Output Voltage Set Point	V_{in} =nominal input, $I_o = I_{o_{max}}$.	$V_o=3.3V_{dc}$	3.234	3.3	3.366	Vdc
		$V_o=5V_{dc}$	4.9	5	5.1	
		$V_o=12V_{dc}$	11.76	12	12.24	
		$V_o=15V_{dc}$	14.7	15	15.3	
		$V_o=\pm 5V_{dc}$	± 4.9	± 5	± 5.1	
		$V_o=\pm 12V_{dc}$	± 11.76	± 12	± 12.24	
		$V_o=\pm 15V_{dc}$	± 14.7	± 15	± 15.3	
Output Voltage Balance	V_{in} =nominal input, $I_o=I_{o_{max}}$.	Dual			± 1.0	%
Output Voltage Regulation						
Load Regulation	I_o =full load to 10% load	Single			± 0.5	%
	I_o =full load to 25% load	Dual			± 1.0	
Line Regulation	V_{in} =low line to high line, full load	All			± 0.5	%
Temperature Coefficient	$T_a=-25^{\circ}C$ to $71^{\circ}C$	All			± 0.05	%/ $^{\circ}C$
Output Voltage Ripple and Noise (5Hz to 20MHz bandwidth)						
Peak-to-Peak	V_{in} =nominal input, I_o = full load (with 0.1uF MLCC for SMD package)	$V_o=3.3V_{dc}$			100	mV
		$V_o=5V_{dc}$			100	
		$V_o=12V_{dc}$			100	
		$V_o=15V_{dc}$			100	
		$V_o=\pm 5V_{dc}$			100	
		$V_o=\pm 12V_{dc}$			120	
		$V_o=\pm 15V_{dc}$			150	
Operating Output Current Range		$V_o=3.3V_{dc}$			600	mA
		$V_o=5V_{dc}$			600	
		$V_o=12V_{dc}$			250	
		$V_o=15V_{dc}$			200	
		$V_o=\pm 5V_{dc}$			± 300	
		$V_o=\pm 12V_{dc}$			± 125	
		$V_o=\pm 15V_{dc}$			± 100	
Output DC Current-Limit Inception	$V_o=90\% V_{o, nominal}$	All	120			%

DYNAMIC CHARACTERISTICS

PARAMETER	NOTES and CONDITIONS	Device	Min.	Typical	Max.	Units
Turn-On Delay and Rise Time						
Turn-On Delay Time, From Input	V_{in} , Nominal. to $90\%V_{o, set}$	$V_o=3.3\&5V$		0.5	1.2	ms
		Others		4	12	
Output Voltage Rise Time	10% V_o , set to $90\%V_{o, set}$	$V_o=3.3\&5V$		0.5	1.2	ms
		Others		4	12	



EC3AW 2-3W Isolated DC-DC Converters

Application Note V10 May 2015

EFFICIENCY

PARAMETER	NOTES and CONDITIONS	Device	Min.	Typical	Max.	Units
100% Load	Vin=24V	EC3AW01		72		%
		EC3AW02		76		
		EC3AW03		76		
		EC3AW04		70		
		EC3AW05		72		
		EC3AW06		72		
		EC3AW07		70		
	Vin=48V	EC3AW11		72		
		EC3AW12		77		
		EC3AW13		77		
		EC3AW14		71		
		EC3AW15		72		
		EC3AW16		72		
		EC3AW17		70		

ISOLATION CHARACTERISTICS

PARAMETER	NOTES and CONDITIONS	Device	Min.	Typical	Max.	Units
Isolation Voltage	Input to Output, 1 minutes	EC3AWXX (M/MS)	500			Vdc
		EC3AWXX (H)	3K			
		EC3AWXX (HM/HMS)	1.5K			
Isolation Resistance	Input to Output	All	1000			MΩ
Isolation Capacitance	Input to Output	EC3AWXX (H)		300		pF
		Others		600		

FEATURE CHARACTERISTICS

PARAMETER	NOTES and CONDITIONS	Device	Min.	Typical	Max.	Units
Switching Frequency		All	100			KHz

GENERAL SPECIFICATIONS

PARAMETER	NOTES and CONDITIONS	Device	Min.	Typical	Max.	Units
MTBF	Io=100% of Io.max; Ta=25°C per MIL-HDBK-217F	All		2800		K hours
Weight		All		12.5		grams



EC3AW 2-3W Isolated DC-DC Converters

Application Note V10 May 2015

5. Main Features and Functions

5.1 Operating Temperature Range

The EC3AW series converters can be operated by a wide ambient temperature range from -25°C to 71°C (de-rating above 71°C). The standard models case temperature should not be exceeded 100°C at normal operating (Detail see content 6.2).

5.2 Over Current Protection

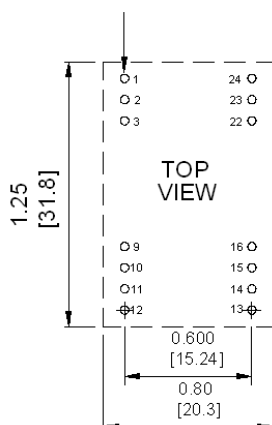
All models have internal over current and continuous short circuit protection. The unit operates normally once the fault condition is removed. At the point of current limit inception, the converter will go into over current protection.

6. Applications

6.1 Recommended Layout PCB Footprints and Soldering Information

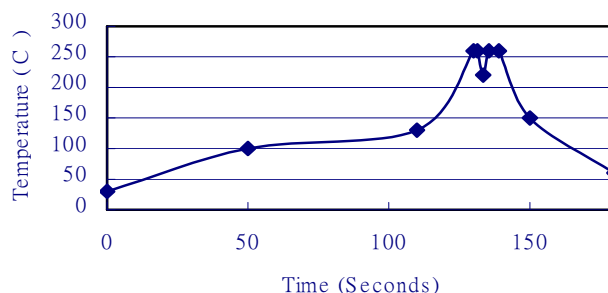
The system designer or the end user must ensure that other components and metal in the vicinity of the converter meet the spacing requirements to which the system is approved. Low resistance and low inductance PCB layout traces are the norm and should be used where possible. Due consideration must also be given to proper low impedance tracks between power module, input and output grounds. The recommended footprints and soldering profiles are shown below.

0.8mm PLATED THROUGH HOLE
1.6mm PAD SIZE



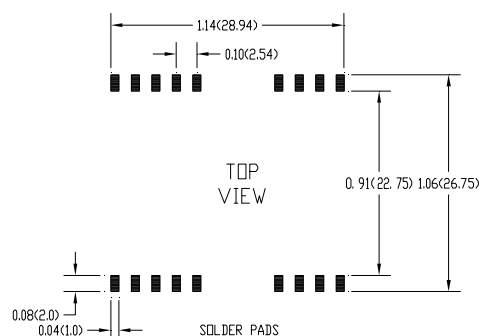
Note: Dimensions are in inches (millimeters)

Lead Free Wave Soldering Profile

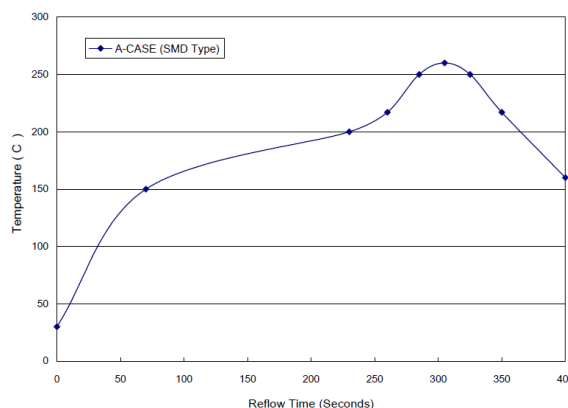


Note :

1. Soldering Materials: Sn/Cu/Ni
2. Ramp up rate during preheat: $1.4^{\circ}\text{C}/\text{Sec}$ (From 50°C to 100°C)
3. Soaking temperature: $0.5^{\circ}\text{C}/\text{Sec}$ (From 100°C to 130°C), 60 ± 20 seconds
4. Peak temperature: 260°C , above 250°C 3~6 Seconds
5. Ramp up rate during cooling: $-10.0^{\circ}\text{C}/\text{Sec}$ (From 260°C to 150°C)



Lead Free Hot Air Reflow Profile



Note :

1. Soldering Paste: SHENMAO PF610-P (Sn/Ag/Cu)
2. Ramp up rate during preheat: $1.71^{\circ}\text{C}/\text{Sec}$ (From 30°C to 150°C)
3. Soaking temperature: $0.31^{\circ}\text{C}/\text{Sec}$ (From 150°C to 200°C), 160 ± 10 seconds
4. Ramp up rate during reflow: $0.96^{\circ}\text{C}/\text{Sec}$ (From 217°C to 260°C)
5. Peak temperature: 260°C , above 217°C 90 Seconds
6. Ramp up rate during cooling: $-1.2^{\circ}\text{C}/\text{Sec}$ (From 260°C to 160°C)

Figure 3 Recommended PCB Layout Footprints and Wave Soldering Profiles for DIP-24 and SMD packages



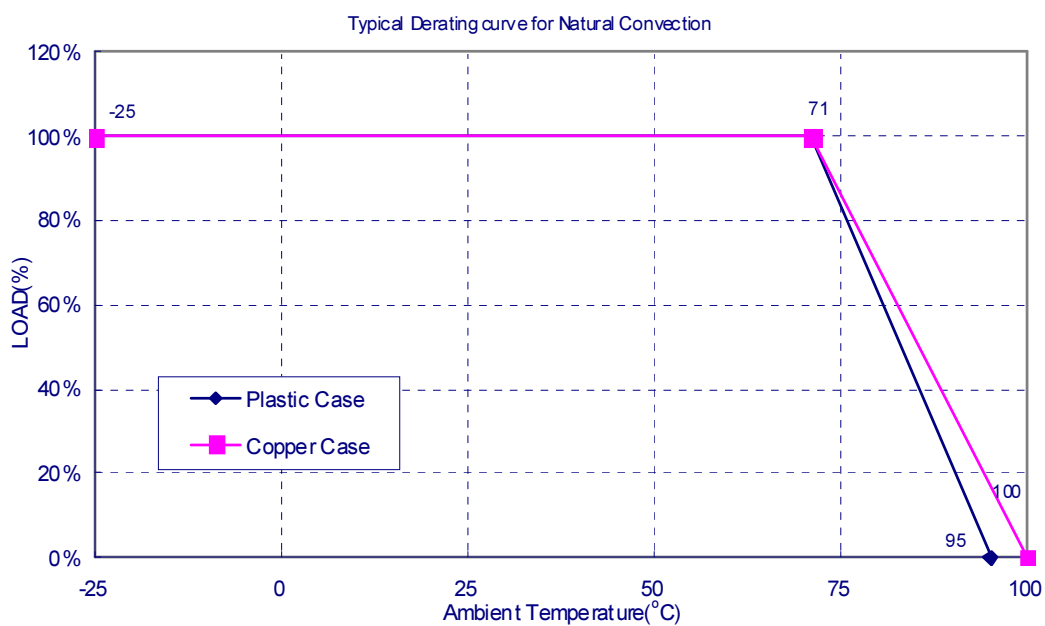
EC3AW 2-3W Isolated DC-DC Converters

Application Note V10 May 2015

6.2 Power De-Rating Curves for EC3AW Series

Operating Ambient temperature Range: -25°C ~ 71°C with de-rating above 71°C .

Maximum case temperature under any operating condition should not exceed 95°C (Plastic Case), 100°C (Copper Case).



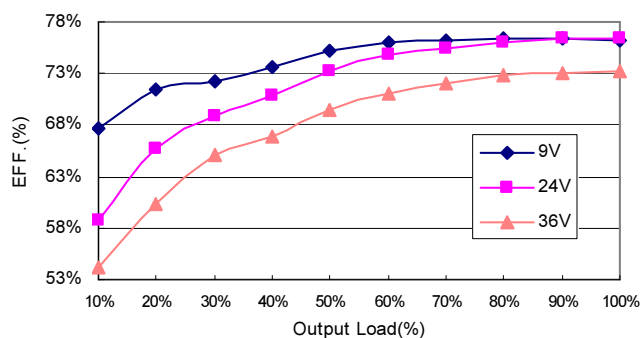


EC3AW 2-3W Isolated DC-DC Converters

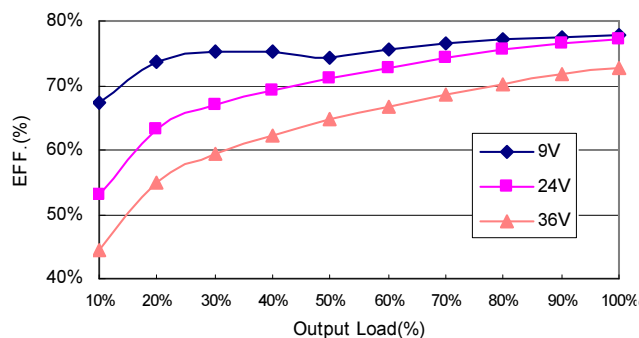
Application Note V10 May 2015

6.3 Efficiency vs. Load Curves

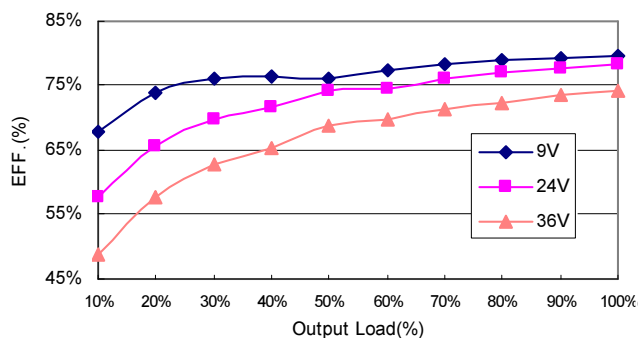
EC3AW01H Load VS EFF.



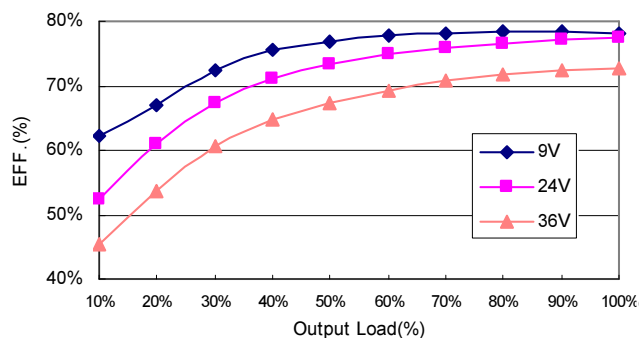
EC3AW02H Load VS EFF.



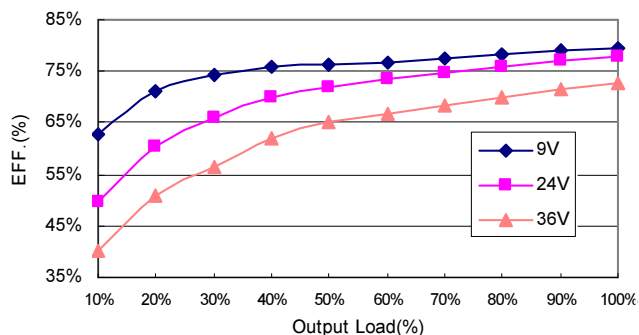
EC3AW03H Load VS EFF.



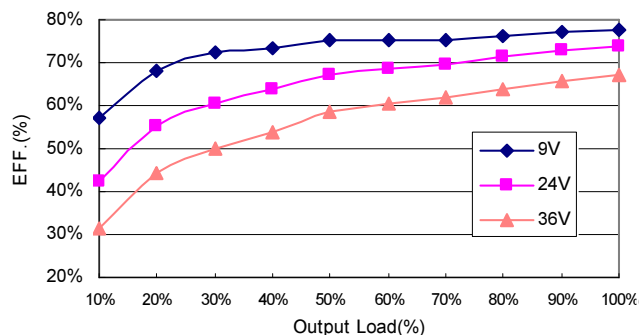
EC3AW04H Load VS EFF.



EC3AW05H Load VS EFF.



EC3AW06H Load VS EFF.

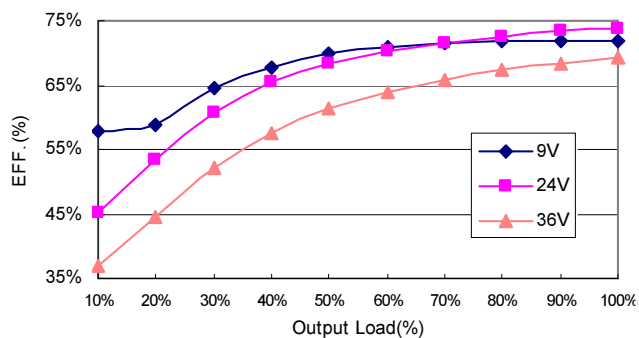




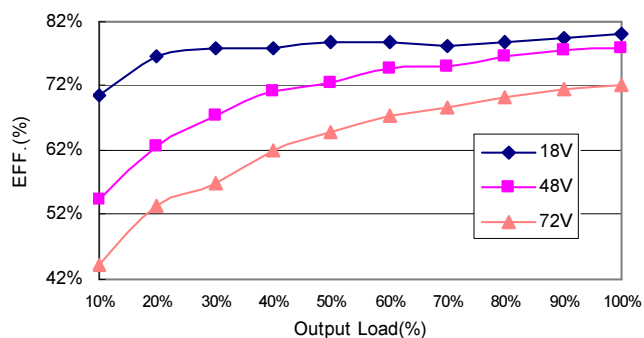
EC3AW 2-3W Isolated DC-DC Converters

Application Note V10 May 2015

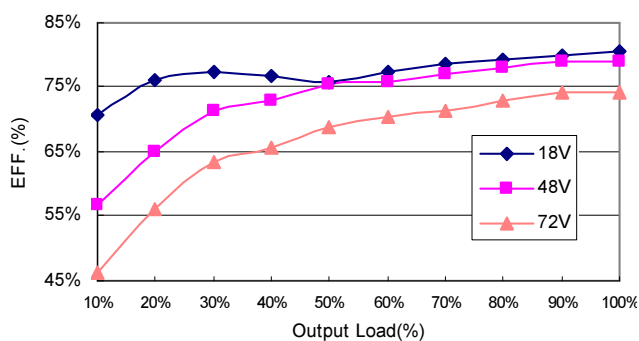
EC3AW07H Load VS EFF.



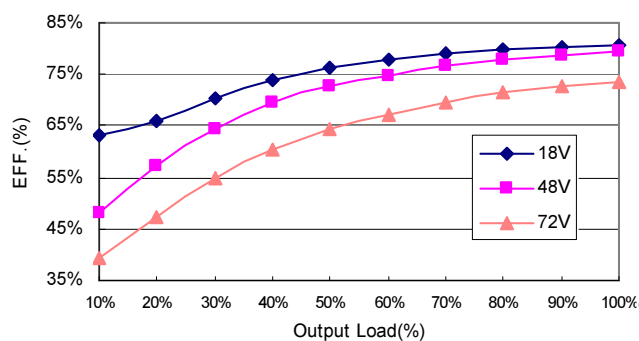
EC3AW12H Load VS EFF.



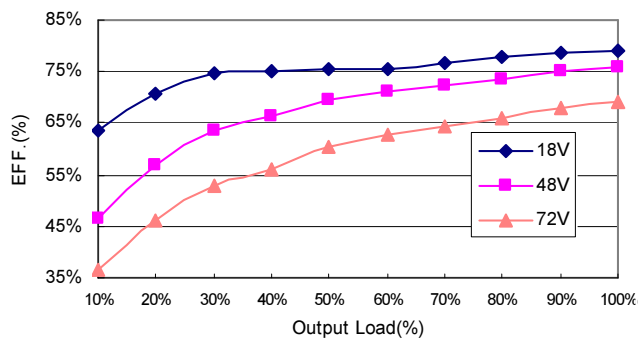
EC3AW13H Load VS EFF.



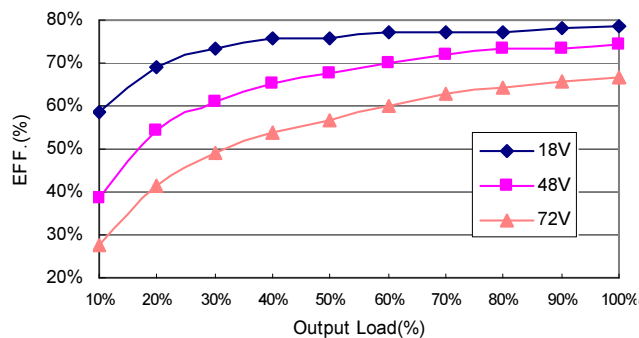
EC3AW14H Load VS EFF.



EC3AW15H Load VS EFF.



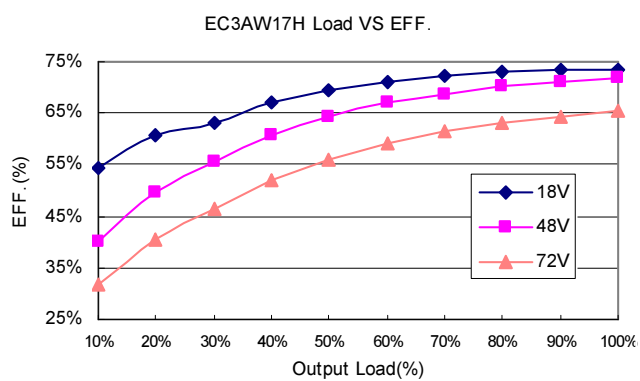
EC3AW16H Load VS EFF.





EC3AW 2-3W Isolated DC-DC Converters

Application Note V10 May 2015



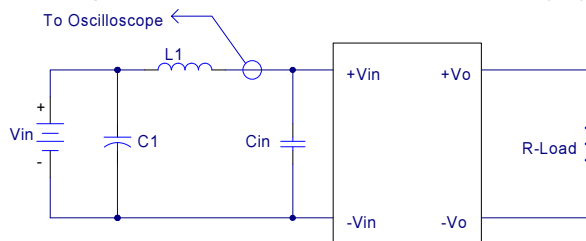


EC3AW 2-3W Isolated DC-DC Converters

Application Note V10 May 2015

6.5 Input Capacitance at the Power Module

The converters must be connected to low AC source impedance. To avoid problems with loop stability source inductance should be low. Also, the input capacitors (Cin) should be placed close to the converter input pins to de-couple distribution inductance. However, the external input capacitors are chosen for suitable ripple handling capability. Low ESR capacitors are good choice. Circuit as shown in Figure 4 represents typical measurement methods for reflected ripple current. C1 and L1 simulate a typical DC source impedance. The input reflected-ripple current is measured by current probe to oscilloscope with a simulated source Inductance (L1).



L1: 12uH.

C1: 220uF ESR <0.1Ω @ 20°C, 100KHz.

Cin: None

Figure 4 Input Reflected-Ripple Test Setup

6.6 Test Set-Up

The basic test set-up to measure parameters such as efficiency and load regulation is shown in Figure 5. When testing the modules under any transient conditions please ensure that the transient response of the source is sufficient to power the equipment under test. We can calculate the

- Efficiency
- Load regulation and line regulation.

The value of efficiency is defined as:

$$\eta = \frac{V_o \times I_o}{V_{in} \times I_{in}} \times 100\%$$

Where

V_o is output voltage,

I_o is output current,

V_{in} is input voltage,

I_{in} is input current.

The value of load regulation is defined as:

$$Load.reg = \frac{V_{FL} - V_{NL}}{V_{NL}} \times 100\%$$

Where

V_{FL} is the output voltage at full load

V_{NL} is the output voltage at 10% load (Single output)

V_{NL} is the output voltage at 25% load (Dual output)

The value of line regulation is defined as:

$$Line.reg = \frac{V_{HL} - V_{LL}}{V_{LL}} \times 100\%$$

Where

V_{HL} is the output voltage of maximum input voltage at full load.

V_{LL} is the output voltage of minimum input voltage at full load.

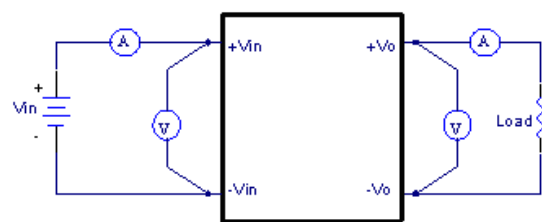
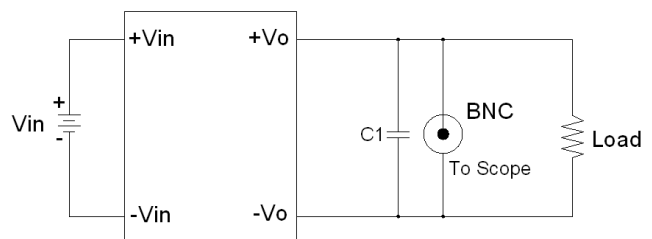


Figure 5 EC3AW Series Test Setup

6.7 Output Ripple and Noise Measurement

The test set-up for noise and ripple measurements is shown in Figure 6 and 7. A coaxial cable was used to prevent impedance mismatch reflections disturbing the noise readings at higher frequencies. Measurements are taken with output appropriately loaded and all ripple/noise specifications are from 5Hz to 20MHz Band Width.



Note: C1: 0.1uF Ceramic capacitor for SMD Models Only

Figure 6 Using BNC to Measure Output Ripple and Noise

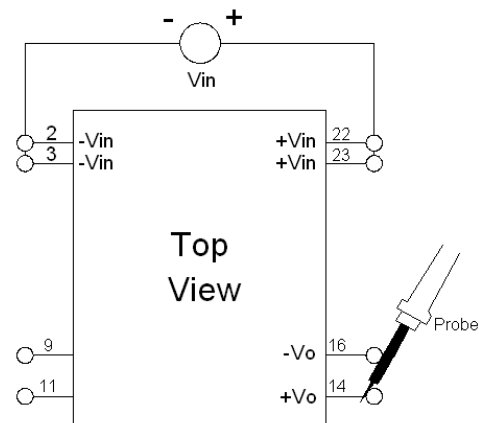


Figure 7 Using Probe to Measure Output Ripple and Noise



EC3AW 2-3W Isolated DC-DC Converters

Application Note V10 May 2015

6.8 Output Capacitance

The EC3AW series converters provide unconditional stability with or without external capacitors. For good transient response low ESR output capacitors should be located close to the point of load. These series converters are designed to work with load capacitance to see technical specifications.

7. Safety & EMC

7.1 Input Fusing and Safety Considerations.

The EC3AW series converters have not an internal fuse. However, to achieve maximum safety and system protection, always use an input line fuse. We recommended a active fast fuse 0.63A for 24Vin models and 0.3A for 48Vin models. Figure 8 circuit is recommended by a transient voltage suppressor diode across the input terminal to protect the unit against surge or spike voltage and input reverse voltage.

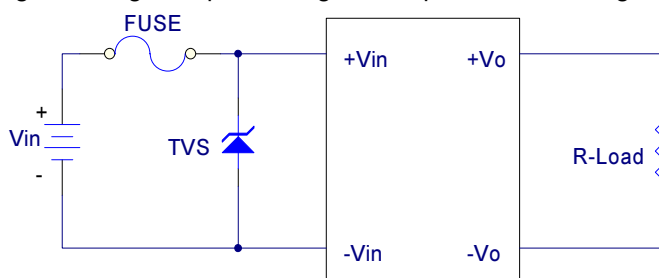


Figure 8 Input Protection

7.2 EMC Considerations

EMI Test standard: EN55022 Class A

Test Condition: Input Voltage: Nominal, Output Load: Full Load

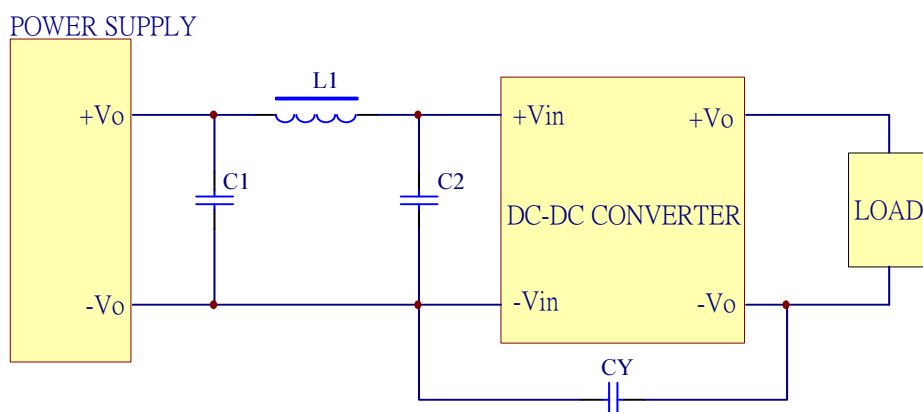


Figure 9 Connection circuit for conducted EMI testing



EC3AW 2-3W Isolated DC-DC Converters

Application Note V10 May 2015

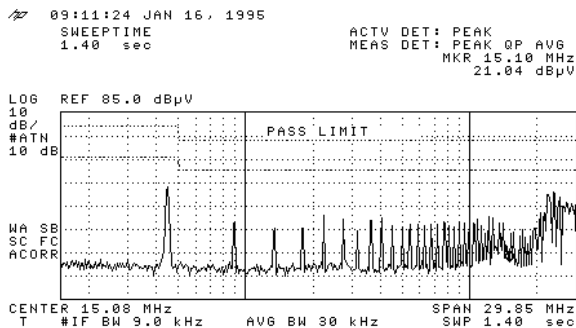
Model No.	EN55022 Class A			
	C1	C2	L1	CY
EC3AW01	NC	47uF/50V ESR<0.17Ω	Short	NC
EC3AW02	NC	47uF/50V ESR<0.17Ω	Short	NC
EC3AW03	NC	47uF/50V ESR<0.17Ω	Short	NC
EC3AW04	NC	47uF/50V ESR<0.17Ω	Short	NC
EC3AW05	NC	47uF/50V ESR<0.17Ω	Short	NC
EC3AW06	NC	47uF/50V ESR<0.17Ω	Short	NC
EC3AW07	NC	47uF/50V ESR<0.17Ω	Short	NC
EC3AW11	NC	47uF/100V ESR<0.17Ω	Short	NC
EC3AW12	NC	47uF/100V ESR<0.17Ω	Short	NC
EC3AW13	NC	47uF/100V ESR<0.17Ω	Short	NC
EC3AW14	NC	47uF/100V ESR<0.17Ω	Short	NC
EC3AW15	NC	47uF/100V ESR<0.17Ω	Short	NC
EC3AW16	NC	47uF/100V ESR<0.17Ω	Short	NC
EC3AW17	NC	47uF/100V ESR<0.17Ω	Short	NC

Note: The C2 is KY series aluminum capacitors.

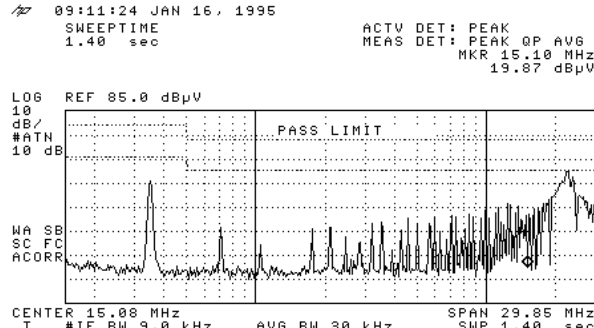


EC3AW 2-3W Isolated DC-DC Converters

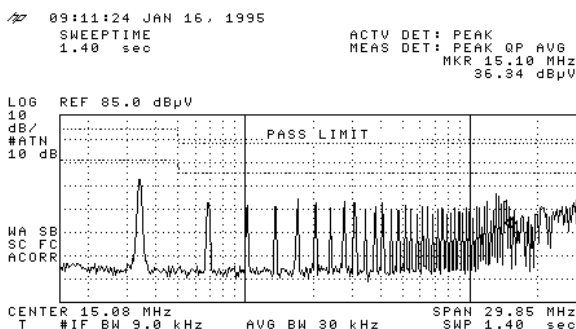
Application Note V10 May 2015



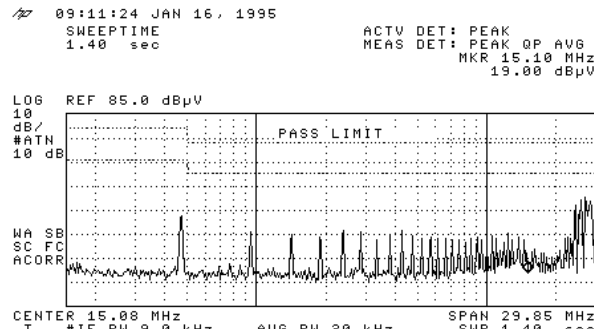
Conducted Class A of EC3AW01



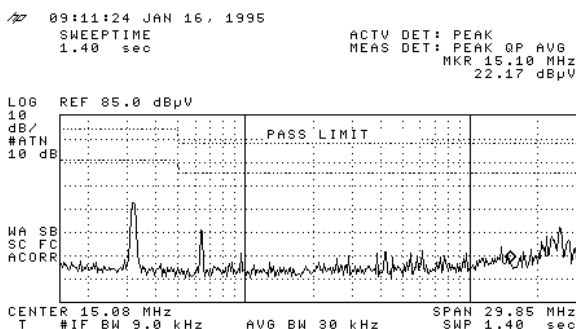
Conducted Class A EC3AW02



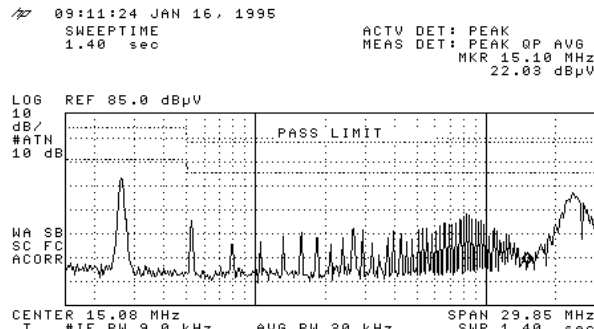
Conducted Class A EC3AW03



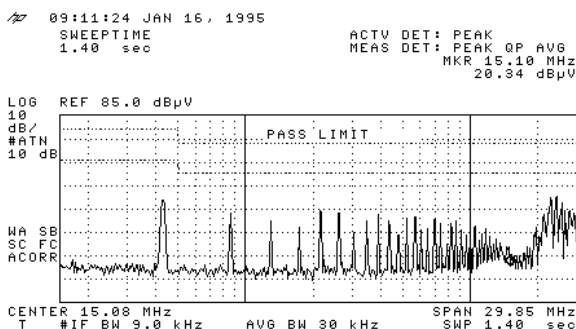
Conducted Class A EC3AW04



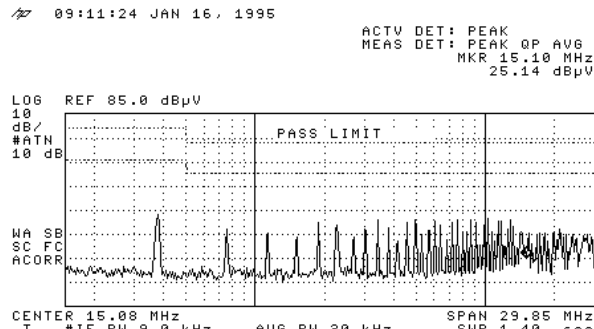
Conducted Class A EC3AW05



Conducted Class B EC3AW06



Conducted Class A EC3AW07



Conducted Class EC3AW11

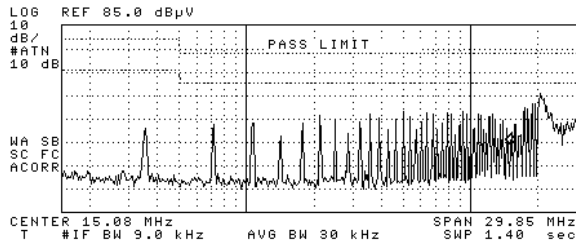


EC3AW 2-3W Isolated DC-DC Converters

Application Note V10 May 2015

09:11:24 JAN 16, 1995

ACTV DET: PEAK
MEAS DET: PEAK QP AVG
MKR 15.10 MHz
39.94 dBμV

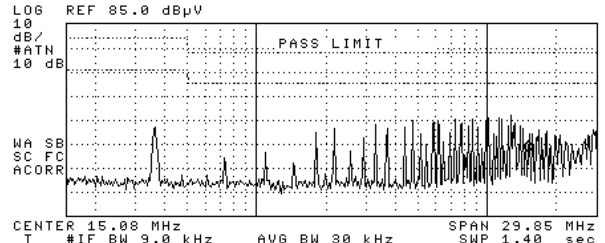


Conducted Class A of EC3AW12

09:11:24 JAN 16, 1995

SWEPTIME
1.40 sec

ACTV DET: PEAK
MEAS DET: PEAK QP AVG
MKR 15.10 MHz
31.77 dBμV

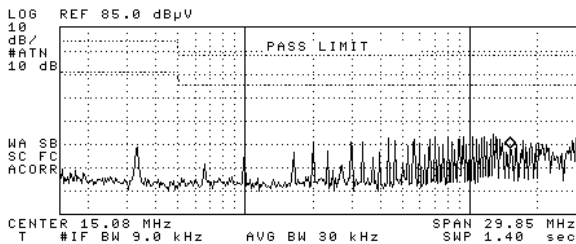


Conducted Class A of EC3AW13

09:11:24 JAN 16, 1995

SWEPTIME
1.40 sec

ACTV DET: PEAK
MEAS DET: PEAK QP AVG
MKR 15.10 MHz
32.57 dBμV

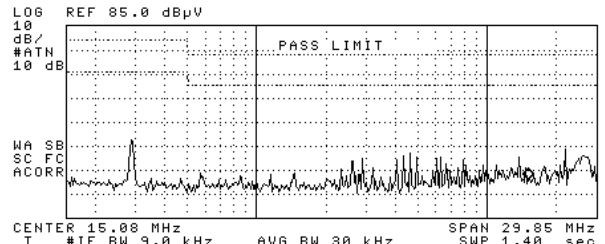


Conducted Class A of EC3AW14

09:11:24 JAN 16, 1995

SWEPTIME
1.40 sec

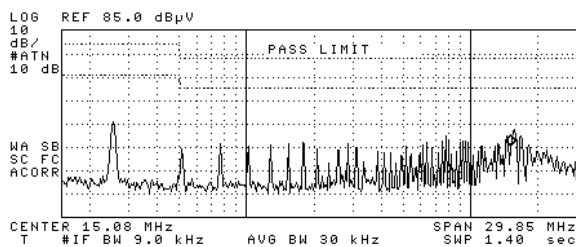
ACTV DET: PEAK
MEAS DET: PEAK QP AVG
MKR 15.10 MHz
20.92 dBμV



Conducted Class A of EC3AW15

09:11:24 JAN 16, 1995

ACTV DET: PEAK
MEAS DET: PEAK QP AVG
MKR 15.10 MHz
35.60 dBμV

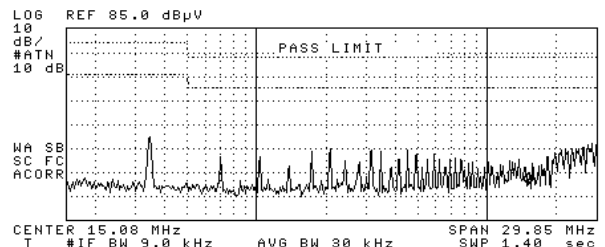


Conducted Class A of EC3AW16

09:11:24 JAN 16, 1995

SWEPTIME
1.40 sec

ACTV DET: PEAK
MEAS DET: PEAK QP AVG
MKR 15.10 MHz
19.95 dBμV



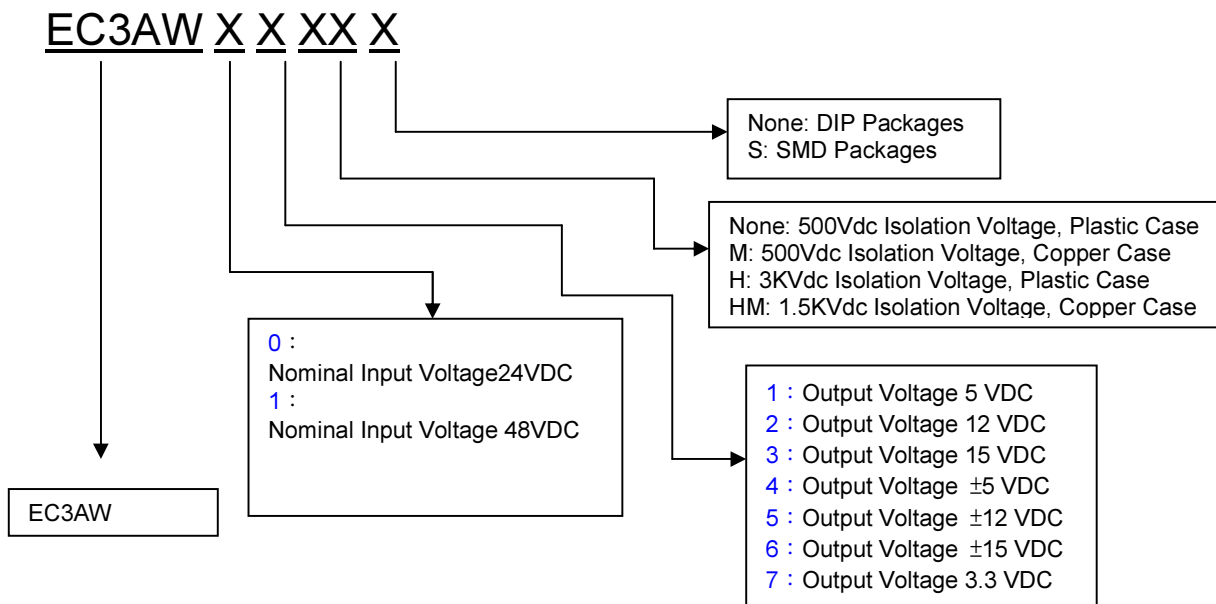
Conducted Class A of EC3AW17



EC3AW 2-3W Isolated DC-DC Converters

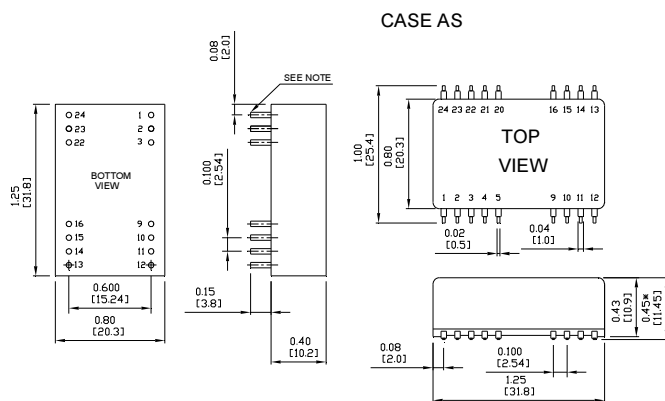
Application Note V10 May 2015

8. Part Number



9. Mechanical Specifications

NOTE: Pin Size is 0.02 \pm 0.002 Inch (0.5 \pm 0.05 mm) DIA
All Dimensions In Inches (mm)
Tolerances Inches: X.XX= \pm 0.02, X.XXX= \pm 0.010
Millimeters: X.X= \pm 0.5, X.XX= \pm 0.25



PIN CONNECTION							
500 VDC				1.5K & 3K VDC			
Pin	Single Output	Dual Output		Pin	Single Output	Dual Output	
	DIP	SMD			DIP	SMD	
1,24	+V Input	+V Input		1,24	NP	NC	NP
2,23	NC	-V Output		2,3	-V Input		-V Input
3,22	NC	Common		4,5	NP	NC	NP
4	NP	NC	NP	9	NC		Common
5	NP	NC	NP	10,15	NC		NC
9	NP	NC	NP	11	NC		-V Output
10,15	-V Output	Common		12,13	NP	NC	NP
11,14	+V Output	+V Output		14	+V Output		+V Output
12,13	-V Input	-V Input		16	-V Output		Common
16	NP	NC	NP	20,21	NP	NC	NP
20,21	NP	NC	NP	22,23	+V Input		+V Input

* NP-NO PIN
* NC-NO CONNECTION WITH PIN

CINCON ELECTRONICS CO., LTD.

Headquarter Office:

14F, No.306, Sec.4, Hsin Yi Rd.,
Taipei, Taiwan
Tel: 886-2-27086210
Fax: 886-2-27029852
E-mail: sales@cincon.com.tw
Web Site: <http://www.cincon.com>

Factory:

No. 8-1, Fu Kong Rd.,
Fu Hsing Industrial Park
Fu Hsing Hsiang, ChangHua Hsien,
Taiwan
Tel: 886-4-7690261
Fax: 886-4-7698031

Cincon American Office:

1655 Mesa Verde Ave, Ste 180,
Ventura, CA 93003
Tel: 805-639-3350
Fax: 805-639-4101
E-mail: info@cincon.com

Mouser Electronics

Authorized Distributor

Click to View Pricing, Inventory, Delivery & Lifecycle Information:

Cincon:

[EC3AW14](#) [EC3AW01](#) [EC3AW02](#) [EC3AW03](#) [EC3AW04](#) [EC3AW05](#) [EC3AW06](#) [EC3AW07](#) [EC3AW11](#) [EC3AW12](#)
[EC3AW13](#) [EC3AW15](#) [EC3AW16](#) [EC3AW17](#) [EC3AW02HM](#) [EC3AW04M](#) [EC3AW02M](#) [EC3AW14HM](#) [EC3AW02H](#)
[EC3AW17M](#) [EC3AW12M](#) [EC3AW06H](#) [EC3AW05HM](#) [EC3AW05H](#) [EC3AW11HM](#) [EC3AW03M](#) [EC3AW04H](#)
[EC3AW11M](#) [EC3AW03H](#) [EC3AW15H](#) [EC3AW04HM](#) [EC3AW13M](#) [EC3AW16M](#) [EC3AW01M](#) [EC3AW14H](#)
[EC3AW07M](#) [EC3AW17HM](#) [EC3AW07H](#) [EC3AW12HM](#) [EC3AW16H](#) [EC3AW13H](#) [EC3AW06HM](#) [EC3AW11H](#)
[EC3AW01HM](#) [EC3AW15HM](#) [EC3AW01H](#) [EC3AW17H](#) [EC3AW13HM](#) [EC3AW03HM](#) [EC3AW05M](#) [EC3AW07HM](#)
[EC3AW16HM](#) [EC3AW12H](#) [EC3AW06M](#) [EC3AW15M](#) [EC3AW14M](#) [EC3AW01HMS](#) [EC3AW01MS](#) [EC3AW02HMS](#)
[EC3AW02MS](#) [EC3AW03HMS](#) [EC3AW03MS](#) [EC3AW04HMS](#) [EC3AW04MS](#) [EC3AW05HMS](#) [EC3AW05MS](#)
[EC3AW06HMS](#) [EC3AW06MS](#) [EC3AW07HMS](#) [EC3AW07MS](#) [EC3AW11HMS](#) [EC3AW11MS](#) [EC3AW12HMS](#)
[EC3AW12MS](#) [EC3AW13HMS](#) [EC3AW13MS](#) [EC3AW14HMS](#) [EC3AW14MS](#) [EC3AW15HMS](#) [EC3AW15MS](#)
[EC3AW16HMS](#) [EC3AW16MS](#) [EC3AW17HMS](#) [EC3AW17MS](#) [EC3AW12-NRH](#)